

**DATASHEET**

**Collagen 11 alpha 2 Rabbit Polyclonal Antibody**

CAT. NO. APA09649

**KEY FEATURES**

Target	Collagen 11 alpha 2	Source / Host	Rabbit
Reactivity	Human, Dog, Monkey, Pig, Zebrafish	Clonality	Polyclonal
Applications	WB, IHC	Conjugation	Unconjugated
Form / Buffer	Liquid in 0.42% Potassium phosphate, 0.87% Sodium chloride, pH 7.3, 30% glycerol, and 0.01% sodium azide.	Storage	at-20°C

**BACKGROUND**

May play an important role in fibrillogenesis by controlling lateral growth of collagen II fibrils.

**APPLICATION**

To ensure optimal assay performance, AREX recommends conducting reagent titration tailored to each testing system for optimal detection results.

WB	1:500 - 1:1000
IHC	1:50 - 1:100

\*Results are sample-specific. Please refer to your local assay conditions and test parameters for reference.

**PRODUCT OVERVIEW**

Description	Rabbit polyclonal antibody to Collagen 11 alpha 2
Specificity	Recognizes endogenous levels of Collagen 11 alpha 2 protein.
Antibody Type	Primary antibody
Immunogen	KLH-conjugated synthetic peptide encompassing a sequence within the C-term region of human Collagen 11 alpha 2. The exact sequence is proprietary.
Purification	The antibody was purified by immunogen affinity chromatography.
Molecular Weight	Predicted: 171 kD; Observed: 172 kD
Form/Buffer	Liquid in 0.42% Potassium phosphate, 0.87% Sodium chloride, pH 7.3, 30% glycerol, and 0.01% sodium azide.
Alternative Names	Collagen alpha-2(XI) chain
Gene Symbol	COL11A2
Entrez Gene	1302(Human)
SwissProt	P13942(Human)

\*AREX continuously optimizes our products. Webpage content may not reflect the latest updates. For inquiries, please contact [info@arexbio.com](mailto:info@arexbio.com) or your local distributor.

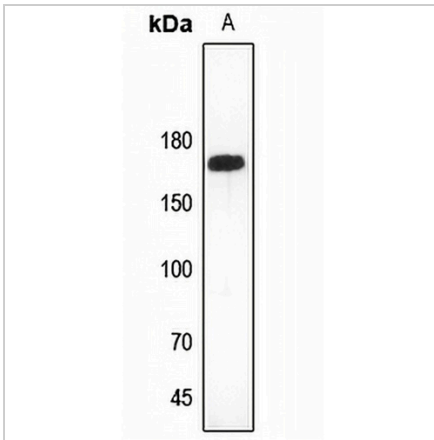
\*Clone Number, Reactivity, Source/Host and Clonality can be found in the product name and Key Features section above.

**DATASHEET**

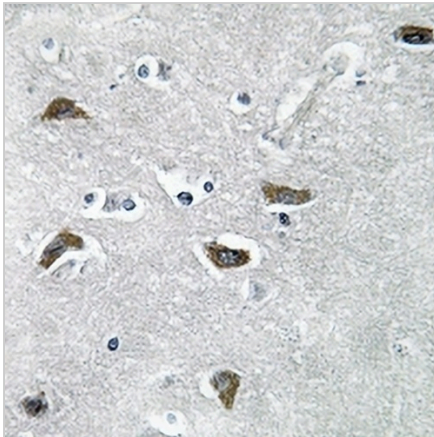
**Collagen 11 alpha 2 Rabbit Polyclonal Antibody**

CAT. NO. APA09649

**DATA**



Western blot analysis of Collagen 11 alpha 2 expression in zebrafish (A) whole cell lysates. (Predicted band size: 171 kD; Observed band size: 172 kD)



Immunohistochemical analysis of Collagen 11 alpha 2 staining in human brain formalin fixed paraffin embedded tissue section. The section was pre-treated using heat mediated antigen retrieval with sodium citrate buffer (pH 6.0). The section was then incubated with the antibody at room temperature and detected using an HRP conjugated compact polymer system. DAB was used as the chromogen. The section was then counterstained with haematoxylin and mounted with DPX.

**STORAGE**

Store at 4°C short term. For long term storage, store at -20°C, avoiding freeze/thaw cycles.

**NOTE**

For Research Use Only. Not for diagnostic, therapeutics, prophylactic or in vivo use.