

**DATASHEET**

**Cytochrome c1 Rabbit Polyclonal Antibody**

CAT. NO. APA09654

**KEY FEATURES**

Target	Cytochrome c1	Source / Host	Rabbit
Reactivity	Human, Bovine	Clonality	Polyclonal
Applications	WB	Conjugation	Unconjugated
Form / Buffer	Liquid in 0.42% Potassium phosphate, 0.87% Sodium chloride, pH 7.3, 30% glycerol, and 0.01% sodium azide.		Storage at -20°C

**BACKGROUND**

Component of the ubiquinol-cytochrome c oxidoreductase, a multisubunit transmembrane complex that is part of the mitochondrial electron transport chain which drives oxidative phosphorylation. The respiratory chain contains 3 multisubunit complexes succinate dehydrogenase (complex II, CII), ubiquinol-cytochrome c oxidoreductase (cytochrome b-c1 complex, complex III, CIII) and cytochrome c oxidase (complex IV, CIV), that cooperate to transfer electrons derived from NADH and succinate to molecular oxygen, creating an electrochemical gradient over the inner membrane that drives transmembrane transport and the ATP synthase.

**APPLICATION**

To ensure optimal assay performance, AREX recommends conducting reagent titration tailored to each testing system for optimal detection results.

WB	1:500 - 1:1000
----	----------------

\*Results are sample-specific. Please refer to your local assay conditions and test parameters for reference.

**PRODUCT OVERVIEW**

Description	Rabbit polyclonal antibody to Cytochrome c1
Specificity	Recognizes endogenous levels of Cytochrome c1 protein.
Antibody Type	Primary antibody
Immunogen	KLH-conjugated synthetic peptide encompassing a sequence within the center region of human Cytochrome c1. The exact sequence is proprietary.
Purification	The antibody was purified by immunogen affinity chromatography.
Molecular Weight	Predicted: 35 kD; Observed: 35 kD
Form/Buffer	Liquid in 0.42% Potassium phosphate, 0.87% Sodium chloride, pH 7.3, 30% glycerol, and 0.01% sodium azide.
Alternative Names	Cytochrome c1, heme protein mitochondrial; Complex III subunit 4; Complex III subunit IV; Cytochrome b-c1 complex subunit 4; Ubiquinol-cytochrome-c reductase complex cytochrome c1 subunit; Cytochrome c-1
Gene Symbol	CYC1
Entrez Gene	1537(Human)
SwissProt	P08574(Human)

\*AREX continuously optimizes our products. Webpage content may not reflect the latest updates. For inquiries, please contact [info@arexbio.com](mailto:info@arexbio.com) or your local distributor.

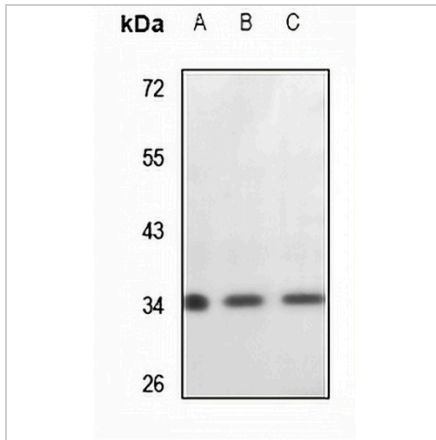
\*Clone Number, Reactivity, Source/Host and Clonality can be found in the product name and Key Features section above.

**DATASHEET**

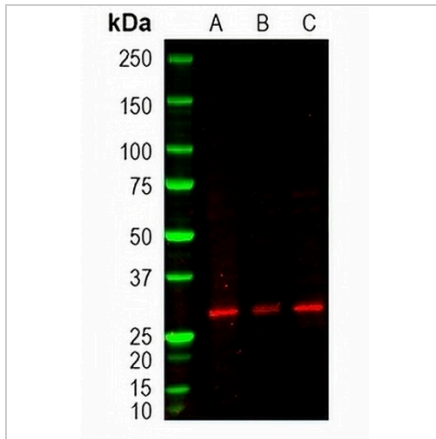
**Cytochrome c1 Rabbit Polyclonal Antibody**

CAT. NO. APA09654

**DATA**



Western blot analysis of Cytochrome c1 expression in LO2 (A), A549 (B), MCF7 (C) whole cell lysates. (Predicted band size: 35 kD; Observed band size: 35 kD)



Western blot analysis of Cytochrome c1 expression in K562 (A), A375 (B), HT29 (C) whole cell lysates. (Predicted band size: 35 kD; Observed band size: 27 kD)

**STORAGE**

Store at 4°C short term. For long term storage, store at -20°C, avoiding freeze/thaw cycles.

**NOTE**

For Research Use Only. Not for diagnostic, therapeutics, prophylactic or in vivo use.