

DATASHEET

EEF2K Rabbit Polyclonal Antibody

CAT. NO. APA09663

KEY FEATURES

Target	EEF2K	Source / Host	Rabbit
Reactivity	Human, Rat, Monkey	Clonality	Polyclonal
Applications	WB, IHC	Conjugation	Unconjugated
Form / Buffer	Liquid in 0.42% Potassium phosphate, 0.87% Sodium chloride, pH 7.3, 30% glycerol, and 0.01% sodium azide.		Storage at-20°C

BACKGROUND

Threonine kinase that regulates protein synthesis by controlling the rate of peptide chain elongation. Upon activation by a variety of upstream kinases including AMPK or TRPM7, phosphorylates the elongation factor EEF2 at a single site, renders it unable to bind ribosomes and thus inactive. In turn, the rate of protein synthesis is reduced.

APPLICATION

To ensure optimal assay performance, AREX recommends conducting reagent titration tailored to each testing system for optimal detection results.

WB	1:500 - 1:1000
IHC	1:100 - 1:200

*Results are sample-specific. Please refer to your local assay conditions and test parameters for reference.

PRODUCT OVERVIEW

Description	Rabbit polyclonal antibody to EEF2K
Specificity	Recognizes endogenous levels of EEF2K protein.
Antibody Type	Primary antibody
Immunogen	KLH-conjugated synthetic peptide encompassing a sequence within the center region of human EEF2K. The exact sequence is proprietary.
Purification	The antibody was purified by immunogen affinity chromatography.
Molecular Weight	Predicted: 82 kD; Observed: 105 kD
Form/Buffer	Liquid in 0.42% Potassium phosphate, 0.87% Sodium chloride, pH 7.3, 30% glycerol, and 0.01% sodium azide.
Alternative Names	Eukaryotic elongation factor 2 kinase; eEF-2 kinase; eEF-2K; Calcium/calmodulin-dependent eukaryotic elongation factor 2 kinase
Gene Symbol	EEF2K
Entrez Gene	101930123; 29904(Human); 13631(Mouse); 25435(Rat)
SwissProt	O00418(Human); O08796(Mouse); P70531(Rat)

*AREX continuously optimizes our products. Webpage content may not reflect the latest updates. For inquiries, please contact info@arexbio.com or your local distributor.

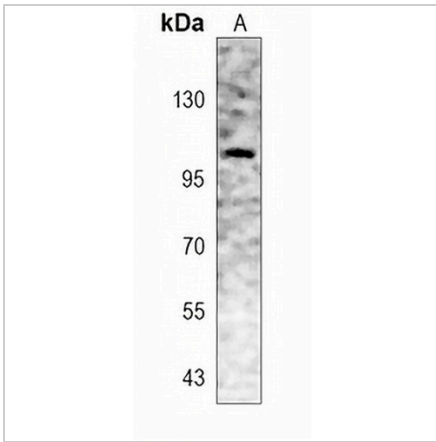
*Clone Number, Reactivity, Source/Host and Clonality can be found in the product name and Key Features section above.

DATASHEET

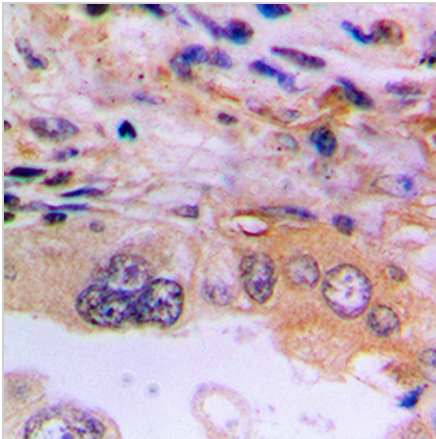
EEF2K Rabbit Polyclonal Antibody

CAT. NO. APA09663

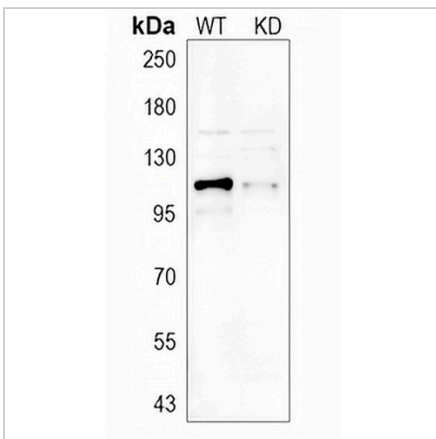
DATA



Western blot analysis of EEF2K expression in MCF7 (A) whole cell lysates. (Predicted band size: 82 kD; Observed band size: 105 kD)



Immunohistochemical analysis of EEF2K staining in human lung cancer formalin fixed paraffin embedded tissue section. The section was pre-treated using heat mediated antigen retrieval with sodium citrate buffer (pH 6.0). The section was then incubated with the antibody at room temperature and detected using an HRP conjugated compact polymer system. DAB was used as the chromogen. The section was then counterstained with haematoxylin and mounted with DPX.



Western blot analysis of EEF2K expression in wild type (WT) and knockdown (KD) HeLa cell lysates.

STORAGE

Store at 4°C short term. For long term storage, store at -20°C, avoiding freeze/thaw cycles.

NOTE

For Research Use Only. Not for diagnostic, therapeutics, prophylactic or in vivo use.