

DATASHEET

Ephrin B1/2 Rabbit Polyclonal Antibody

CAT. NO. APA09664

KEY FEATURES

Target	Ephrin B1/2	Source / Host	Rabbit
Reactivity	Human, Mouse, Rat, Chicken, Zebrafish	Clonality	Polyclonal
Applications	WB, IHC	Conjugation	Unconjugated
Form / Buffer	Liquid in 0.42% Potassium phosphate, 0.87% Sodium chloride, pH 7.3, 30% glycerol, and 0.01% sodium azide.		Storage at -20°C

BACKGROUND

Cell surface transmembrane ligand for Eph receptors, a family of receptor tyrosine kinases which are crucial for migration, repulsion and adhesion during neuronal, vascular and epithelial development . Binding to Eph receptors residing on adjacent cells leads to contact-dependent bidirectional signaling into neighboring cells . Shows high affinity for the receptor tyrosine kinase EPHB1/ELK . Can also bind EPHB2 and EPHB3 . Binds to, and induces collapse of, commissural axons/growth cones in vitro . May play a role in constraining the orientation of longitudinally projecting axons .

APPLICATION

To ensure optimal assay performance, AREX recommends conducting reagent titration tailored to each testing system for optimal detection results.

WB	1:500 - 1:1000
IHC	1:50 - 1:100

*Results are sample-specific. Please refer to your local assay conditions and test parameters for reference.

PRODUCT OVERVIEW

Description	Rabbit polyclonal antibody to Ephrin B1/2
Specificity	Recognizes endogenous levels of Ephrin B1/2 protein.
Antibody Type	Primary antibody
Immunogen	KLH-conjugated synthetic peptide encompassing a sequence within the C-term region of human Ephrin B1/2. The exact sequence is proprietary.
Purification	The antibody was purified by immunogen affinity chromatography.
Molecular Weight	Predicted: 38; Observed: 60; 45 kD
Form/Buffer	Liquid in 0.42% Potassium phosphate, 0.87% Sodium chloride, pH 7.3, 30% glycerol, and 0.01% sodium azide.
Alternative Names	EFNB1; EFL3; EPLG2; LERK2; Ephrin-B1; EFL-3; ELK ligand; ELK-L; EPH-related receptor tyrosine kinase ligand 2; LERK-2; EFNB2; EPLG5; HTKL; LERK5; Ephrin-B2; EPH-related receptor tyrosine kinase ligand 5; LERK-5; HTK ligand; HTK-L
Gene Symbol	EFNB1; EFNB2
Entrez Gene	1947; 1948(Human); 13641; 13642(Mouse)
SwissProt	P98172; P52799(Human); P52795; P52800(Mouse); P52796(Rat)

*AREX continuously optimizes our products. Webpage content may not reflect the latest updates. For inquiries, please contact info@arexbio.com or your local distributor.

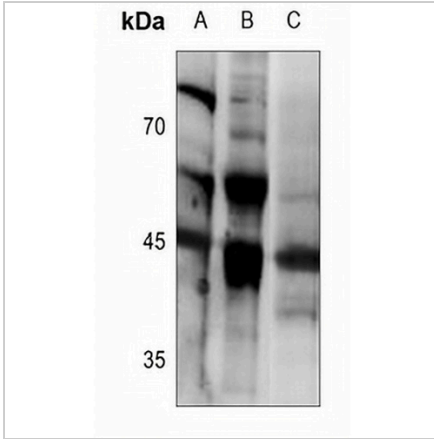
*Clone Number, Reactivity, Source/Host and Clonality can be found in the product name and Key Features section above.

DATASHEET

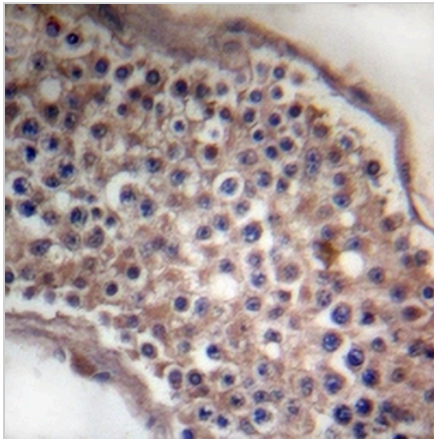
Ephrin B1/2 Rabbit Polyclonal Antibody

CAT. NO. APA09664

DATA



Western blot analysis of Ephrin B1/2 expression in mouse heart (A), rat brain (B), U87MG (C) whole cell lysates. (Predicted band size: 38; 36 kD; Observed band size: 60; 45 kD)



Immunohistochemical analysis of Ephrin B1/2 staining in human testis formalin fixed paraffin embedded tissue section. The section was pre-treated using heat mediated antigen retrieval with sodium citrate buffer (pH 6.0). The section was then incubated with the antibody at room temperature and detected using an HRP conjugated compact polymer system. DAB was used as the chromogen. The section was then counterstained with haematoxylin and mounted with DPX.

STORAGE

Store at 4°C short term. For long term storage, store at -20°C, avoiding freeze/thaw cycles.

NOTE

For Research Use Only. Not for diagnostic, therapeutics, prophylactic or in vivo use.