

DATASHEET

EPN3 Rabbit Polyclonal Antibody

CAT. NO. APA09673

KEY FEATURES

Target	EPN3	Source / Host	Rabbit
Reactivity	Human, Mouse, Rat	Clonality	Polyclonal
Applications	WB, IHC	Conjugation	Unconjugated
Form / Buffer	Liquid in 0.42% Potassium phosphate, 0.87% Sodium chloride, pH 7.3, 30% glycerol, and 0.01% sodium azide.		Storage at-20°C

BACKGROUND

Epsin-3 (EPN3), also known as EPS-15-interacting protein 3. Belongs to the epsin family Subcellular location: Cytoplasm; Cytoplasm, perinuclear region; Cytoplasmic vesicle, clathrin-coated vesicle; Nucleus Tissue specificity: Detected in migrating keratinocytes from wounded skin, but not in differentiating keratinocytes or in normal skin. Detected in chronic wounds, basal cell carcinoma and ulcerative colitis Induction: In keratinocytes, by wounding or contact with collagen

APPLICATION

To ensure optimal assay performance, AREX recommends conducting reagent titration tailored to each testing system for optimal detection results.

WB	1:500 - 1:1000
IHC	1:100 - 1:200

*Results are sample-specific. Please refer to your local assay conditions and test parameters for reference.

PRODUCT OVERVIEW

Description	Rabbit polyclonal antibody to EPN3
Specificity	Recognizes endogenous levels of EPN3 protein.
Antibody Type	Primary antibody
Immunogen	KLH-conjugated synthetic peptide encompassing a sequence within the center region of human EPN3. The exact sequence is proprietary.
Purification	The antibody was purified by immunogen affinity chromatography.
Molecular Weight	Predicted: 68 kD; Observed: 55 kD
Form/Buffer	Liquid in 0.42% Potassium phosphate, 0.87% Sodium chloride, pH 7.3, 30% glycerol, and 0.01% sodium azide.
Alternative Names	Epsin-3; EPS-15-interacting protein 3
Gene Symbol	EPN3
Entrez Gene	55040(Human)
SwissProt	Q9H201(Human)

*AREX continuously optimizes our products. Webpage content may not reflect the latest updates. For inquiries, please contact info@arexbio.com or your local distributor.

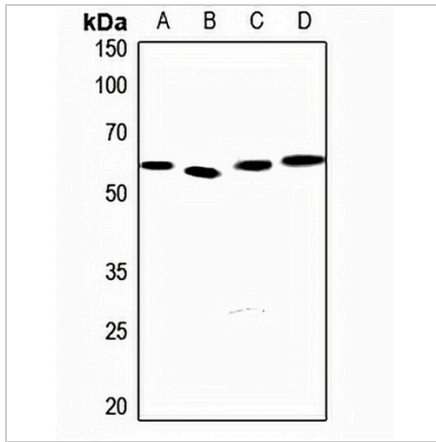
*Clone Number, Reactivity, Source/Host and Clonality can be found in the product name and Key Features section above.

DATASHEET

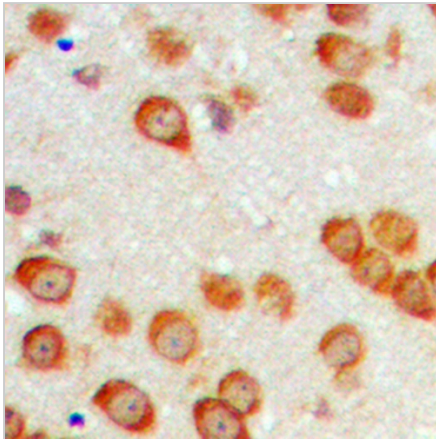
EPN3 Rabbit Polyclonal Antibody

CAT. NO. APA09673

DATA



Western blot analysis of EPN3 expression in HEK293T (A), H446 (B), mouse testis (C), rat testis (D) whole cell lysates. (Predicted band size: 68 kDa; Observed band size: 55 kDa)



Immunohistochemical analysis of EPN3 staining in human brain formalin fixed paraffin embedded tissue section. The section was pre-treated using heat mediated antigen retrieval with sodium citrate buffer (pH 6.0). The section was then incubated with the antibody at room temperature and detected using an HRP conjugated compact polymer system. DAB was used as the chromogen. The section was then counterstained with haematoxylin and mounted with DPX.

STORAGE

Store at 4°C short term. For long term storage, store at -20°C, avoiding freeze/thaw cycles.

NOTE

For Research Use Only. Not for diagnostic, therapeutics, prophylactic or in vivo use.