

DATASHEET

ALS2CR13 Rabbit Polyclonal Antibody

CAT. NO. APA09677

KEY FEATURES

Target	ALS2CR13	Source / Host	Rabbit
Reactivity	Human, Mouse, Rat	Clonality	Polyclonal
Applications	WB	Conjugation	Unconjugated
Form / Buffer	Liquid in 0.42% Potassium phosphate, 0.87% Sodium chloride, pH 7.3, 30% glycerol, and 0.01% sodium azide.		Storage at -20°C

BACKGROUND

family with sequence similarity 117 member B. Also known as: protein FAM117B; amyotrophic lateral sclerosis 2 (juvenile) chromosome region, candidate 13; amyotrophic lateral sclerosis 2 chromosomal region candidate gene 13 protein.

APPLICATION

To ensure optimal assay performance, AREX recommends conducting reagent titration tailored to each testing system for optimal detection results.

WB	1:500 - 1:1000
----	----------------

*Results are sample-specific. Please refer to your local assay conditions and test parameters for reference.

PRODUCT OVERVIEW

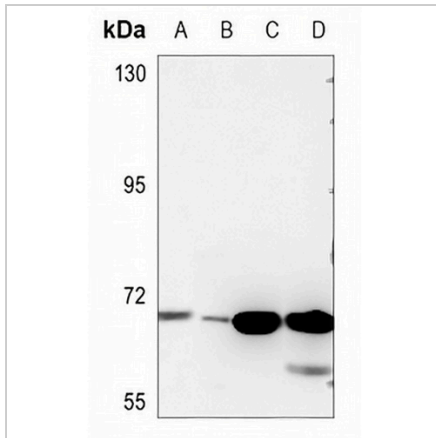
Description	Rabbit polyclonal antibody to ALS2CR13
Specificity	Recognizes endogenous levels of ALS2CR13 protein.
Antibody Type	Primary antibody
Immunogen	KLH-conjugated synthetic peptide encompassing a sequence within the C-term region of human ALS2CR13. The exact sequence is proprietary.
Purification	The antibody was purified by immunogen affinity chromatography.
Molecular Weight	Predicted: 61 kD; Observed: 60 kD
Form/Buffer	Liquid in 0.42% Potassium phosphate, 0.87% Sodium chloride, pH 7.3, 30% glycerol, and 0.01% sodium azide.
Alternative Names	ALS2CR13; Protein FAM117B; Amyotrophic lateral sclerosis 2 chromosomal region candidate gene 13 protein
Gene Symbol	FAM117B
Entrez Gene	150864(Human); 72750(Mouse)
SwissProt	Q6P1L5(Human); Q3U3E2(Mouse)

*AREX continuously optimizes our products. Webpage content may not reflect the latest updates. For inquiries, please contact info@arexbio.com or your local distributor.

*Clone Number, Reactivity, Source/Host and Clonality can be found in the product name and Key Features section above.

DATASHEET**ALS2CR13 Rabbit Polyclonal Antibody**

CAT. NO. APA09677

DATA

Western blot analysis of ALS2CR13 expression in A549 (A), mouse muscle (B), mouse kidney (C), rat muscle (D) whole cell lysates. (Predicted band size: 61 kD; Observed band size: 60 kD)

STORAGE

Store at 4°C short term. For long term storage, store at -20°C, avoiding freeze/thaw cycles.

NOTE

For Research Use Only. Not for diagnostic, therapeutics, prophylactic or in vivo use.