

DATASHEET

FTH1 Rabbit Polyclonal Antibody

CAT. NO. APA09681

KEY FEATURES

Target	FTH1	Source / Host	Rabbit
Reactivity	Human, Mouse, Rat, Dog, Monkey, Rabbit	Clonality	Polyclonal
Applications	WB, IF/ICC	Conjugation	Unconjugated
Form / Buffer	Liquid in 0.42% Potassium phosphate, 0.87% Sodium chloride, pH 7.3, 30% glycerol, and 0.01% sodium azide.		Storage at -20°C

BACKGROUND

Stores iron in a soluble, non-toxic, readily available form. Important for iron homeostasis. Has ferroxidase activity . Iron is taken up in the ferrous form and deposited as ferric hydroxides after oxidation . Also plays a role in delivery of iron to cells . Mediates iron uptake in capsule cells of the developing kidney . Delivery to lysosomes is mediated by the cargo receptor NCOA4 for autophagic degradation and release of iron .

APPLICATION

To ensure optimal assay performance, AREX recommends conducting reagent titration tailored to each testing system for optimal detection results.

WB	1:500 - 1:1000
IF/ICC	1:50 - 1:200

*Results are sample-specific. Please refer to your local assay conditions and test parameters for reference.

PRODUCT OVERVIEW

Description	Rabbit polyclonal antibody to FTH1
Specificity	Recognizes endogenous levels of FTH1 protein.
Antibody Type	Primary antibody
Immunogen	KLH-conjugated synthetic peptide encompassing a sequence within the center region of human FTH1. The exact sequence is proprietary.
Purification	The antibody was purified by immunogen affinity chromatography.
Molecular Weight	Predicted: 21 kD; Observed: 21 kD
Form/Buffer	Liquid in 0.42% Potassium phosphate, 0.87% Sodium chloride, pH 7.3, 30% glycerol, and 0.01% sodium azide.
Alternative Names	FTH; FTHL6; Ferritin heavy chain; Ferritin H subunit; Cell proliferation-inducing gene 15 protein
Gene Symbol	FTH1
Entrez Gene	2495(Human); 14319(Mouse); 25319(Rat)
SwissProt	P02794(Human); P09528(Mouse); P19132(Rat)

*AREX continuously optimizes our products. Webpage content may not reflect the latest updates. For inquiries, please contact info@arexbio.com or your local distributor.

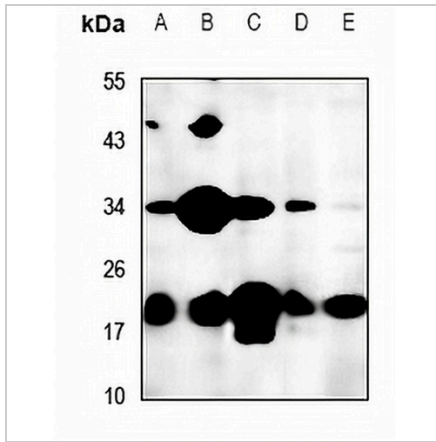
*Clone Number, Reactivity, Source/Host and Clonality can be found in the product name and Key Features section above.

DATASHEET

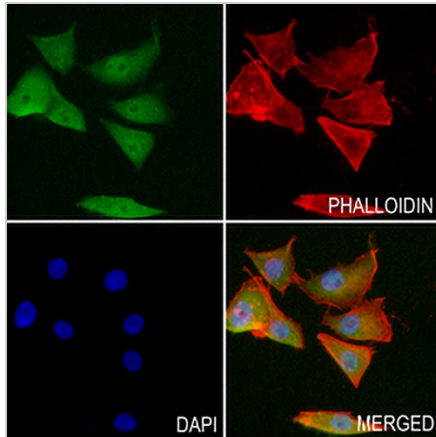
FTH1 Rabbit Polyclonal Antibody

CAT. NO. APA09681

DATA



Western blot analysis of FTH1 expression in LO2 (A), C6 (B), MEF (C), U87MG (D), HepG2 (E) whole cell lysates. (Predicted band size: 21 kD; Observed band size: 21 kD)



Immunofluorescent analysis of FTH1 staining in MG63 cells. Formalin-fixed cells were permeabilized with 0.1% Triton X-100 in TBS for 5-10 minutes and blocked with 3% BSA-PBS for 30 minutes at room temperature. Cells were probed with the primary antibody in 3% BSA-PBS and incubated overnight at 4 °C in a humidified chamber. Cells were washed with PBST and incubated with a AREX® Fluor 488 -conjugated secondary antibody (green) in PBS at room temperature in the dark. Phalloidin - AREX® Fluor 594 was used to stain Actin filaments (red). DAPI was used to stain the cell nuclei (blue).

STORAGE

Store at 4°C short term. For long term storage, store at -20°C, avoiding freeze/thaw cycles.

NOTE

For Research Use Only. Not for diagnostic, therapeutics, prophylactic or in vivo use.