

**DATASHEET**

**GRB2 Rabbit Polyclonal Antibody**

CAT. NO. APA09691

**KEY FEATURES**

Target	GRB2	Source / Host	Rabbit
Reactivity	Human, Mouse, Rat, Bovine, Monkey, Pig, Zebrafish	Clonality	Polyclonal
Applications	WB	Conjugation	Unconjugated
Form / Buffer	Liquid in 0.42% Potassium phosphate, 0.87% Sodium chloride, pH 7.3, 30% glycerol, and 0.01% sodium azide.		Storage at-20°C

**BACKGROUND**

Non-enzymatic adapter protein that plays a pivotal role in precisely regulated signaling cascades from cell surface receptors to cellular responses, including signaling transduction and gene expression . Thus, participates in many biological processes including regulation of innate and adaptive immunity, autophagy, DNA repair or necroptosis . Controls signaling complexes at the T-cell antigen receptor to facilitate the activation, differentiation, and function of T-cells . Mechanistically, engagement of the TCR leads to phosphorylation of the adapter protein LAT, which serves as docking site for GRB2 .

**APPLICATION**

To ensure optimal assay performance, AREX recommends conducting reagent titration tailored to each testing system for optimal detection results.

WB	1:500 - 1:1000
----	----------------

\*Results are sample-specific. Please refer to your local assay conditions and test parameters for reference.

**PRODUCT OVERVIEW**

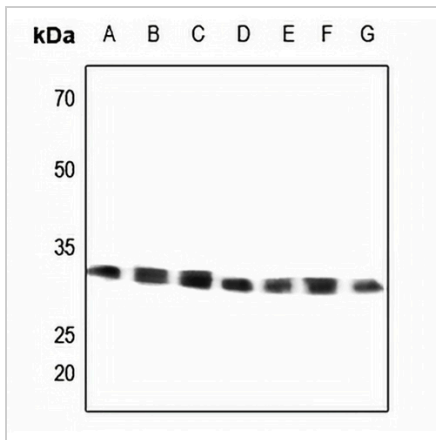
Description	Rabbit polyclonal antibody to GRB2
Specificity	Recognizes endogenous levels of GRB2 protein.
Antibody Type	Primary antibody
Immunogen	KLH-conjugated synthetic peptide encompassing a sequence within the center region of human GRB2. The exact sequence is proprietary.
Purification	The antibody was purified by immunogen affinity chromatography.
Molecular Weight	Predicted: 25 kD; Observed: 25-31 kD
Form/Buffer	Liquid in 0.42% Potassium phosphate, 0.87% Sodium chloride, pH 7.3, 30% glycerol, and 0.01% sodium azide.
Alternative Names	ASH; Growth factor receptor-bound protein 2; Adapter protein GRB2; Protein Ash; SH2/SH3 adapter GRB2
Gene Symbol	GRB2
Entrez Gene	2885(Human); 14784(Mouse); 81504(Rat)
SwissProt	P62993(Human); Q60631(Mouse); P62994(Rat)

\*AREX continuously optimizes our products. Webpage content may not reflect the latest updates. For inquiries, please contact [info@arexbio.com](mailto:info@arexbio.com) or your local distributor.

\*Clone Number, Reactivity, Source/Host and Clonality can be found in the product name and Key Features section above.

**DATASHEET****GRB2 Rabbit Polyclonal Antibody**

CAT. NO. APA09691

**DATA**

Western blot analysis of GRB2 expression in HEK293T (A), HeLa (B), H1688 (C), mouse lung (D), mouse muscle (E), rat lung (F), rat muscle (G) whole cell lysates. (Predicted band size: 25 kD; Observed band size: 25-31 kD)

**STORAGE**

Store at 4°C short term. For long term storage, store at -20°C, avoiding freeze/thaw cycles.

**NOTE**

For Research Use Only. Not for diagnostic, therapeutics, prophylactic or in vivo use.