

## DATASHEET

# KDEL2 Rabbit Polyclonal Antibody

CAT. NO. APA09715

### KEY FEATURES

Target	KDEL2	Source / Host	Rabbit
Reactivity	Human, Mouse, Rat, Bovine, Chicken, Pig, Sheep, Zebrafish	Clonality	Polyclonal
Applications	WB, IHC, IF/ICC	Conjugation	Unconjugated
Form / Buffer	Liquid in 0.42% Potassium phosphate, 0.87% Sodium chloride, pH 7.3, 30% glycerol, and 0.01% sodium azide.		Storage at -20°C

### BACKGROUND

Membrane receptor that binds the K-D-E-L sequence motif in the C-terminal part of endoplasmic reticulum resident proteins and maintains their localization in that compartment by participating to their vesicle-mediated recycling back from the Golgi. Binding is pH dependent, and is optimal at pH 5-5.4.

### APPLICATION

To ensure optimal assay performance, AREX recommends conducting reagent titration tailored to each testing system for optimal detection results.

WB	1:500 - 1:1000
IHC	1:100 - 1:200
IF/ICC	1:100 - 1:500

\*Results are sample-specific. Please refer to your local assay conditions and test parameters for reference.

### PRODUCT OVERVIEW

Description	Rabbit polyclonal antibody to KDEL2
Specificity	Recognizes endogenous levels of KDEL2 protein.
Antibody Type	Primary antibody
Immunogen	KLH-conjugated synthetic peptide encompassing a sequence within the center region of human KDEL2. The exact sequence is proprietary.
Purification	The antibody was purified by immunogen affinity chromatography.
Molecular Weight	Predicted: 24 kD; Observed: 24 kD
Form/Buffer	Liquid in 0.42% Potassium phosphate, 0.87% Sodium chloride, pH 7.3, 30% glycerol, and 0.01% sodium azide.
Alternative Names	ERD2.2; ER lumen protein retaining receptor 2; ERD2-like protein 1; ELP-1; KDEL endoplasmic reticulum protein retention receptor 2; KDEL receptor 2
Gene Symbol	KDEL2
Entrez Gene	11014(Human); 66913(Mouse); 304290(Rat)
SwissProt	P33947(Human); Q9CQM2(Mouse); Q5U305(Rat)

\*AREX continuously optimizes our products. Webpage content may not reflect the latest updates. For inquiries, please contact [info@arexbio.com](mailto:info@arexbio.com) or your local distributor.

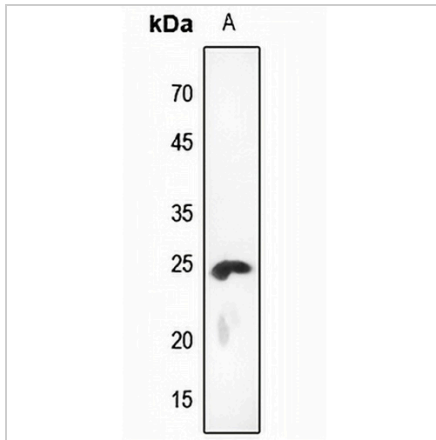
\*Clone Number, Reactivity, Source/Host and Clonality can be found in the product name and Key Features section above.

**DATASHEET**

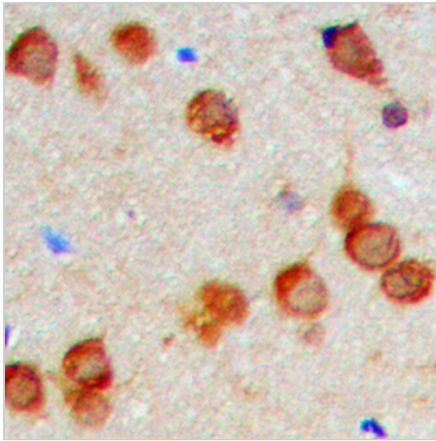
**KDEL2 Rabbit Polyclonal Antibody**

CAT. NO. APA09715

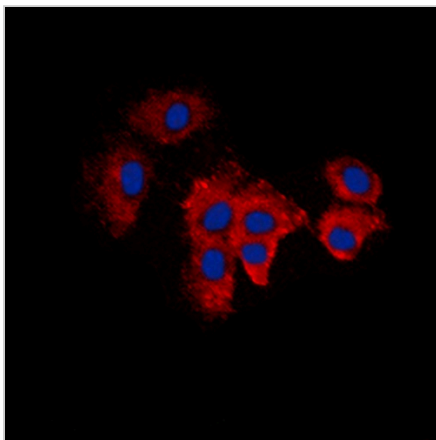
**DATA**



Western blot analysis of KDEL2 expression in rat testis (A) whole cell lysates. (Predicted band size: 24 kD; Observed band size: 24 kD)



Immunohistochemical analysis of KDEL2 staining in human brain formalin fixed paraffin embedded tissue section. The section was pre-treated using heat mediated antigen retrieval with sodium citrate buffer (pH 6.0). The section was then incubated with the antibody at room temperature and detected using an HRP conjugated compact polymer system. DAB was used as the chromogen. The section was then counterstained with haematoxylin and mounted with DPX.



Immunofluorescent analysis of KDEL2 staining in A549 cells. Formalin-fixed cells were permeabilized with 0.1% Triton X-100 in TBS for 5-10 minutes and blocked with 3% BSA-PBS for 30 minutes at room temperature. Cells were probed with the primary antibody in 3% BSA-PBS and incubated overnight at 4 °C in a humidified chamber. Cells were washed with PBST and incubated with a DyLight 594-conjugated secondary antibody (red) in PBS at room temperature in the dark. DAPI was used to stain the cell nuclei (blue).

**STORAGE**

Store at 4°C short term. For long term storage, store at -20°C, avoiding freeze/thaw cycles.

**NOTE**

For Research Use Only. Not for diagnostic, therapeutics, prophylactic or in vivo use.