

DATASHEET
PKC iota/zeta (Phospho-T412/410) Rabbit Polyclonal Antibody
CAT. NO. APA09759
KEY FEATURES

Target	PKC iota/zeta (Phospho-T412/410)	Source / Host	Rabbit
Reactivity	Human, Mouse, Rat, Dog, Rabbit, Zebrafish	Clonality	Polyclonal
Applications	WB, IHC, IF/ICC	Conjugation	Unconjugated
Form / Buffer	Liquid in 0.42% Potassium phosphate, 0.87% Sodium chloride, pH 7.3, 30% glycerol, and 0.01% sodium azide.	Storage	at-20°C

BACKGROUND

Calcium- and diacylglycerol-independent serine/ threonine-protein kinase that plays a general protective role against apoptotic stimuli, is involved in NF-kappa-B activation, cell survival, differentiation and polarity, and contributes to the regulation of microtubule dynamics in the early secretory pathway. Is necessary for BCR-ABL oncogene-mediated resistance to apoptotic drug in leukemia cells, protecting leukemia cells against drug-induced apoptosis. In cultured neurons, prevents amyloid beta protein-induced apoptosis by interrupting cell death process at a very early step. In glioblastoma cells, may function downstream of phosphatidylinositol 3-kinase (PI(3)K) and PDPK1 in the promotion of cell survival by phosphorylating and inhibiting the pro-apoptotic factor BAD.

APPLICATION

To ensure optimal assay performance, AREX recommends conducting reagent titration tailored to each testing system for optimal detection results.

WB	1:500 - 1:1000
IHC	1:100 - 1:200
IF/ICC	1:100 - 1:500

*Results are sample-specific. Please refer to your local assay conditions and test parameters for reference.

PRODUCT OVERVIEW

Description	Rabbit polyclonal antibody to PKC iota/zeta (Phospho-T412/410)
Specificity	Recognizes endogenous levels of PKC iota/zeta protein only when phosphorylated at T412/410.
Antibody Type	Primary antibody
Immunogen	KLH-conjugated synthetic phosphopeptide corresponding to residues surrounding T412/410 of human PKC iota/zeta protein. The exact sequence is proprietary.
Purification	The antibody was purified by immunogen affinity chromatography.
Molecular Weight	Predicted: 68; Observed: 78 kD
Form/Buffer	Liquid in 0.42% Potassium phosphate, 0.87% Sodium chloride, pH 7.3, 30% glycerol, and 0.01% sodium azide.
Alternative Names	DXS1179E; Protein kinase C iota type; Atypical protein kinase C-lambda/iota; PRKC-lambda/iota; aPKC-lambda/iota; nPKC-iota; PKC2; Protein kinase C zeta type; nPKC-zeta
Gene Symbol	PRKCI; PRKCZ
Entrez Gene	5584; 5590(Human); 18759; 18762(Mouse); 84006; 25522(Rat)
SwissProt	P41743; Q05513(Human); Q62074; Q02956(Mouse); F1M7Y5; P09217(Rat)

*AREX continuously optimizes our products. Webpage content may not reflect the latest updates. For inquiries, please contact info@arexbio.com or your local distributor.

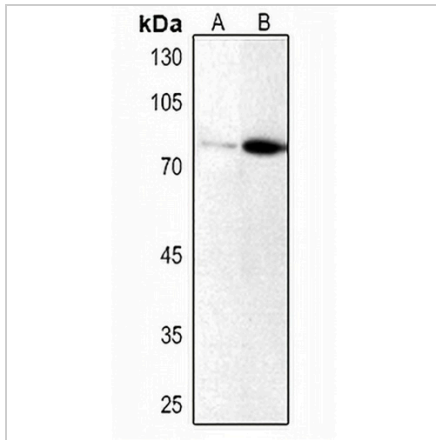
*Clone Number, Reactivity, Source/Host and Clonality can be found in the product name and Key Features section above.

DATASHEET

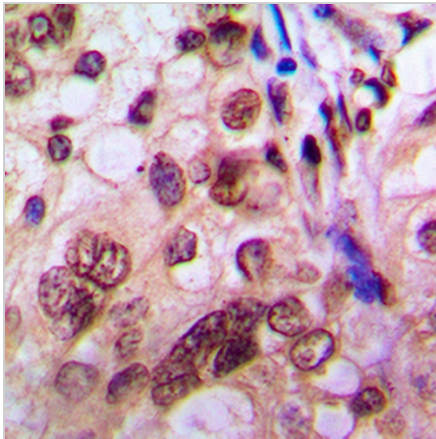
PKC iota/zeta (Phospho-T412/410) Rabbit Polyclonal Antibody

CAT. NO. APA09759

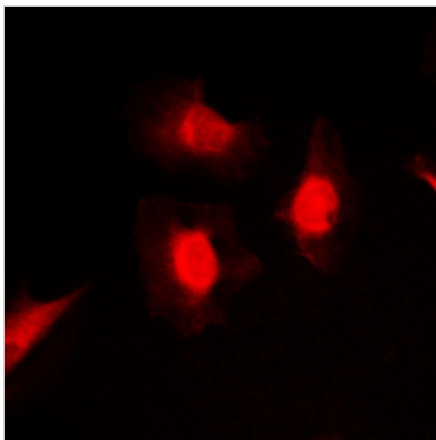
DATA



Western blot analysis of PKC iota/zeta (Phospho-T412/410) expression in HeLa (A), mouse lung (B) whole cell lysates. (Predicted band size: 68; 67 kD; Observed band size: 78 kD)



Immunohistochemical analysis of PKC iota/zeta (Phospho-T412/410) staining in human breast cancer formalin fixed paraffin embedded tissue section. The section was pre-treated using heat mediated antigen retrieval with sodium citrate buffer (pH 6.0). The section was then incubated with the antibody at room temperature and detected using an HRP conjugated compact polymer system. DAB was used as the chromogen. The section was then counterstained with haematoxylin and mounted with DPX.



Immunofluorescent analysis of PKC iota/zeta (Phospho-T412/410) staining in MCF7 cells. Formalin-fixed cells were permeabilized with 0.1% Triton X-100 in TBS for 5-10 minutes and blocked with 3% BSA-PBS for 30 minutes at room temperature. Cells were probed with the primary antibody in 3% BSA-PBS and incubated overnight at 4 °C in a humidified chamber. Cells were washed with PBST and incubated with a DyLight 594-conjugated secondary antibody (red) in PBS at room temperature in the dark.

STORAGE

Store at 4°C short term. For long term storage, store at -20°C, avoiding freeze/thaw cycles.

NOTE

For Research Use Only. Not for diagnostic, therapeutics, prophylactic or in vivo use.