

DATASHEET

PTP alpha (Phospho-Y798) Rabbit Polyclonal Antibody

CAT. NO. APA09762

KEY FEATURES

Target	PTP alpha (Phospho-Y798)	Source / Host	Rabbit
Reactivity	Human, Mouse, Rat, Chicken, Dog, Monkey, Rabbit, Sheep, Zebrafish	Clonality	Polyclonal
Applications	WB	Conjugation	Unconjugated
Form / Buffer	Liquid in 0.42% Potassium phosphate, 0.87% Sodium chloride, pH 7.3, 30% glycerol, and 0.01% sodium azide.	Storage	at-20°C

BACKGROUND

Tyrosine protein phosphatase which is involved in integrin-mediated focal adhesion formation . Following integrin engagement, specifically recruits BCAR3, BCAR1 and CRK to focal adhesions thereby promoting SRC-mediated phosphorylation of BRAC1 and the subsequent activation of PAK and small GTPase RAC1 and CDC42 .

APPLICATION

To ensure optimal assay performance, AREX recommends conducting reagent titration tailored to each testing system for optimal detection results.

WB	1:500 - 1:1000
----	----------------

*Results are sample-specific. Please refer to your local assay conditions and test parameters for reference.

PRODUCT OVERVIEW

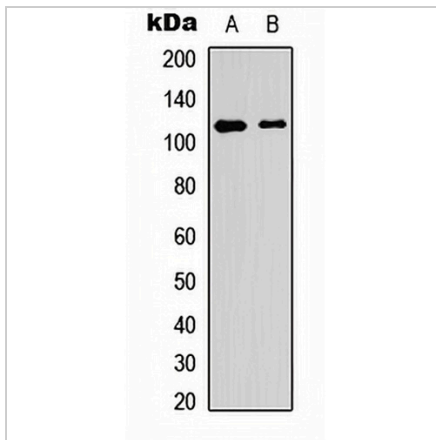
Description	Rabbit polyclonal antibody to PTP alpha (Phospho-Y798)
Specificity	Recognizes endogenous levels of PTP alpha protein only when phosphorylated at Y798.
Antibody Type	Primary antibody
Immunogen	KLH-conjugated synthetic phosphopeptide corresponding to residues surrounding Y798 of human PTP alpha protein. The exact sequence is proprietary.
Purification	The antibody was purified by immunogen affinity chromatography.
Molecular Weight	Predicted: 90 kD; Observed: 120 kD
Form/Buffer	Liquid in 0.42% Potassium phosphate, 0.87% Sodium chloride, pH 7.3, 30% glycerol, and 0.01% sodium azide.
Alternative Names	PTPA; PTPRL2; Receptor-type tyrosine-protein phosphatase alpha; Protein-tyrosine phosphatase alpha; R-PTP-alpha
Gene Symbol	PTPRA
Entrez Gene	5786(Human); 19262(Mouse)
SwissProt	P18433(Human); P18052(Mouse); Q03348(Rat)

*AREX continuously optimizes our products. Webpage content may not reflect the latest updates. For inquiries, please contact info@arexbio.com or your local distributor.

*Clone Number, Reactivity, Source/Host and Clonality can be found in the product name and Key Features section above.

DATASHEET**PTP alpha (Phospho-Y798) Rabbit Polyclonal Antibody**

CAT. NO. APA09762

DATA

Western blot analysis of PTP alpha (Phospho-Y798) expression in HT29 (A), NIH3T3 (B) whole cell lysates. (Predicted band size: 90 kD; Observed band size: 120 kD)

STORAGE

Store at 4°C short term. For long term storage, store at -20°C, avoiding freeze/thaw cycles.

NOTE

For Research Use Only. Not for diagnostic, therapeutics, prophylactic or in vivo use.