

DATASHEET

Paxillin (Phospho-Y31) Rabbit Polyclonal Antibody

CAT. NO. APA09764

KEY FEATURES

Target	Paxillin (Phospho-Y31)	Source / Host	Rabbit
Reactivity	Human, Pig	Clonality	Polyclonal
Applications	WB, IHC	Conjugation	Unconjugated
Form / Buffer	Liquid in 0.42% Potassium phosphate, 0.87% Sodium chloride, pH 7.3, 30% glycerol, and 0.01% sodium azide.		Storage at -20°C

BACKGROUND

Cytoskeletal protein involved in actin-membrane attachment at sites of cell adhesion to the extracellular matrix (focal adhesion). Recruits other proteins such as TRIM15 to focal adhesion.

APPLICATION

To ensure optimal assay performance, AREX recommends conducting reagent titration tailored to each testing system for optimal detection results.

WB	1:500 - 1:1000
IHC	1:100 - 1:200

*Results are sample-specific. Please refer to your local assay conditions and test parameters for reference.

PRODUCT OVERVIEW

Description	Rabbit polyclonal antibody to Paxillin (Phospho-Y31)
Specificity	Recognizes endogenous levels of Paxillin protein only when phosphorylated at Y31.
Antibody Type	Primary antibody
Immunogen	KLH-conjugated synthetic phosphopeptide corresponding to residues surrounding Y31 of human Paxillin protein. The exact sequence is proprietary.
Purification	The antibody was purified by immunogen affinity chromatography.
Molecular Weight	Predicted: 64 kD; Observed: 68 kD
Form/Buffer	Liquid in 0.42% Potassium phosphate, 0.87% Sodium chloride, pH 7.3, 30% glycerol, and 0.01% sodium azide.
Alternative Names	Paxillin
Gene Symbol	PXN
Entrez Gene	5829(Human); 19303(Mouse); 360820(Rat)
SwissProt	P49023(Human); Q8VI36(Mouse); Q66H76(Rat)

*AREX continuously optimizes our products. Webpage content may not reflect the latest updates. For inquiries, please contact info@arexbio.com or your local distributor.

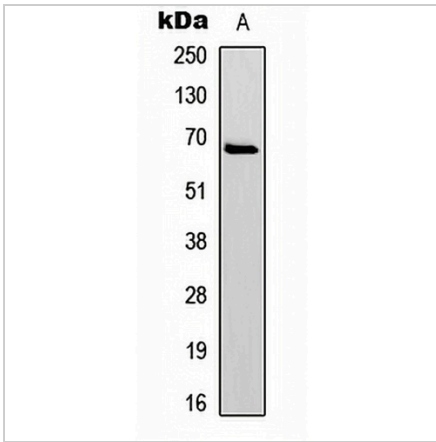
*Clone Number, Reactivity, Source/Host and Clonality can be found in the product name and Key Features section above.

DATASHEET

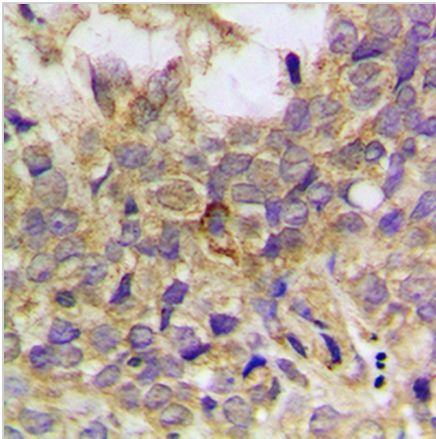
Paxillin (Phospho-Y31) Rabbit Polyclonal Antibody

CAT. NO. APA09764

DATA



Western blot analysis of Paxillin (Phospho-Y31) expression in HeLa TNFα-treated (A) whole cell lysates. (Predicted band size: 64 kD; Observed band size: 68 kD)



Immunohistochemical analysis of Paxillin (Phospho-Y31) staining in human breast cancer formalin fixed paraffin embedded tissue section. The section was pre-treated using heat mediated antigen retrieval with sodium citrate buffer (pH 6.0). The section was then incubated with the antibody at room temperature and detected using an HRP conjugated compact polymer system. DAB was used as the chromogen. The section was then counterstained with haematoxylin and mounted with DPX.

STORAGE

Store at 4°C short term. For long term storage, store at -20°C, avoiding freeze/thaw cycles.

NOTE

For Research Use Only. Not for diagnostic, therapeutics, prophylactic or in vivo use.