

DATASHEET

RagA/B Rabbit Polyclonal Antibody

CAT. NO. APA09773

KEY FEATURES

Target	RagA/B	Source / Host	Rabbit
Reactivity	Human, Mouse, Rat, Bovine, Monkey	Clonality	Polyclonal
Applications	WB, IHC	Conjugation	Unconjugated
Form / Buffer	Liquid in 0.42% Potassium phosphate, 0.87% Sodium chloride, pH 7.3, 30% glycerol, and 0.01% sodium azide.		Storage at -20°C

BACKGROUND

Guanine nucleotide-binding protein that plays a crucial role in the cellular response to amino acid availability through regulation of the mTORC1 signaling cascade . Forms heterodimeric Rag complexes with RagC/RRAGC or RagD/RRAGD and cycles between an inactive GDP-bound and an active GTP-bound form: RagA/RRAGA is in its active form when GTP-bound RagA/RRAGA forms a complex with GDP-bound RagC/RRAGC (or RagD/RRAGD) and in an inactive form when GDP-bound RagA/RRAGA heterodimerizes with GTP-bound RagC/RRAGC (or RagD/RRAGD) . In its GTP-bound active form, promotes the recruitment of mTORC1 to the lysosomes and its subsequent activation by the GTPase RHEB . Involved in the RCC1/Ran-GTPase pathway . May play a direct role in a TNF signaling pathway leading to induction of cell death .

APPLICATION

To ensure optimal assay performance, AREX recommends conducting reagent titration tailored to each testing system for optimal detection results.

WB	1:500 - 1:1000
IHC	1:100 - 1:200

*Results are sample-specific. Please refer to your local assay conditions and test parameters for reference.

PRODUCT OVERVIEW

Description	Rabbit polyclonal antibody to RagA/B
Specificity	Recognizes endogenous levels of RagA/B protein.
Antibody Type	Primary antibody
Immunogen	KLH-conjugated synthetic peptide encompassing a sequence within the C-term region of human RagA/B. The exact sequence is proprietary.
Purification	The antibody was purified by immunogen affinity chromatography.
Molecular Weight	Predicted: 36; Observed: 36 kD
Form/Buffer	Liquid in 0.42% Potassium phosphate, 0.87% Sodium chloride, pH 7.3, 30% glycerol, and 0.01% sodium azide.
Alternative Names	RRAGA; Ras-related GTP-binding protein A; Rag A; RagA; Adenovirus E3 14.7 kDa-interacting protein 1; FIP-1; RRAGB; Ras-related GTP-binding protein B; Rag B; RagB
Gene Symbol	RRAGA; RRAGB
Entrez Gene	10670; 10325(Human); 68441; 245670(Mouse); 117044; 100909655(Rat)
SwissProt	Q7L523; Q5VZM2(Human); Q80X95; Q6NTA4(Mouse); Q63486; Q63487(Rat)

*AREX continuously optimizes our products. Webpage content may not reflect the latest updates. For inquiries, please contact info@arexbio.com or your local distributor.

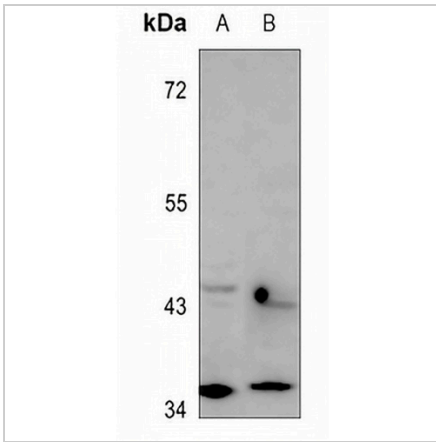
*Clone Number, Reactivity, Source/Host and Clonality can be found in the product name and Key Features section above.

DATASHEET

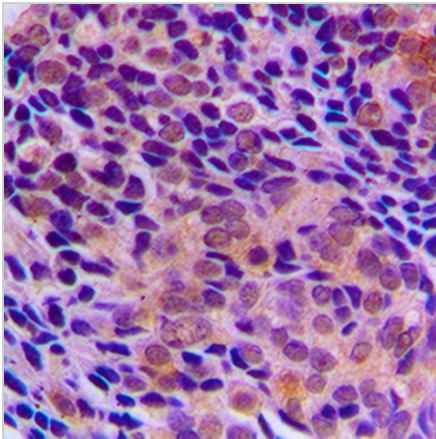
RagA/B Rabbit Polyclonal Antibody

CAT. NO. APA09773

DATA



Western blot analysis of RagA/B expression in mouse lung (A), rat testis (B) whole cell lysates. (Predicted band size: 36; 43 kD; Observed band size: 36 kD)



Immunohistochemical analysis of RagA/B staining in human prostate cancer formalin fixed paraffin embedded tissue section. The section was pre-treated using heat mediated antigen retrieval with sodium citrate buffer (pH 6.0). The section was then incubated with the antibody at room temperature and detected using an HRP conjugated compact polymer system. DAB was used as the chromogen. The section was then counterstained with haematoxylin and mounted with DPX.

STORAGE

Store at 4°C short term. For long term storage, store at -20°C, avoiding freeze/thaw cycles.

NOTE

For Research Use Only. Not for diagnostic, therapeutics, prophylactic or in vivo use.