

**DATASHEET**

**Septin 3 Rabbit Polyclonal Antibody**

CAT. NO. APA09808

**KEY FEATURES**

Target	Septin 3	Source / Host	Rabbit
Reactivity	Human, Mouse, Rat, Bovine, Zebrafish	Clonality	Polyclonal
Applications	WB	Conjugation	Unconjugated
Form / Buffer	Liquid in 0.42% Potassium phosphate, 0.87% Sodium chloride, pH 7.3, 30% glycerol, and 0.01% sodium azide.		Storage at -20°C

**BACKGROUND**

Filament-forming cytoskeletal GTPase . May play a role in cytokinesis (Potential).

**APPLICATION**

To ensure optimal assay performance, AREX recommends conducting reagent titration tailored to each testing system for optimal detection results.

WB	1:500 - 1:1000
----	----------------

\*Results are sample-specific. Please refer to your local assay conditions and test parameters for reference.

**PRODUCT OVERVIEW**

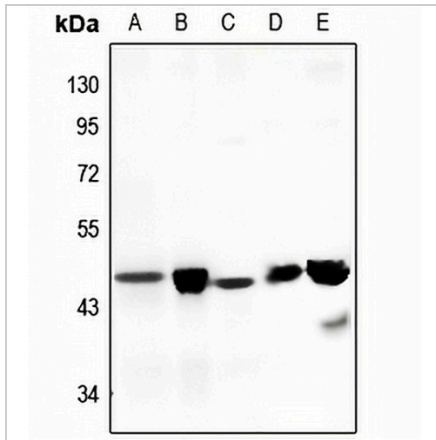
Description	Rabbit polyclonal antibody to Septin 3
Specificity	Recognizes endogenous levels of Septin 3 protein.
Antibody Type	Primary antibody
Immunogen	KLH-conjugated synthetic peptide encompassing a sequence within the center region of human Septin 3. The exact sequence is proprietary.
Purification	The antibody was purified by immunogen affinity chromatography.
Molecular Weight	Predicted: 40 kD; Observed: 45 kD
Form/Buffer	Liquid in 0.42% Potassium phosphate, 0.87% Sodium chloride, pH 7.3, 30% glycerol, and 0.01% sodium azide.
Alternative Names	SEP3; Neuronal-specific septin-3
Gene Symbol	SEPT3
Entrez Gene	55964(Human); 24050(Mouse); 56003(Rat)
SwissProt	Q9UH03(Human); Q9Z1S5(Mouse); Q9WU34(Rat)

\*AREX continuously optimizes our products. Webpage content may not reflect the latest updates. For inquiries, please contact [info@arexbio.com](mailto:info@arexbio.com) or your local distributor.

\*Clone Number, Reactivity, Source/Host and Clonality can be found in the product name and Key Features section above.

**DATASHEET****Septin 3 Rabbit Polyclonal Antibody**

CAT. NO. APA09808

**DATA**

Western blot analysis of Septin 3 expression in mouse brain (A), rat brain (B), HeLa (C), mouse kidney (D), rat kidney (E) whole cell lysates. (Predicted band size: 40 kD; Observed band size: 45 kD)

**STORAGE**

Store at 4°C short term. For long term storage, store at -20°C, avoiding freeze/thaw cycles.

**NOTE**

For Research Use Only. Not for diagnostic, therapeutics, prophylactic or in vivo use.