

**DATASHEET**

**GRK2 Rabbit Polyclonal Antibody**

CAT. NO. APA09812

**KEY FEATURES**

Target	GRK2	Source / Host	Rabbit
Reactivity	Human, Mouse, Rat, Bovine	Clonality	Polyclonal
Applications	WB, IHC	Conjugation	Unconjugated
Form / Buffer	Liquid in 0.42% Potassium phosphate, 0.87% Sodium chloride, pH 7.3, 30% glycerol, and 0.01% sodium azide.		Storage at -20°C

**BACKGROUND**

Specifically phosphorylates the agonist-occupied form of the beta-adrenergic and closely related receptors, probably inducing a desensitization of them . Phosphorylates catecholamine-activated ADRB2 to regulate physiological cardiomyocyte contraction rate responses . Also phosphorylates ligand-bound C3a and C5a anaphylatoxin receptors (C3AR1 and C5AR1, respectively), leading to receptor desensitization . Key regulator of LPAR1 signaling . Competes with RALA for binding to LPAR1 thus affecting the signaling properties of the receptor . Desensitizes LPAR1 and LPAR2 in a phosphorylation-independent manner . Positively regulates ciliary smoothened (SMO)-dependent Hedgehog (Hh) signaling pathway by facilitating the trafficking of SMO into the cilium and the stimulation of SMO activity .

**APPLICATION**

To ensure optimal assay performance, AREX recommends conducting reagent titration tailored to each testing system for optimal detection results.

WB	1:500 - 1:1000
IHC	1:100 - 1:200

\*Results are sample-specific. Please refer to your local assay conditions and test parameters for reference.

**PRODUCT OVERVIEW**

Description	Rabbit polyclonal antibody to GRK2
Specificity	Recognizes endogenous levels of GRK2 protein.
Antibody Type	Primary antibody
Immunogen	KLH-conjugated synthetic peptide encompassing a sequence within the N-term region of human GRK2. The exact sequence is proprietary.
Purification	The antibody was purified by immunogen affinity chromatography.
Molecular Weight	Predicted: 79 kD; Observed: 80 kD
Form/Buffer	Liquid in 0.42% Potassium phosphate, 0.87% Sodium chloride, pH 7.3, 30% glycerol, and 0.01% sodium azide.
Alternative Names	BARK; BARK1; GRK2; Beta-adrenergic receptor kinase 1; Beta-ARK-1; G-protein coupled receptor kinase 2
Gene Symbol	ADRBK1
Entrez Gene	156(Human); 25238(Rat)
SwissProt	P25098(Human); Q99MK8(Mouse); P26817(Rat)

\*AREX continuously optimizes our products. Webpage content may not reflect the latest updates. For inquiries, please contact [info@arexbio.com](mailto:info@arexbio.com) or your local distributor.

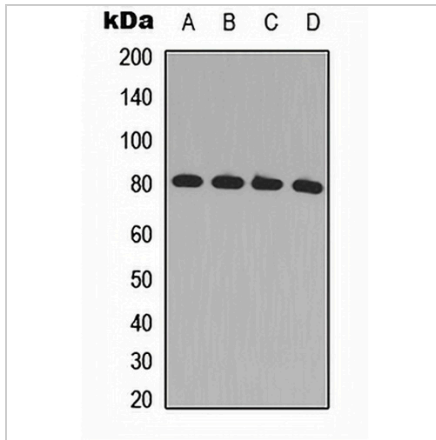
\*Clone Number, Reactivity, Source/Host and Clonality can be found in the product name and Key Features section above.

**DATASHEET**

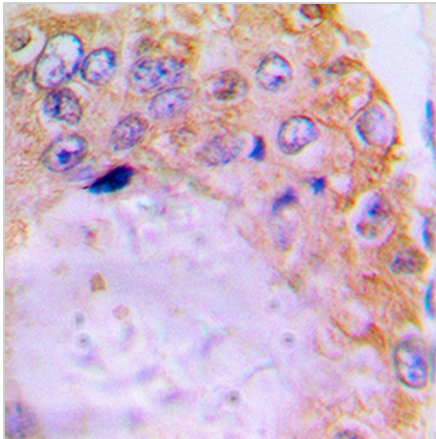
**GRK2 Rabbit Polyclonal Antibody**

CAT. NO. APA09812

**DATA**



Western blot analysis of GRK2 expression in Jurkat (A), Raji (B), mouse kidney (C), rat kidney (D) whole cell lysates. (Predicted band size: 79 kD; Observed band size: 80 kD)



Immunohistochemical analysis of GRK2 staining in human prostate cancer formalin fixed paraffin embedded tissue section. The section was pre-treated using heat mediated antigen retrieval with sodium citrate buffer (pH 6.0). The section was then incubated with the antibody at room temperature and detected using an HRP conjugated compact polymer system. DAB was used as the chromogen. The section was then counterstained with haematoxylin and mounted with DPX.

**STORAGE**

Store at 4°C short term. For long term storage, store at -20°C, avoiding freeze/thaw cycles.

**NOTE**

For Research Use Only. Not for diagnostic, therapeutics, prophylactic or in vivo use.