

DATASHEET

BAI1 Rabbit Polyclonal Antibody

CAT. NO. APA09833

KEY FEATURES

Target	BAI1	Source / Host	Rabbit
Reactivity	Human, Mouse, Monkey	Clonality	Polyclonal
Applications	WB, IF/ICC	Conjugation	Unconjugated
Form / Buffer	Liquid in 0.42% Potassium phosphate, 0.87% Sodium chloride, pH 7.3, 30% glycerol, and 0.01% sodium azide.		Storage at -20°C

BACKGROUND

Phosphatidylserine receptor which enhances the engulfment of apoptotic cells . Also mediates the binding and engulfment of Gram-negative bacteria . Stimulates production of reactive oxygen species by macrophages in response to Gram-negative bacteria, resulting in enhanced microbicidal macrophage activity . In the gastric mucosa, required for recognition and engulfment of apoptotic gastric epithelial cells . Promotes myoblast fusion . Activates the Rho pathway in a G-protein-dependent manner . Inhibits MDM2-mediated ubiquitination and degradation of DLG4/PSD95, promoting DLG4 stability and regulating synaptic plasticity . Required for the formation of dendritic spines by ensuring the correct localization of PARD3 and TIAM1 .

APPLICATION

To ensure optimal assay performance, AREX recommends conducting reagent titration tailored to each testing system for optimal detection results.

WB	1:500 - 1:1000
IF/ICC	1:100 - 1:500

*Results are sample-specific. Please refer to your local assay conditions and test parameters for reference.

PRODUCT OVERVIEW

Description	Rabbit polyclonal antibody to BAI1
Specificity	Recognizes endogenous levels of BAI1 protein.
Antibody Type	Primary antibody
Immunogen	KLH-conjugated synthetic peptide encompassing a sequence within the center region of human BAI1. The exact sequence is proprietary.
Purification	The antibody was purified by immunogen affinity chromatography.
Molecular Weight	Predicted: 173 kD; Observed: 174 kD
Form/Buffer	Liquid in 0.42% Potassium phosphate, 0.87% Sodium chloride, pH 7.3, 30% glycerol, and 0.01% sodium azide.
Alternative Names	Brain-specific angiogenesis inhibitor 1
Gene Symbol	BAI1
Entrez Gene	575(Human); 107831(Mouse)
SwissProt	O14514(Human); Q3UHD1(Mouse)

*AREX continuously optimizes our products. Webpage content may not reflect the latest updates. For inquiries, please contact info@arexbio.com or your local distributor.

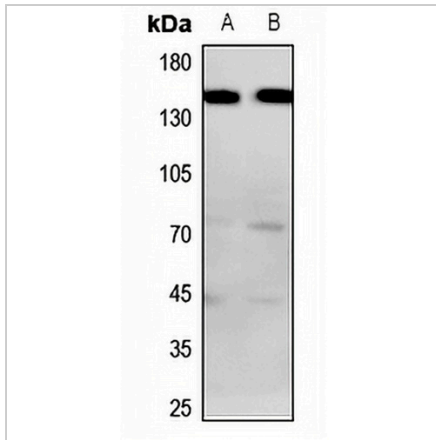
*Clone Number, Reactivity, Source/Host and Clonality can be found in the product name and Key Features section above.

DATASHEET

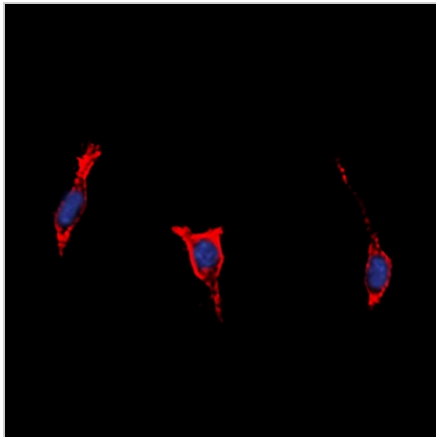
BAI1 Rabbit Polyclonal Antibody

CAT. NO. APA09833

DATA



Western blot analysis of BAI1 expression in HepG2 (A), A375 (B) whole cell lysates. (Predicted band size: 173 kD; Observed band size: 174 kD)



Immunofluorescent analysis of BAI1 staining in HepG2 cells. Formalin-fixed cells were permeabilized with 0.1% Triton X-100 in TBS for 5-10 minutes and blocked with 3% BSA-PBS for 30 minutes at room temperature. Cells were probed with the primary antibody in 3% BSA-PBS and incubated overnight at 4 °C in a humidified chamber. Cells were washed with PBST and incubated with a DyLight 594-conjugated secondary antibody (red) in PBS at room temperature in the dark. DAPI was used to stain the cell nuclei (blue).

STORAGE

Store at 4°C short term. For long term storage, store at -20°C, avoiding freeze/thaw cycles.

NOTE

For Research Use Only. Not for diagnostic, therapeutics, prophylactic or in vivo use.