

**DATASHEET**

**CLIC3 Rabbit Polyclonal Antibody**

CAT. NO. APA09853

**KEY FEATURES**

Target	CLIC3	Source / Host	Rabbit
Reactivity	Human, Mouse, Rat	Clonality	Polyclonal
Applications	WB	Conjugation	Unconjugated
Form / Buffer	Liquid in 0.42% Potassium phosphate, 0.87% Sodium chloride, pH 7.3, 30% glycerol, and 0.01% sodium azide.		Storage at -20°C

**BACKGROUND**

In the soluble state, catalyzes glutaredoxin-like thiol disulfide exchange reactions with reduced glutathione as electron donor . Reduced in a glutathione-dependent way and secreted into the extracellular matrix where it activates TGM2 and promotes blood vessel growth during tissue remodeling as occurs in tumorigenesis. Can reduce specific cysteines in TGM2 and regulate cofactor binding . Can insert into membranes and form outwardly rectifying chloride ion channels. May participate in cellular growth control.

**APPLICATION**

To ensure optimal assay performance, AREX recommends conducting reagent titration tailored to each testing system for optimal detection results.

WB	1:500 - 1:1000
----	----------------

\*Results are sample-specific. Please refer to your local assay conditions and test parameters for reference.

**PRODUCT OVERVIEW**

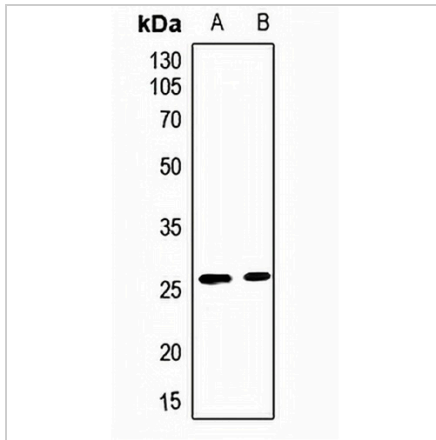
Description	Rabbit polyclonal antibody to CLIC3
Specificity	Recognizes endogenous levels of CLIC3 protein.
Antibody Type	Primary antibody
Immunogen	KLH-conjugated synthetic peptide encompassing a sequence within the center region of human CLIC3. The exact sequence is proprietary.
Purification	The antibody was purified by immunogen affinity chromatography.
Molecular Weight	Predicted: 26 kD; Observed: 26 kD
Form/Buffer	Liquid in 0.42% Potassium phosphate, 0.87% Sodium chloride, pH 7.3, 30% glycerol, and 0.01% sodium azide.
Alternative Names	Chloride intracellular channel protein 3
Gene Symbol	CLIC3
Entrez Gene	9022(Human)
SwissProt	O95833(Human)

\*AREX continuously optimizes our products. Webpage content may not reflect the latest updates. For inquiries, please contact [info@arexbio.com](mailto:info@arexbio.com) or your local distributor.

\*Clone Number, Reactivity, Source/Host and Clonality can be found in the product name and Key Features section above.

**DATASHEET****CLIC3 Rabbit Polyclonal Antibody**

CAT. NO. APA09853

**DATA**

Western blot analysis of CLIC3 expression in mouse testis (A), rat lung (B) whole cell lysates. (Predicted band size: 26 kD; Observed band size: 26 kD)

**STORAGE**

Store at 4°C short term. For long term storage, store at -20°C, avoiding freeze/thaw cycles.

**NOTE**

For Research Use Only. Not for diagnostic, therapeutics, prophylactic or in vivo use.