

**DATASHEET**
**CREB (Phospho-S142) Rabbit Polyclonal Antibody**
**CAT. NO. APA09859**
**KEY FEATURES**

|               |   |               |              |
|---------------|---|---------------|--------------|
| Target        | CREB (Phospho-S142)   | Source / Host | Rabbit       |
| Reactivity    | Human, Mouse, Rat, Bovine, Chicken, Pig, Sheep, Zebrafish   | Clonality     | Polyclonal   |
| Applications  | WB, IHC, IF/ICC   | Conjugation   | Unconjugated |
| Form / Buffer | Liquid in 0.42% Potassium phosphate, 0.87% Sodium chloride, pH 7.3, 30% glycerol, and 0.01% sodium azide. | Storage       | at-20°C      |

**BACKGROUND**

Phosphorylation-dependent transcription factor that stimulates transcription upon binding to the DNA cAMP response element (CRE), a sequence present in many viral and cellular promoters . Transcription activation is enhanced by the TORC coactivators which act independently of Ser-119 phosphorylation , a sequence present in many viral and cellular promoters . Transcription activation is enhanced by the TORC coactivators which act independently of Ser-119 phosphorylation . Involved in different cellular processes including the synchronization of circadian rhythmicity and the differentiation of adipose cells . Regulates the expression of apoptotic and inflammatory response factors in cardiomyocytes in response to ERFE-mediated activation of AKT signaling .

**APPLICATION**

To ensure optimal assay performance, AREX recommends conducting reagent titration tailored to each testing system for optimal detection results.

|        |                |
|--------|----------------|
| WB     | 1:500 - 1:1000 |
| IHC    | 1:100 - 1:200  |
| IF/ICC | 1:100 - 1:500  |

\*Results are sample-specific. Please refer to your local assay conditions and test parameters for reference.

**PRODUCT OVERVIEW**

|                   |  |
|-------------------|--|
| Description       | Rabbit polyclonal antibody to CREB (Phospho-S142)  |
| Specificity       | Recognizes endogenous levels of CREB protein only when phosphorylated at S142.   |
| Antibody Type     | Primary antibody   |
| Immunogen         | KLH-conjugated synthetic phosphopeptide corresponding to residues surrounding S142 of human CREB protein. The exact sequence is proprietary. |
| Purification      | The antibody was purified by immunogen affinity chromatography.  |
| Molecular Weight  | Predicted: 35 kD; Observed: 43 kD  |
| Form/Buffer       | Liquid in 0.42% Potassium phosphate, 0.87% Sodium chloride, pH 7.3, 30% glycerol, and 0.01% sodium azide.                                    |
| Alternative Names | Cyclic AMP-responsive element-binding protein 1; CREB-1; cAMP-responsive element-binding protein 1   |
| Gene Symbol       | CREB1  |
| Entrez Gene       | 1385(Human); 12912(Mouse); 81646(Rat)  |
| SwissProt         | P16220(Human); Q01147(Mouse); P15337(Rat)  |

\*AREX continuously optimizes our products. Webpage content may not reflect the latest updates. For inquiries, please contact [info@arexbio.com](mailto:info@arexbio.com) or your local distributor.

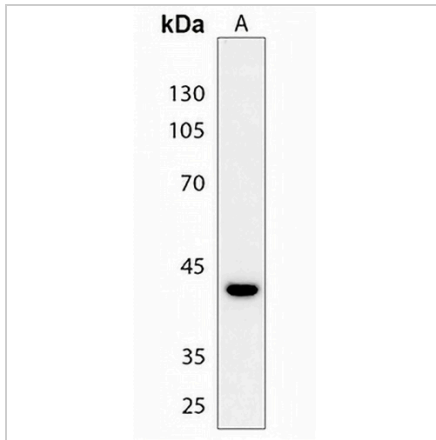
\*Clone Number, Reactivity, Source/Host and Clonality can be found in the product name and Key Features section above.

**DATASHEET**

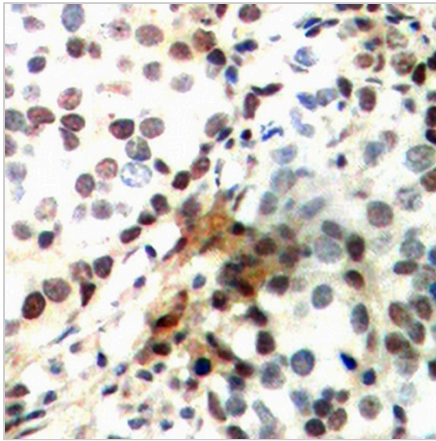
**CREB (Phospho-S142) Rabbit Polyclonal Antibody**

CAT. NO. APA09859

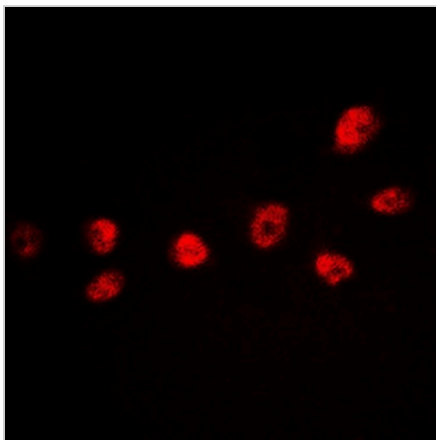
**DATA**



Western blot analysis of CREB (Phospho-S142) expression in mouse heart (A) whole cell lysates. (Predicted band size: 35 kD; Observed band size: 43 kD)



Immunohistochemical analysis of CREB (Phospho-S142) staining in human breast cancer formalin fixed paraffin embedded tissue section. The section was pre-treated using heat mediated antigen retrieval with sodium citrate buffer (pH 6.0). The section was then incubated with the antibody at room temperature and detected using an HRP conjugated compact polymer system. DAB was used as the chromogen. The section was then counterstained with haematoxylin and mounted with DPX.



Immunofluorescent analysis of CREB (Phospho-S142) staining in HeLa cells. Formalin-fixed cells were permeabilized with 0.1% Triton X-100 in TBS for 5-10 minutes and blocked with 3% BSA-PBS for 30 minutes at room temperature. Cells were probed with the primary antibody in 3% BSA-PBS and incubated overnight at 4 °C in a humidified chamber. Cells were washed with PBST and incubated with a DyLight 594-conjugated secondary antibody (red) in PBS at room temperature in the dark.

**STORAGE**

Store at 4°C short term. For long term storage, store at -20°C, avoiding freeze/thaw cycles.

**NOTE**

For Research Use Only. Not for diagnostic, therapeutics, prophylactic or in vivo use.