

DATASHEET

Beta-catenin (Phospho-T41/S45) Rabbit Polyclonal Antibody

CAT. NO. APA09867

KEY FEATURES

Target	Beta-catenin (Phospho-T41/S45)	Source / Host	Rabbit
Reactivity	Human, Mouse, Rat, Bovine, Dog, Pig, Rabbit, Sheep, Zebrafish	Clonality	Polyclonal
Applications	WB	Conjugation	Unconjugated
Form / Buffer	Liquid in 0.42% Potassium phosphate, 0.87% Sodium chloride, pH 7.3, 30% glycerol, and 0.01% sodium azide.		Storage at -20°C

BACKGROUND

Key downstream component of the canonical Wnt signaling pathway . In the absence of Wnt, forms a complex with AXIN1, AXIN2, APC, CSNK1A1 and GSK3B that promotes phosphorylation on N-terminal Ser and Thr residues and ubiquitination of CTNNB1 via BTRC and its subsequent degradation by the proteasome . In the presence of Wnt ligand, CTNNB1 is not ubiquitinated and accumulates in the nucleus, where it acts as a coactivator for transcription factors of the TCF/LEF family, leading to activate Wnt responsive genes . Also acts as a coactivator for other transcription factors, such as NR5A2 . Promotes epithelial to mesenchymal transition/mesenchymal to epithelial transition (EMT/MET) via driving transcription of CTNNB1/TCF-target genes .

APPLICATION

To ensure optimal assay performance, AREX recommends conducting reagent titration tailored to each testing system for optimal detection results.

WB	1:500 - 1:1000
----	----------------

*Results are sample-specific. Please refer to your local assay conditions and test parameters for reference.

PRODUCT OVERVIEW

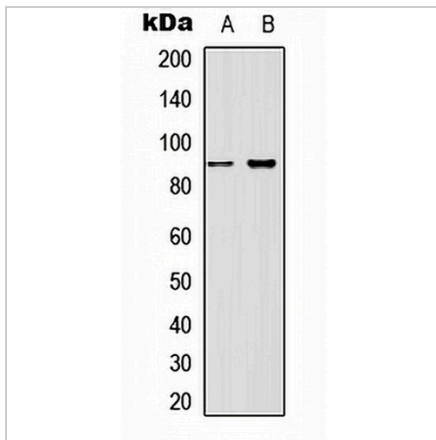
Description	Rabbit polyclonal antibody to Beta-catenin (Phospho-T41/S45)
Specificity	Recognizes endogenous levels of Beta-catenin protein only when phosphorylated at T41/S45.
Antibody Type	Primary antibody
Immunogen	KLH-conjugated synthetic phosphopeptide corresponding to residues surrounding T41/S45 of human Beta-catenin protein. The exact sequence is proprietary.
Purification	The antibody was purified by immunogen affinity chromatography.
Molecular Weight	Predicted: 85 kD; Observed: 92 kD
Form/Buffer	Liquid in 0.42% Potassium phosphate, 0.87% Sodium chloride, pH 7.3, 30% glycerol, and 0.01% sodium azide.
Alternative Names	CTNNB; Catenin beta-1; Beta-catenin
Gene Symbol	CTNNB1
Entrez Gene	1499(Human); 12387(Mouse); 84353(Rat)
SwissProt	P35222(Human); Q02248(Mouse); Q9WU82(Rat)

*AREX continuously optimizes our products. Webpage content may not reflect the latest updates. For inquiries, please contact info@arex.bio or your local distributor.

*Clone Number, Reactivity, Source/Host and Clonality can be found in the product name and Key Features section above.

DATASHEET**Beta-catenin (Phospho-T41/S45) Rabbit Polyclonal Antibody**

CAT. NO. APA09867

DATA

Western blot analysis of Beta-catenin (Phospho-T41/S45) expression in HeLa (A), HepG2 (B) whole cell lysates. (Predicted band size: 85 kD; Observed band size: 92 kD)

STORAGE

Store at 4°C short term. For long term storage, store at -20°C, avoiding freeze/thaw cycles.

NOTE

For Research Use Only. Not for diagnostic, therapeutics, prophylactic or in vivo use.