

DATASHEET

ELK1 (Phospho-T417) Rabbit Polyclonal Antibody

CAT. NO. APA09878

KEY FEATURES

Target	ELK1 (Phospho-T417)	Source / Host	Rabbit
Reactivity	Human, Mouse, Rat	Clonality	Polyclonal
Applications	WB, IHC, IP	Conjugation	Unconjugated
Form / Buffer	Liquid in 0.42% Potassium phosphate, 0.87% Sodium chloride, pH 7.3, 30% glycerol, and 0.01% sodium azide.	Storage	at-20°C

BACKGROUND

Transcription factor that binds to purine-rich DNA sequences . Forms a ternary complex with SRF and the ETS and SRF motifs of the serum response element (SRE) on the promoter region of immediate early genes such as FOS and IER2 . Induces target gene transcription upon JNK and MAPK-signaling pathways stimulation .

APPLICATION

To ensure optimal assay performance, AREX recommends conducting reagent titration tailored to each testing system for optimal detection results.

WB	1:500 - 1:1000
IHC	1:100 - 1:200
IP	1:10 - 1:100

*Results are sample-specific. Please refer to your local assay conditions and test parameters for reference.

PRODUCT OVERVIEW

Description	Rabbit polyclonal antibody to ELK1 (Phospho-T417)
Specificity	Recognizes endogenous levels of ELK1 protein only when phosphorylated at T417.
Antibody Type	Primary antibody
Immunogen	KLH-conjugated synthetic phosphopeptide corresponding to residues surrounding T417 of human ELK1 protein. The exact sequence is proprietary.
Purification	The antibody was purified by immunogen affinity chromatography.
Molecular Weight	Predicted: 44 kD; Observed: 62 kD
Form/Buffer	Liquid in 0.42% Potassium phosphate, 0.87% Sodium chloride, pH 7.3, 30% glycerol, and 0.01% sodium azide.
Alternative Names	ETS domain-containing protein Elk-1
Gene Symbol	ELK1
Entrez Gene	2002(Human); 13712(Mouse)
SwissProt	P19419(Human); P41969(Mouse)

*AREX continuously optimizes our products. Webpage content may not reflect the latest updates. For inquiries, please contact info@arexbio.com or your local distributor.

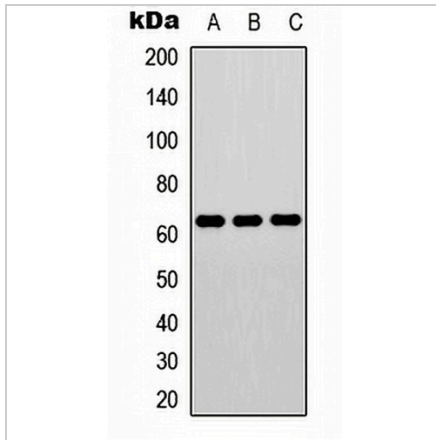
*Clone Number, Reactivity, Source/Host and Clonality can be found in the product name and Key Features section above.

DATASHEET

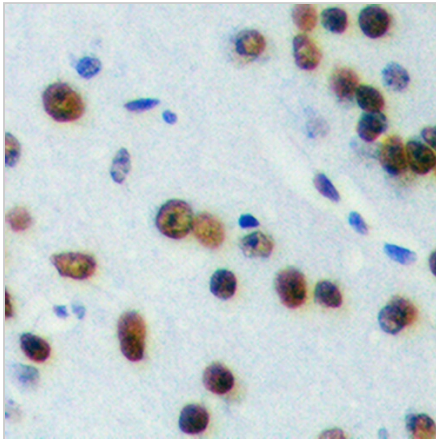
ELK1 (Phospho-T417) Rabbit Polyclonal Antibody

CAT. NO. APA09878

DATA



Western blot analysis of ELK1 (Phospho-T417) expression in MCF7 (A), SP20 (B), PC12 (C) whole cell lysates. (Predicted band size: 44 kD; Observed band size: 62 kD)



Immunohistochemical analysis of ELK1 (Phospho-T417) staining in human brain formalin fixed paraffin embedded tissue section. The section was pre-treated using heat mediated antigen retrieval with sodium citrate buffer (pH 6.0). The section was then incubated with the antibody at room temperature and detected using an HRP conjugated compact polymer system. DAB was used as the chromogen. The section was then counterstained with haematoxylin and mounted with DPX.

STORAGE

Store at 4°C short term. For long term storage, store at -20°C, avoiding freeze/thaw cycles.

NOTE

For Research Use Only. Not for diagnostic, therapeutics, prophylactic or in vivo use.