

DATASHEET

GBP5 Rabbit Polyclonal Antibody

CAT. NO. APA09894

KEY FEATURES

Target	GBP5	Source / Host	Rabbit
Reactivity	Human, Rat	Clonality	Polyclonal
Applications	WB	Conjugation	Unconjugated
Form / Buffer	Liquid in 0.42% Potassium phosphate, 0.87% Sodium chloride, pH 7.3, 30% glycerol, and 0.01% sodium azide.		Storage at -20°C

BACKGROUND

Interferon (IFN)-inducible GTPase that plays important roles in innate immunity against a diverse range of bacterial, viral and protozoan pathogens . Hydrolyzes GTP, but in contrast to other family members, does not produce GMP -inducible GTPase that plays important roles in innate immunity against a diverse range of bacterial, viral and protozoan pathogens . Hydrolyzes GTP, but in contrast to other family members, does not produce GMP . Following infection, recruited to the pathogen-containing vacuoles or vacuole-escaped bacteria and acts as a positive regulator of inflammasome assembly by promoting the release of inflammasome ligands from bacteria . Acts by promoting lysis of pathogen-containing vacuoles, releasing pathogens into the cytosol .

APPLICATION

To ensure optimal assay performance, AREX recommends conducting reagent titration tailored to each testing system for optimal detection results.

WB	1:500 - 1:1000
----	----------------

*Results are sample-specific. Please refer to your local assay conditions and test parameters for reference.

PRODUCT OVERVIEW

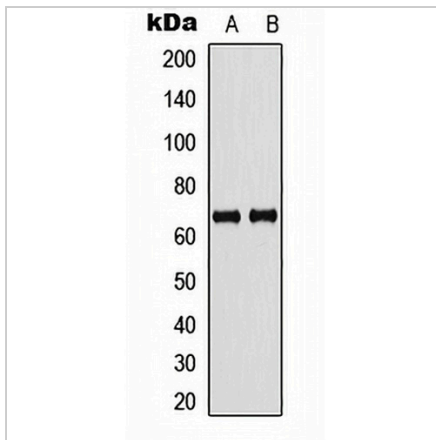
Description	Rabbit polyclonal antibody to GBP5
Specificity	Recognizes endogenous levels of GBP5 protein.
Antibody Type	Primary antibody
Immunogen	KLH-conjugated synthetic peptide encompassing a sequence within the center region of human GBP5. The exact sequence is proprietary.
Purification	The antibody was purified by immunogen affinity chromatography.
Molecular Weight	Predicted: 66 kD; Observed: 66 kD
Form/Buffer	Liquid in 0.42% Potassium phosphate, 0.87% Sodium chloride, pH 7.3, 30% glycerol, and 0.01% sodium azide.
Alternative Names	Guanylate-binding protein 5; GBP-TA antigen; GTP-binding protein 5; GBP-5; Guanine nucleotide-binding protein 5
Gene Symbol	GBP5
Entrez Gene	115362(Human)
SwissProt	Q96PP8(Human)

*AREX continuously optimizes our products. Webpage content may not reflect the latest updates. For inquiries, please contact info@arexbio.com or your local distributor.

*Clone Number, Reactivity, Source/Host and Clonality can be found in the product name and Key Features section above.

DATASHEET**GBP5 Rabbit Polyclonal Antibody**

CAT. NO. APA09894

DATA

Western blot analysis of GBP5 expression in human placenta (A), rat kidney (B) whole cell lysates. (Predicted band size: 66 kD; Observed band size: 66 kD)

STORAGE

Store at 4°C short term. For long term storage, store at -20°C, avoiding freeze/thaw cycles.

NOTE

For Research Use Only. Not for diagnostic, therapeutics, prophylactic or in vivo use.