

**DATASHEET**

**KIF2C (Phospho-S95) Rabbit Polyclonal Antibody**

CAT. NO. APA09942

**KEY FEATURES**

Target	KIF2C (Phospho-S95)	Source / Host	Rabbit
Reactivity	Human, Monkey	Clonality	Polyclonal
Applications	WB, IHC, IF/ICC	Conjugation	Unconjugated
Form / Buffer	Liquid in 0.42% Potassium phosphate, 0.87% Sodium chloride, pH 7.3, 30% glycerol, and 0.01% sodium azide.		Storage at -20°C

**BACKGROUND**

In complex with KIF18B, constitutes the major microtubule plus-end depolymerizing activity in mitotic cells . Regulates the turnover of microtubules at the kinetochore and functions in chromosome segregation during mitosis . Plays a role in chromosome congression and is required for the lateral to end-on conversion of the chromosome-microtubule attachment .

**APPLICATION**

To ensure optimal assay performance, AREX recommends conducting reagent titration tailored to each testing system for optimal detection results.

WB	1:500 - 1:1000
IHC	1:50 - 1:200
IF/ICC	1:100 - 1:500

\*Results are sample-specific. Please refer to your local assay conditions and test parameters for reference.

**PRODUCT OVERVIEW**

Description	Rabbit polyclonal antibody to KIF2C (Phospho-S95)
Specificity	Recognizes endogenous levels of KIF2C protein only when phosphorylated at S95.
Antibody Type	Primary antibody
Immunogen	KLH-conjugated synthetic phosphopeptide corresponding to residues surrounding S95 of human KIF2C protein. The exact sequence is proprietary.
Purification	The antibody was purified by immunogen affinity chromatography.
Molecular Weight	Predicted: 81 kD; Observed: 81 kD
Form/Buffer	Liquid in 0.42% Potassium phosphate, 0.87% Sodium chloride, pH 7.3, 30% glycerol, and 0.01% sodium azide.
Alternative Names	KNLSL6; Kinesin-like protein KIF2C; Kinesin-like protein 6; Mitotic centromere-associated kinesin; MCAK
Gene Symbol	KIF2C
Entrez Gene	11004(Human)
SwissProt	Q99661(Human)

\*AREX continuously optimizes our products. Webpage content may not reflect the latest updates. For inquiries, please contact [info@arexbio.com](mailto:info@arexbio.com) or your local distributor.

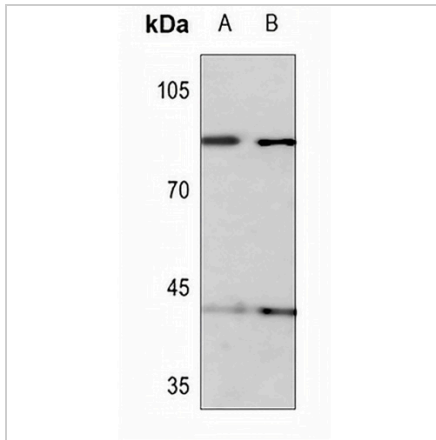
\*Clone Number, Reactivity, Source/Host and Clonality can be found in the product name and Key Features section above.

**DATASHEET**

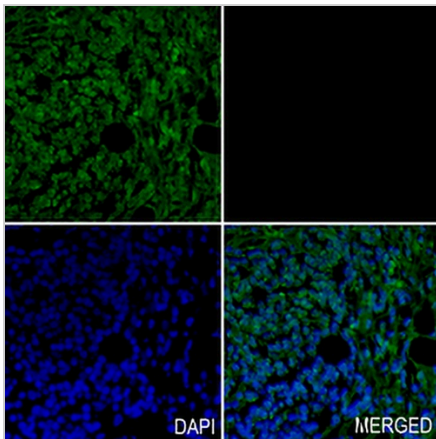
**KIF2C (Phospho-S95) Rabbit Polyclonal Antibody**

CAT. NO. APA09942

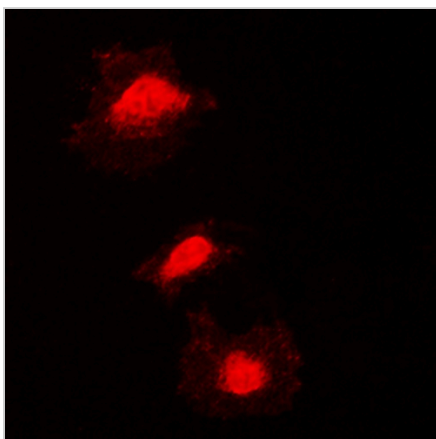
**DATA**



Western blot analysis of KIF2C (Phospho-S95) expression in H1688 (A), H446 (B) whole cell lysates. (Predicted band size: 81 kD; Observed band size: 81 kD)



Immunohistochemical analysis of KIF2C (Phospho-S95) Antibody staining in human carcinoma cancer formalin fixed paraffin embedded tissue section. The section was pre-treated using heat mediated antigen retrieval with sodium citrate buffer (pH 6.0). The section was then incubated with the antibody at room temperature and detected using an HRP conjugated compact polymer system. Tyramide-AREX® Fluor 488 (green) was used as the chromogen. The section was then counterstained with DAPI (blue).



Immunofluorescent analysis of KIF2C (Phospho-S95) staining in Jurkat cells. Formalin-fixed cells were permeabilized with 0.1% Triton X-100 in TBS for 5-10 minutes and blocked with 3% BSA-PBS for 30 minutes at room temperature. Cells were probed with the primary antibody in 3% BSA-PBS and incubated overnight at 4 °C in a hidified chamber. Cells were washed with PBST and incubated with a DyLight 594-conjugated secondary antibody (red) in PBS at room temperature in the dark.

**STORAGE**

Store at 4°C short term. For long term storage, store at -20°C, avoiding freeze/thaw cycles.

**NOTE**

For Research Use Only. Not for diagnostic, therapeutics, prophylactic or in vivo use.