

**DATASHEET**

**LYN (Phospho-Y397) Rabbit Polyclonal Antibody**

CAT. NO. APA09947

**KEY FEATURES**

|               |   |               |              |
|---------------|---|---------------|--------------|
| Target        | LYN (Phospho-Y397)  | Source / Host | Rabbit       |
| Reactivity    | Human, Mouse, Rat, Bovine, Pig, Sheep   | Clonality     | Polyclonal   |
| Applications  | WB, IHC, IF/ICC   | Conjugation   | Unconjugated |
| Form / Buffer | Liquid in 0.42% Potassium phosphate, 0.87% Sodium chloride, pH 7.3, 30% glycerol, and 0.01% sodium azide. | Storage       | at-20°C      |

**BACKGROUND**

Non-receptor tyrosine-protein kinase that transmits signals from cell surface receptors and plays an important role in the regulation of innate and adaptive immune responses, hematopoiesis, responses to growth factors and cytokines, integrin signaling, but also responses to DNA damage and genotoxic agents. Functions primarily as negative regulator, but can also function as activator, depending on the context. Required for the initiation of the B-cell response, but also for its down-regulation and termination. Plays an important role in the regulation of B-cell differentiation, proliferation, survival and apoptosis, and is important for immune self-tolerance.

**APPLICATION**

To ensure optimal assay performance, AREX recommends conducting reagent titration tailored to each testing system for optimal detection results.

|        |                |
|--------|----------------|
| WB     | 1:500 - 1:1000 |
| IHC    | 1:100 - 1:200  |
| IF/ICC | 1:100 - 1:500  |

\*Results are sample-specific. Please refer to your local assay conditions and test parameters for reference.

**PRODUCT OVERVIEW**

|                   |  |
|-------------------|--|
| Description       | Rabbit polyclonal antibody to LYN (Phospho-Y397)   |
| Specificity       | Recognizes endogenous levels of LYN protein only when phosphorylated at Y397.  |
| Antibody Type     | Primary antibody   |
| Immunogen         | KLH-conjugated synthetic phosphopeptide corresponding to residues surrounding Y397 of human LYN protein. The exact sequence is proprietary.                |
| Purification      | The antibody was purified by immunogen affinity chromatography.  |
| Molecular Weight  | Predicted: 58 kD; Observed: 58 kD  |
| Form/Buffer       | Liquid in 0.42% Potassium phosphate, 0.87% Sodium chloride, pH 7.3, 30% glycerol, and 0.01% sodium azide.  |
| Alternative Names | JTK8; Tyrosine-protein kinase Lyn; Lck/Yes-related novel protein tyrosine kinase; V-yes-1 Yamaguchi sarcoma viral related oncogene homolog; p53Lyn; p56Lyn |
| Gene Symbol       | LYN  |
| Entrez Gene       | 4067(Human); 17096(Mouse); 81515(Rat)  |
| SwissProt         | P07948(Human); P25911(Mouse); Q07014(Rat)  |

\*AREX continuously optimizes our products. Webpage content may not reflect the latest updates. For inquiries, please contact [info@arexbio.com](mailto:info@arexbio.com) or your local distributor.

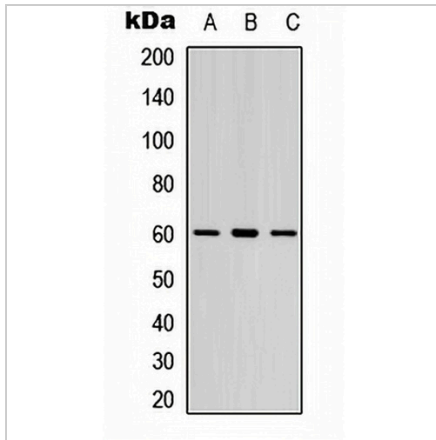
\*Clone Number, Reactivity, Source/Host and Clonality can be found in the product name and Key Features section above.

**DATASHEET**

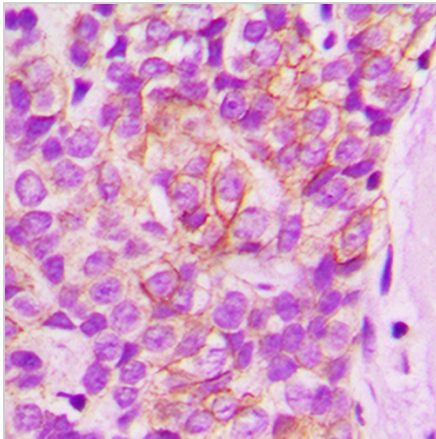
**LYN (Phospho-Y397) Rabbit Polyclonal Antibody**

CAT. NO. APA09947

**DATA**



Western blot analysis of LYN (Phospho-Y397) expression in Jurkat (A), human spleen (B), mouse lung (C) whole cell lysates. (Predicted band size: 58 kD; Observed band size: 58 kD)



Immunohistochemical analysis of LYN (Phospho-Y397) staining in human breast cancer formalin fixed paraffin embedded tissue section. The section was pre-treated using heat mediated antigen retrieval with sodium citrate buffer (pH 6.0). The section was then incubated with the antibody at room temperature and detected using an HRP conjugated compact polymer system. DAB was used as the chromogen. The section was then counterstained with haematoxylin and mounted with DPX.



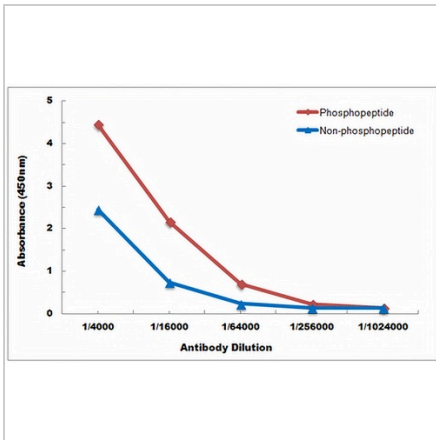
Immunofluorescent analysis of LYN (Phospho-Y397) staining in Jurkat cells. Formalin-fixed cells were permeabilized with 0.1% Triton X-100 in TBS for 5-10 minutes and blocked with 3% BSA-PBS for 30 minutes at room temperature. Cells were probed with the primary antibody in 3% BSA-PBS and incubated overnight at 4 °C in a humidified chamber. Cells were washed with PBST and incubated with a DyLight 594-conjugated secondary antibody (red) in PBS at room temperature in the dark. DAPI was used to stain the cell nuclei (blue).

**DATASHEET**

**LYN (Phospho-Y397) Rabbit Polyclonal Antibody**

**CAT. NO. APA09947**

**DATA (CONTINUED)**



Direct ELISA antibody dose-response curve using Anti-LYN (Phospho-Y397) Antibody. Antigen (Phosphopeptide and non-phosphopeptide) concentration is 5 ug/ml. Goat Anti-Rabbit IgG (H&L) - HRP was used as the secondary antibody, and signal was developed by TMB substrate.

**STORAGE**

Store at 4°C short term. For long term storage, store at -20°C, avoiding freeze/thaw cycles.

**NOTE**

For Research Use Only. Not for diagnostic, therapeutics, prophylactic or in vivo use.