

## DATASHEET

# P2Y8 Rabbit Polyclonal Antibody

CAT. NO. APA09990

### KEY FEATURES

Target	P2Y8	Source / Host	Rabbit
Reactivity	Human, Mouse, Rat	Clonality	Polyclonal
Applications	WB, IF/ICC	Conjugation	Unconjugated
Form / Buffer	Liquid in 0.42% Potassium phosphate, 0.87% Sodium chloride, pH 7.3, 30% glycerol, and 0.01% sodium azide.		Storage at -20°C

### BACKGROUND

G protein-coupled receptor for S-geranylgeranyl-glutathione (GGG), an endogenous metabolite present in lymphoid tissues. Couples the binding of GGG to the activation of GNA13 and downstream repression of AKT activation in lymphocytes defining their positioning and growth within lymphoid organs , an endogenous metabolite present in lymphoid tissues. Couples the binding of GGG to the activation of GNA13 and downstream repression of AKT activation in lymphocytes defining their positioning and growth within lymphoid organs .

### APPLICATION

To ensure optimal assay performance, AREX recommends conducting reagent titration tailored to each testing system for optimal detection results.

WB	1:500 - 1:1000
IF/ICC	1:100 - 1:500

\*Results are sample-specific. Please refer to your local assay conditions and test parameters for reference.

### PRODUCT OVERVIEW

Description	Rabbit polyclonal antibody to P2Y8
Specificity	Recognizes endogenous levels of P2Y8 protein.
Antibody Type	Primary antibody
Immunogen	KLH-conjugated synthetic peptide encompassing a sequence within the center region of human P2Y8. The exact sequence is proprietary.
Purification	The antibody was purified by immunogen affinity chromatography.
Molecular Weight	Predicted: 40 kD; Observed: 50 kD
Form/Buffer	Liquid in 0.42% Potassium phosphate, 0.87% Sodium chloride, pH 7.3, 30% glycerol, and 0.01% sodium azide.
Alternative Names	P2Y purinoceptor 8; P2Y8
Gene Symbol	P2RY8
Entrez Gene	286530(Human)
SwissProt	Q86VZ1(Human)

\*AREX continuously optimizes our products. Webpage content may not reflect the latest updates. For inquiries, please contact [info@arexbio.com](mailto:info@arexbio.com) or your local distributor.

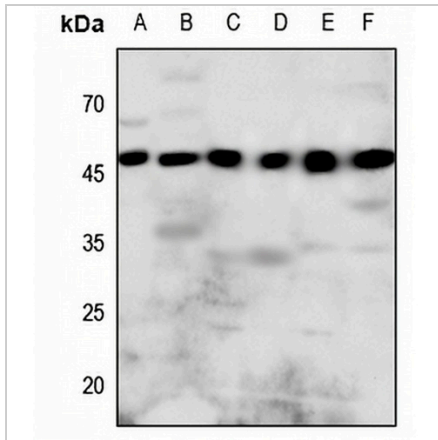
\*Clone Number, Reactivity, Source/Host and Clonality can be found in the product name and Key Features section above.

**DATASHEET**

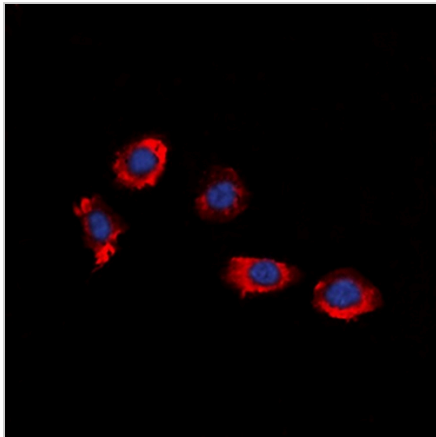
**P2Y8 Rabbit Polyclonal Antibody**

CAT. NO. APA09990

**DATA**



Western blot analysis of P2Y8 expression in Hela (A), mouse lung (B), mouse heart (C), mouse kidney (D), rat heart (E), rat kidney (F) whole cell lysates. (Predicted band size: 40 kD; Observed band size: 50 kD)



Immunofluorescent analysis of P2Y8 staining in HuvEc cells. Formalin-fixed cells were permeabilized with 0.1% Triton X-100 in TBS for 5-10 minutes and blocked with 3% BSA-PBS for 30 minutes at room temperature. Cells were probed with the primary antibody in 3% BSA-PBS and incubated overnight at 4 °C in a humidified chamber. Cells were washed with PBST and incubated with a DyLight 594-conjugated secondary antibody (red) in PBS at room temperature in the dark. DAPI was used to stain the cell nuclei (blue).

**STORAGE**

Store at 4°C short term. For long term storage, store at -20°C, avoiding freeze/thaw cycles.

**NOTE**

For Research Use Only. Not for diagnostic, therapeutics, prophylactic or in vivo use.