

DATASHEET

Zep-1 Rabbit Polyclonal Antibody

CAT. NO. APA10039

KEY FEATURES

Target	Zep-1	Source / Host	Rabbit
Reactivity	Human, Mouse, Rat	Clonality	Polyclonal
Applications	WB, IHC	Conjugation	Unconjugated
Form / Buffer	Liquid in 0.42% Potassium phosphate, 0.87% Sodium chloride, pH 7.3, 30% glycerol, and 0.01% sodium azide.		Storage at -20°C

BACKGROUND

Transcription factor that binds specifically to the RAS-responsive elements (RRE) of gene promoters of gene promoters . Represses the angiotensinogen gene . Negatively regulates the transcriptional activity of AR . Potentiates the transcriptional activity of NEUROD1 . Promotes brown adipocyte differentiation . May be involved in Ras/Raf-mediated cell differentiation by enhancing calcitonin expression .

APPLICATION

To ensure optimal assay performance, AREX recommends conducting reagent titration tailored to each testing system for optimal detection results.

WB	1:500 - 1:1000
IHC	1:100 - 1:200

*Results are sample-specific. Please refer to your local assay conditions and test parameters for reference.

PRODUCT OVERVIEW

Description	Rabbit polyclonal antibody to Zep-1
Specificity	Recognizes endogenous levels of Zep-1 protein.
Antibody Type	Primary antibody
Immunogen	KLH-conjugated synthetic peptide encompassing a sequence within the center region of human Zep-1. The exact sequence is proprietary.
Purification	The antibody was purified by immunogen affinity chromatography.
Molecular Weight	Predicted: 181 kD; Observed: 181 kD
Form/Buffer	Liquid in 0.42% Potassium phosphate, 0.87% Sodium chloride, pH 7.3, 30% glycerol, and 0.01% sodium azide.
Alternative Names	FINB; Ras-responsive element-binding protein 1; RREB-1; Finger protein in nuclear bodies; Raf-responsive zinc finger protein LZ321; Zinc finger motif enhancer-binding protein 1; Zep-1
Gene Symbol	RREB1
Entrez Gene	6239(Human); 68750(Mouse)
SwissProt	Q92766(Human); Q3UH06(Mouse)

*AREX continuously optimizes our products. Webpage content may not reflect the latest updates. For inquiries, please contact info@arexbio.com or your local distributor.

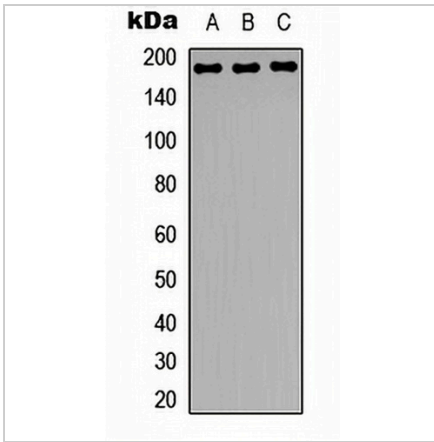
*Clone Number, Reactivity, Source/Host and Clonality can be found in the product name and Key Features section above.

DATASHEET

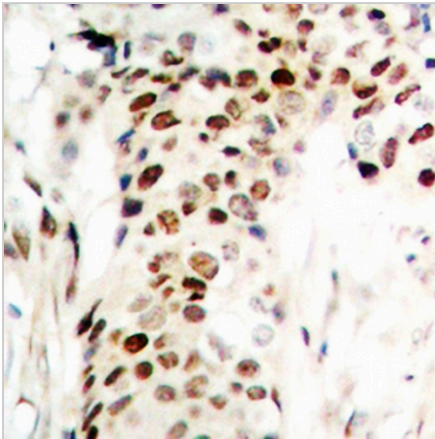
Zep-1 Rabbit Polyclonal Antibody

CAT. NO. APA10039

DATA



Western blot analysis of Zep-1 expression in HeLa (A), NIH3T3 (B), rat brain (C) whole cell lysates. (Predicted band size: 181 kD; Observed band size: 181 kD)



Immunohistochemical analysis of Zep-1 staining in human breast cancer formalin fixed paraffin embedded tissue section. The section was pre-treated using heat mediated antigen retrieval with sodium citrate buffer (pH 6.0). The section was then incubated with the antibody at room temperature and detected using an HRP conjugated compact polymer system. DAB was used as the chromogen. The section was then counterstained with haematoxylin and mounted with DPX.

STORAGE

Store at 4°C short term. For long term storage, store at -20°C, avoiding freeze/thaw cycles.

NOTE

For Research Use Only. Not for diagnostic, therapeutics, prophylactic or in vivo use.