

DATASHEET

MCT14 Rabbit Polyclonal Antibody

CAT. NO. APA10045

KEY FEATURES

Target	MCT14	Source / Host	Rabbit
Reactivity	Human, Mouse, Rat	Clonality	Polyclonal
Applications	WB	Conjugation	Unconjugated
Form / Buffer	Liquid in 0.42% Potassium phosphate, 0.87% Sodium chloride, pH 7.3, 30% glycerol, and 0.01% sodium azide.		Storage at -20°C

BACKGROUND

Proton-linked monocarboxylate transporter. May catalyze the transport of monocarboxylates across the plasma membrane.

APPLICATION

To ensure optimal assay performance, AREX recommends conducting reagent titration tailored to each testing system for optimal detection results.

WB	1:500 - 1:1000
----	----------------

*Results are sample-specific. Please refer to your local assay conditions and test parameters for reference.

PRODUCT OVERVIEW

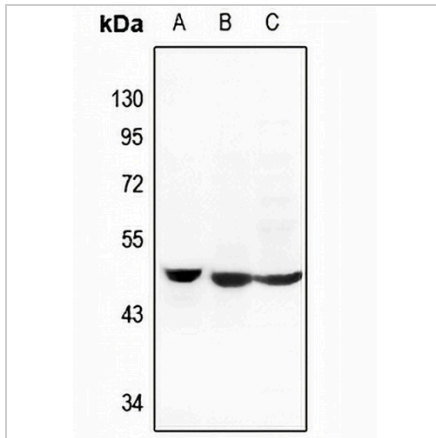
Description	Rabbit polyclonal antibody to MCT14
Specificity	Recognizes endogenous levels of MCT14 protein.
Antibody Type	Primary antibody
Immunogen	KLH-conjugated synthetic peptide encompassing a sequence within the center region of human MCT14. The exact sequence is proprietary.
Purification	The antibody was purified by immunogen affinity chromatography.
Molecular Weight	Predicted: 56 kD; Observed: 48 kD
Form/Buffer	Liquid in 0.42% Potassium phosphate, 0.87% Sodium chloride, pH 7.3, 30% glycerol, and 0.01% sodium azide.
Alternative Names	MCT14; Monocarboxylate transporter 14; MCT 14; Solute carrier family 16 member 14
Gene Symbol	SLC16A14
Entrez Gene	151473(Human); 71781(Mouse)
SwissProt	Q7RTX9(Human); Q8K1C7(Mouse)

*AREX continuously optimizes our products. Webpage content may not reflect the latest updates. For inquiries, please contact info@arexbio.com or your local distributor.

*Clone Number, Reactivity, Source/Host and Clonality can be found in the product name and Key Features section above.

DATASHEET**MCT14 Rabbit Polyclonal Antibody**

CAT. NO. APA10045

DATA

Western blot analysis of MCT14 expression in PC12 (A), HeLa (B), HEK293T (C) whole cell lysates. (Predicted band size: 56 kD; Observed band size: 48 kD)

STORAGE

Store at 4°C short term. For long term storage, store at -20°C, avoiding freeze/thaw cycles.

NOTE

For Research Use Only. Not for diagnostic, therapeutics, prophylactic or in vivo use.