

DATASHEET

SNAT2 Rabbit Polyclonal Antibody

CAT. NO. APA10046

KEY FEATURES

Target	SNAT2	Source / Host	Rabbit
Reactivity	Human, Mouse	Clonality	Polyclonal
Applications	WB	Conjugation	Unconjugated
Form / Buffer	Liquid in 0.42% Potassium phosphate, 0.87% Sodium chloride, pH 7.3, 30% glycerol, and 0.01% sodium azide.		Storage at -20°C

BACKGROUND

Symporter that cotransports neutral amino acids and sodium ions from the extracellular to the intracellular side of the cell membrane . The transport is pH-sensitive, Li(+)-intolerant, electrogenic, driven by the Na(+) electrochemical gradient and cotransports of neutral amino acids and sodium ions with a stoichiometry of 1:1. May function in the transport of amino acids at the blood-brain barrier . May function in the transport of amino acids in the supply of maternal nutrients to the fetus through the placenta . Maintains a key metabolic glutamine/glutamate balance underpinning retrograde signaling by dendritic release of the neurotransmitter glutamate .

APPLICATION

To ensure optimal assay performance, AREX recommends conducting reagent titration tailored to each testing system for optimal detection results.

WB	1:500 - 1:1000
----	----------------

*Results are sample-specific. Please refer to your local assay conditions and test parameters for reference.

PRODUCT OVERVIEW

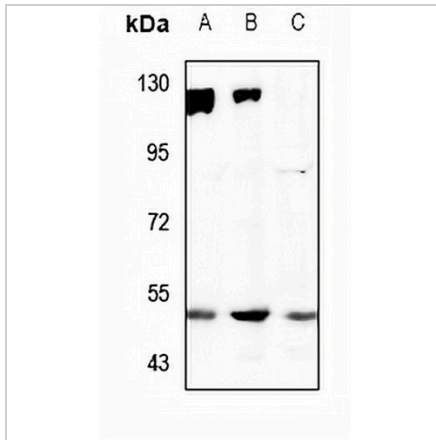
Description	Rabbit polyclonal antibody to SNAT2
Specificity	Recognizes endogenous levels of SNAT2 protein.
Antibody Type	Primary antibody
Immunogen	KLH-conjugated synthetic peptide encompassing a sequence within the center region of human SNAT2. The exact sequence is proprietary.
Purification	The antibody was purified by immunogen affinity chromatography.
Molecular Weight	Predicted: 56 kD; Observed: 50 kD
Form/Buffer	Liquid in 0.42% Potassium phosphate, 0.87% Sodium chloride, pH 7.3, 30% glycerol, and 0.01% sodium azide.
Alternative Names	ATA2; KIAA1382; SAT2; SNAT2; Sodium-coupled neutral amino acid transporter 2; Amino acid transporter A2; Protein 40-9-1; Solute carrier family 38 member 2; System A amino acid transporter 2; System A transporter 1; System N amino acid transporter 2
Gene Symbol	SLC38A2
Entrez Gene	54407(Human)
SwissProt	Q96QD8(Human)

*AREX continuously optimizes our products. Webpage content may not reflect the latest updates. For inquiries, please contact info@arexbio.com or your local distributor.

*Clone Number, Reactivity, Source/Host and Clonality can be found in the product name and Key Features section above.

DATASHEET**SNAT2 Rabbit Polyclonal Antibody**

CAT. NO. APA10046

DATA

Western blot analysis of SNAT2 expression in AML12 (A), HepG2 (B), U87MG (C) whole cell lysates. (Predicted band size: 56 kD; Observed band size: 50 kD)

STORAGE

Store at 4°C short term. For long term storage, store at -20°C, avoiding freeze/thaw cycles.

NOTE

For Research Use Only. Not for diagnostic, therapeutics, prophylactic or in vivo use.