

**DATASHEET**

**TNFAIP8L2 Rabbit Polyclonal Antibody**

CAT. NO. APA10067

**KEY FEATURES**

Target	TNFAIP8L2	Source / Host	Rabbit
Reactivity	Human, Mouse, Rat, Pig, Rabbit	Clonality	Polyclonal
Applications	WB	Conjugation	Unconjugated
Form / Buffer	Liquid in 0.42% Potassium phosphate, 0.87% Sodium chloride, pH 7.3, 30% glycerol, and 0.01% sodium azide.		Storage at -20°C

**BACKGROUND**

Acts as a negative regulator of innate and adaptive immunity by maintaining immune homeostasis . Plays a regulatory role in the Toll-like signaling pathway by determining the strength of LPS-induced signaling and gene expression . Inhibits TCR-mediated T-cell activation and negatively regulate T-cell function to prevent hyperresponsiveness . Also inhibits autolysosome formation via negatively modulating MTOR activation by interacting with RAC1 and promoting the disassociation of the RAC1-MTOR complex . Plays an essential role in NK-cell biology by acting as a checkpoint and displaying an expression pattern correlating with NK-cell maturation process and by negatively regulating NK-cell maturation and antitumor immunity .

**APPLICATION**

To ensure optimal assay performance, AREX recommends conducting reagent titration tailored to each testing system for optimal detection results.

WB	1:500 - 1:1000
----	----------------

\*Results are sample-specific. Please refer to your local assay conditions and test parameters for reference.

**PRODUCT OVERVIEW**

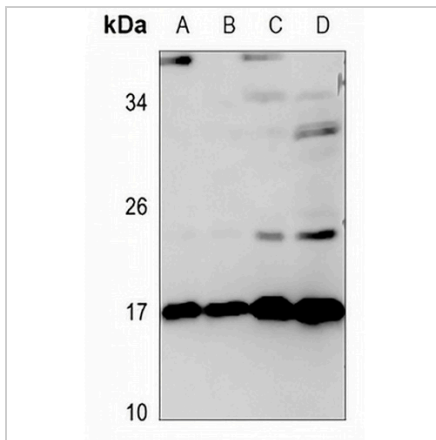
Description	Rabbit polyclonal antibody to TNFAIP8L2
Specificity	Recognizes endogenous levels of TNFAIP8L2 protein.
Antibody Type	Primary antibody
Immunogen	KLH-conjugated synthetic peptide encompassing a sequence within the center region of human TNFAIP8L2. The exact sequence is proprietary.
Purification	The antibody was purified by immunogen affinity chromatography.
Molecular Weight	Predicted: 20 kD; Observed: 17; 21 kD
Form/Buffer	Liquid in 0.42% Potassium phosphate, 0.87% Sodium chloride, pH 7.3, 30% glycerol, and 0.01% sodium azide.
Alternative Names	Tumor necrosis factor alpha-induced protein 8-like protein 2; TIPE2; TNF alpha-induced protein 8-like protein 2; TNFAIP8-like protein 2; Inflammation factor protein 20
Gene Symbol	TNFAIP8L2
Entrez Gene	79626(Human); 69769(Mouse); 310663(Rat)
SwissProt	Q6P589(Human); Q9D8Y7(Mouse); Q6AYJ8(Rat)

\*AREX continuously optimizes our products. Webpage content may not reflect the latest updates. For inquiries, please contact [info@arexbio.com](mailto:info@arexbio.com) or your local distributor.

\*Clone Number, Reactivity, Source/Host and Clonality can be found in the product name and Key Features section above.

**DATASHEET****TNFAIP8L2 Rabbit Polyclonal Antibody**

CAT. NO. APA10067

**DATA**

Western blot analysis of TNFAIP8L2 expression in mouse liver (A), mouse kidney (B), rat liver (C), rat kidney (D) whole cell lysates. (Predicted band size: 20 kD; Observed band size: 17; 21 kD)

**STORAGE**

Store at 4°C short term. For long term storage, store at -20°C, avoiding freeze/thaw cycles.

**NOTE**

For Research Use Only. Not for diagnostic, therapeutics, prophylactic or in vivo use.