

**DATASHEET**

**Topoisomerase 2 alpha Rabbit Polyclonal Antibody**

CAT. NO. APA10069

**KEY FEATURES**

Target	Topoisomerase 2 alpha	Source / Host	Rabbit
Reactivity	Human, Mouse, Pig	Clonality	Polyclonal
Applications	WB, IHC	Conjugation	Unconjugated
Form / Buffer	Liquid in 0.42% Potassium phosphate, 0.87% Sodium chloride, pH 7.3, 30% glycerol, and 0.01% sodium azide.		Storage at-20°C

**BACKGROUND**

Key decatenating enzyme that alters DNA topology by binding to two double-stranded DNA molecules, generating a double-stranded break in one of the strands, passing the intact strand through the broken strand, and religating the broken strand . May play a role in regulating the period length of BMAL1 transcriptional oscillation .

**APPLICATION**

To ensure optimal assay performance, AREX recommends conducting reagent titration tailored to each testing system for optimal detection results.

WB	1:500 - 1:1000
IHC	1:100 - 1:200

\*Results are sample-specific. Please refer to your local assay conditions and test parameters for reference.

**PRODUCT OVERVIEW**

Description	Rabbit polyclonal antibody to Topoisomerase 2 alpha
Specificity	Recognizes endogenous levels of Topoisomerase 2 alpha protein.
Antibody Type	Primary antibody
Immunogen	KLH-conjugated synthetic peptide encompassing a sequence within the center region of human Topoisomerase 2 alpha. The exact sequence is proprietary.
Purification	The antibody was purified by immunogen affinity chromatography.
Molecular Weight	Predicted: 174 kD; Observed: 190 kD
Form/Buffer	Liquid in 0.42% Potassium phosphate, 0.87% Sodium chloride, pH 7.3, 30% glycerol, and 0.01% sodium azide.
Alternative Names	TOP2; DNA topoisomerase 2-alpha; DNA topoisomerase II, alpha isozyme
Gene Symbol	TOP2A
Entrez Gene	7153(Human); 21973(Mouse)
SwissProt	P11388(Human); Q01320(Mouse)

\*AREX continuously optimizes our products. Webpage content may not reflect the latest updates. For inquiries, please contact [info@arexbio.com](mailto:info@arexbio.com) or your local distributor.

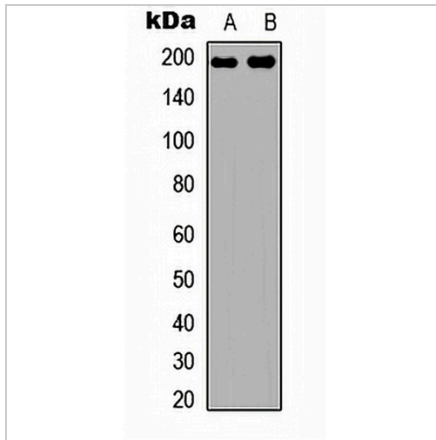
\*Clone Number, Reactivity, Source/Host and Clonality can be found in the product name and Key Features section above.

**DATASHEET**

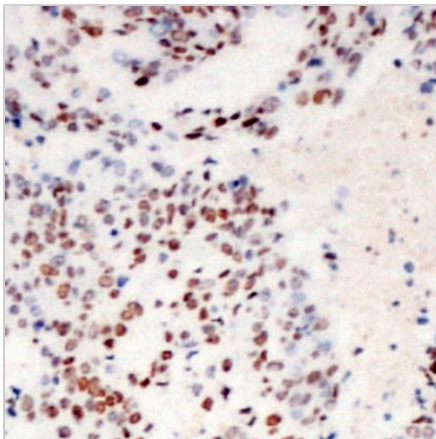
**Topoisomerase 2 alpha Rabbit Polyclonal Antibody**

CAT. NO. APA10069

**DATA**



Western blot analysis of Topoisomerase 2 alpha expression in HEK293T (A), NIH3T3 (B) whole cell lysates. (Predicted band size: 174 kD; Observed band size: 190 kD)



Immunohistochemical analysis of Topoisomerase 2 alpha staining in human breast cancer formalin fixed paraffin embedded tissue section. The section was pre-treated using heat mediated antigen retrieval with sodium citrate buffer (pH 6.0). The section was then incubated with the antibody at room temperature and detected using an HRP conjugated compact polymer system. DAB was used as the chromogen. The section was then counterstained with haematoxylin and mounted with DPX.

**STORAGE**

Store at 4°C short term. For long term storage, store at -20°C, avoiding freeze/thaw cycles.

**NOTE**

For Research Use Only. Not for diagnostic, therapeutics, prophylactic or in vivo use.