

## DATASHEET

# USP38 Rabbit Polyclonal Antibody

CAT. NO. APA10077

### KEY FEATURES

Target	USP38	Source / Host	Rabbit
Reactivity	Human, Mouse, Rat	Clonality	Polyclonal
Applications	WB	Conjugation	Unconjugated
Form / Buffer	Liquid in 0.42% Potassium phosphate, 0.87% Sodium chloride, pH 7.3, 30% glycerol, and 0.01% sodium azide.		Storage at -20°C

### BACKGROUND

Deubiquitinating enzyme that plays a role in various cellular processes, including DNA repair, cell cycle regulation, and immune response. Plays a role in the inhibition of type I interferon signaling by mediating the 'Lys-33' to 'Lys-48' ubiquitination transition of TBK1 leading to its degradation. Cleaves the ubiquitin chain from the histone demethylase LSD1/KDM1A and prevents it from degradation by the 26S proteasome, thus maintaining LSD1 protein level in cells. Plays a role in the DNA damage response by regulating the deacetylase activity of HDAC1. Mechanistically, removes the 'Lys-63'-linked ubiquitin chain promoting the deacetylase activity of HDAC1 in response to DNA damage.

### APPLICATION

To ensure optimal assay performance, AREX recommends conducting reagent titration tailored to each testing system for optimal detection results.

WB	1:500 - 1:1000
----	----------------

\*Results are sample-specific. Please refer to your local assay conditions and test parameters for reference.

### PRODUCT OVERVIEW

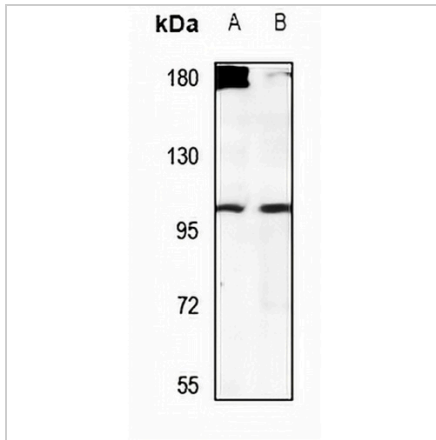
Description	Rabbit polyclonal antibody to USP38
Specificity	Recognizes endogenous levels of USP38 protein.
Antibody Type	Primary antibody
Immunogen	KLH-conjugated synthetic peptide encompassing a sequence within the center region of human USP38. The exact sequence is proprietary.
Purification	The antibody was purified by immunogen affinity chromatography.
Molecular Weight	Predicted: 116 kD; Observed: 117 kD
Form/Buffer	Liquid in 0.42% Potassium phosphate, 0.87% Sodium chloride, pH 7.3, 30% glycerol, and 0.01% sodium azide.
Alternative Names	KIAA1891; Ubiquitin carboxyl-terminal hydrolase 38; Deubiquitinating enzyme 38; HP43.8KD; Ubiquitin thioesterase 38; Ubiquitin-specific-processing protease 38
Gene Symbol	USP38
Entrez Gene	84640(Human); 74841(Mouse)
SwissProt	Q8NB14(Human); Q8BW70(Mouse)

\*AREX continuously optimizes our products. Webpage content may not reflect the latest updates. For inquiries, please contact [info@arexbio.com](mailto:info@arexbio.com) or your local distributor.

\*Clone Number, Reactivity, Source/Host and Clonality can be found in the product name and Key Features section above.

**DATASHEET****USP38 Rabbit Polyclonal Antibody**

CAT. NO. APA10077

**DATA****STORAGE**

Store at 4°C short term. For long term storage, store at -20°C, avoiding freeze/thaw cycles.

**NOTE**

For Research Use Only. Not for diagnostic, therapeutics, prophylactic or in vivo use.