

DATASHEET

VAMP1/2/3 Rabbit Polyclonal Antibody

CAT. NO. APA10078

KEY FEATURES

Target	VAMP1/2/3	Source / Host	Rabbit
Reactivity	Human, Mouse, Rat, Bovine	Clonality	Polyclonal
Applications	WB, IHC	Conjugation	Unconjugated
Form / Buffer	Liquid in 0.42% Potassium phosphate, 0.87% Sodium chloride, pH 7.3, 30% glycerol, and 0.01% sodium azide.		Storage at-20°C

BACKGROUND

Involved in the targeting and/or fusion of transport vesicles to their target membrane.

APPLICATION

To ensure optimal assay performance, AREX recommends conducting reagent titration tailored to each testing system for optimal detection results.

WB	1:500 - 1:1000
IHC	1:100 - 1:200

*Results are sample-specific. Please refer to your local assay conditions and test parameters for reference.

PRODUCT OVERVIEW

Description	Rabbit polyclonal antibody to VAMP1/2/3
Specificity	Recognizes endogenous levels of VAMP1/2/3 protein.
Antibody Type	Primary antibody
Immunogen	KLH-conjugated synthetic peptide encompassing a sequence within the center region of human VAMP1/2/3. The exact sequence is proprietary.
Purification	The antibody was purified by immunogen affinity chromatography.
Molecular Weight	Predicted: 12; Observed: 18 kD
Form/Buffer	Liquid in 0.42% Potassium phosphate, 0.87% Sodium chloride, pH 7.3, 30% glycerol, and 0.01% sodium azide.
Alternative Names	VAMP1; SYB1; Vesicle-associated membrane protein 1; VAMP-1; Synaptobrevin-1; VAMP2; SYB2; Vesicle-associated membrane protein 2; VAMP-2; Synaptobrevin-2; VAMP3; SYB3; Vesicle-associated membrane protein 3; VAMP-3; Cellubrevin; CEB; Synaptobrevin-3
Gene Symbol	VAMP1; VAMP2; VAMP3
Entrez Gene	6843; 6844; 9341(Human); 22317; 22318; 22319(Mouse); 25624; 24803; 29528(Rat)
SwissProt	P23763; P63027; Q15836(Human); Q62442; P63044; P63024(Mouse); Q63666; P63045; P63025(Rat)

*AREX continuously optimizes our products. Webpage content may not reflect the latest updates. For inquiries, please contact info@arexbio.com or your local distributor.

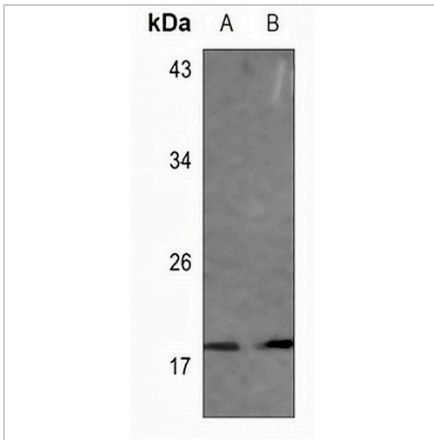
*Clone Number, Reactivity, Source/Host and Clonality can be found in the product name and Key Features section above.

DATASHEET

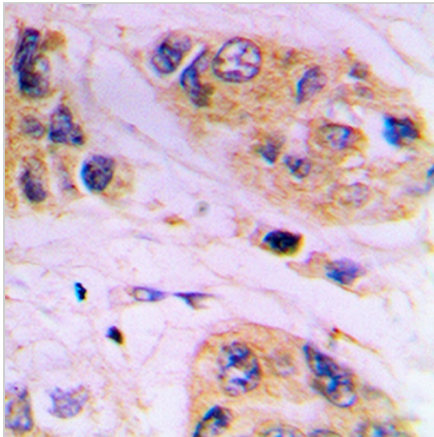
VAMP1/2/3 Rabbit Polyclonal Antibody

CAT. NO. APA10078

DATA



Western blot analysis of VAMP1/2/3 expression in mouse brain (A), rat brain (B) whole cell lysates. (Predicted band size: 12; 11 kD; Observed band size: 18 kD)



Immunohistochemical analysis of VAMP1/2/3 staining in human prostate cancer formalin fixed paraffin embedded tissue section. The section was pre-treated using heat mediated antigen retrieval with sodium citrate buffer (pH 6.0). The section was then incubated with the antibody at room temperature and detected using an HRP conjugated compact polymer system. DAB was used as the chromogen. The section was then counterstained with haematoxylin and mounted with DPX.

STORAGE

Store at 4°C short term. For long term storage, store at -20°C, avoiding freeze/thaw cycles.

NOTE

For Research Use Only. Not for diagnostic, therapeutics, prophylactic or in vivo use.