

**DATASHEET**

**ZC3H4 Rabbit Polyclonal Antibody**

CAT. NO. APA10083

**KEY FEATURES**

Target	ZC3H4	Source / Host	Rabbit
Reactivity	Human, Mouse	Clonality	Polyclonal
Applications	WB, IHC	Conjugation	Unconjugated
Form / Buffer	Liquid in 0.42% Potassium phosphate, 0.87% Sodium chloride, pH 7.3, 30% glycerol, and 0.01% sodium azide.		Storage at-20°C

**BACKGROUND**

RNA-binding protein that suppresses transcription of long non-coding RNAs (lncRNAs). lncRNAs are defined as transcripts more than 200 nucleotides that are not translated into protein. Together with WDR82, part of a transcription termination checkpoint that promotes transcription termination of lncRNAs and their subsequent degradation by the exosome. The transcription termination checkpoint is activated by the inefficiently spliced first exon of lncRNAs.

**APPLICATION**

To ensure optimal assay performance, AREX recommends conducting reagent titration tailored to each testing system for optimal detection results.

WB	1:500 - 1:1000
IHC	1:100 - 1:200

\*Results are sample-specific. Please refer to your local assay conditions and test parameters for reference.

**PRODUCT OVERVIEW**

Description	Rabbit polyclonal antibody to ZC3H4
Specificity	Recognizes endogenous levels of ZC3H4 protein.
Antibody Type	Primary antibody
Immunogen	KLH-conjugated synthetic peptide encompassing a sequence within the center region of human ZC3H4. The exact sequence is proprietary.
Purification	The antibody was purified by immunogen affinity chromatography.
Molecular Weight	Predicted: 140 kD; Observed: 140 kD
Form/Buffer	Liquid in 0.42% Potassium phosphate, 0.87% Sodium chloride, pH 7.3, 30% glycerol, and 0.01% sodium azide.
Alternative Names	C19orf7; KIAA1064; Zinc finger CCCH domain-containing protein 4
Gene Symbol	ZC3H4
Entrez Gene	23211(Human); 330474(Mouse)
SwissProt	Q9UPT8(Human); Q6ZPZ3(Mouse)

\*AREX continuously optimizes our products. Webpage content may not reflect the latest updates. For inquiries, please contact [info@arexbio.com](mailto:info@arexbio.com) or your local distributor.

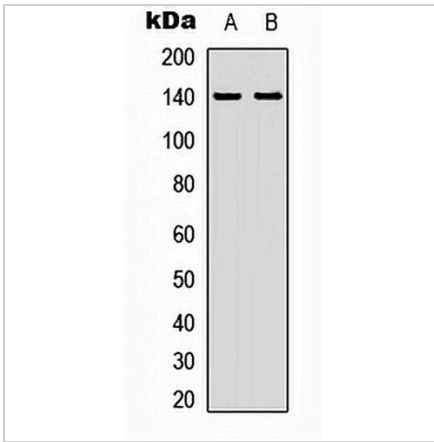
\*Clone Number, Reactivity, Source/Host and Clonality can be found in the product name and Key Features section above.

**DATASHEET**

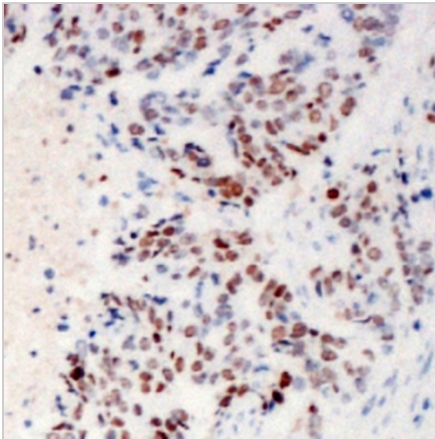
**ZC3H4 Rabbit Polyclonal Antibody**

CAT. NO. APA10083

**DATA**



Western blot analysis of ZC3H4 expression in HEK293T (A), HepG2 (B) whole cell lysates. (Predicted band size: 140 kD; Observed band size: 140 kD)



Immunohistochemical analysis of ZC3H4 staining in human breast cancer formalin fixed paraffin embedded tissue section. The section was pre-treated using heat mediated antigen retrieval with sodium citrate buffer (pH 6.0). The section was then incubated with the antibody at room temperature and detected using an HRP conjugated compact polymer system. DAB was used as the chromogen. The section was then counterstained with haematoxylin and mounted with DPX.

**STORAGE**

Store at 4°C short term. For long term storage, store at -20°C, avoiding freeze/thaw cycles.

**NOTE**

For Research Use Only. Not for diagnostic, therapeutics, prophylactic or in vivo use.