

**DATASHEET**

**ATP1A2 Rabbit Polyclonal Antibody**

CAT. NO. APA10095

**KEY FEATURES**

Target	ATP1A2	Source / Host	Rabbit
Reactivity	Human, Mouse, Rat, Bovine, Monkey, Pig	Clonality	Polyclonal
Applications	WB	Conjugation	Unconjugated
Form / Buffer	Liquid in 0.42% Potassium phosphate, 0.87% Sodium chloride, pH 7.3, 30% glycerol, and 0.01% sodium azide.		Storage at -20°C

**BACKGROUND**

This is the catalytic component of the active enzyme, which catalyzes the hydrolysis of ATP coupled with the exchange of sodium and potassium ions across the plasma membrane. This action creates the electrochemical gradient of sodium and potassium, providing the energy for active transport of various nutrients.

**APPLICATION**

To ensure optimal assay performance, AREX recommends conducting reagent titration tailored to each testing system for optimal detection results.

WB	1:500 - 1:1000
----	----------------

\*Results are sample-specific. Please refer to your local assay conditions and test parameters for reference.

**PRODUCT OVERVIEW**

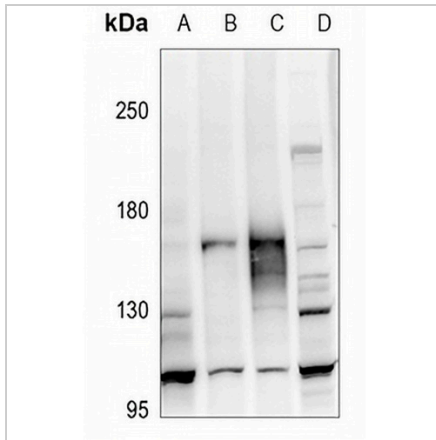
Description	Rabbit polyclonal antibody to ATP1A2
Specificity	Recognizes endogenous levels of ATP1A2 protein.
Antibody Type	Primary antibody
Immunogen	KLH-conjugated synthetic peptide encompassing a sequence within the C-term region of human ATP1A2. The exact sequence is proprietary.
Purification	The antibody was purified by immunogen affinity chromatography.
Molecular Weight	Predicted: 112 kD; Observed: 100 kD
Form/Buffer	Liquid in 0.42% Potassium phosphate, 0.87% Sodium chloride, pH 7.3, 30% glycerol, and 0.01% sodium azide.
Alternative Names	KIAA0778; Sodium/potassium-transporting ATPase subunit alpha-2; Na(+)/K(+) ATPase alpha-2 subunit; Sodium pump subunit alpha-2
Gene Symbol	ATP1A2
Entrez Gene	477(Human); 98660(Mouse); 24212(Rat)
SwissProt	P50993(Human); Q6PIE5(Mouse); P06686(Rat)

\*AREX continuously optimizes our products. Webpage content may not reflect the latest updates. For inquiries, please contact [info@arexbio.com](mailto:info@arexbio.com) or your local distributor.

\*Clone Number, Reactivity, Source/Host and Clonality can be found in the product name and Key Features section above.

**DATASHEET****ATP1A2 Rabbit Polyclonal Antibody**

CAT. NO. APA10095

**DATA**

Western blot analysis of ATP1A2 expression in HeLa (A), H1792 (B), Panc1 (C), AML12 (D) whole cell lysates. (Predicted band size: 112 kD; Observed band size: 100 kD)

**STORAGE**

Store at 4°C short term. For long term storage, store at -20°C, avoiding freeze/thaw cycles.

**NOTE**

For Research Use Only. Not for diagnostic, therapeutics, prophylactic or in vivo use.