

DATASHEET

Cytochrome P450 2D6 Rabbit Polyclonal Antibody

CAT. NO. APA10108

KEY FEATURES

Target	Cytochrome P450 2D6	Source / Host	Rabbit
Reactivity	Human, Mouse, Rat	Clonality	Polyclonal
Applications	WB, IF/ICC	Conjugation	Unconjugated
Form / Buffer	Liquid in 0.42% Potassium phosphate, 0.87% Sodium chloride, pH 7.3, 30% glycerol, and 0.01% sodium azide.		Storage at-20°C

BACKGROUND

A cytochrome P450 monooxygenase involved in the metabolism of fatty acids, steroids and retinoids . Mechanistically, uses molecular oxygen inserting one oxygen atom into a substrate, and reducing the second into a water molecule, with two electrons provided by NADPH via cytochrome P450 reductase (NADPH--hemoprotein reductase) . Catalyzes the epoxidation of double bonds of polyunsaturated fatty acids (PUFA) . Metabolizes endocannabinoid arachidonylethanolamide (anandamide) to 20-hydroxyeicosatetraenoic acid ethanolamide (20-HETE-EA) and 8,9-, 11,12-, and 14,15-epoxyeicosatrienoic acid ethanolamides (EpETE-EAs), potentially modulating endocannabinoid system signaling . Catalyzes the hydroxylation of carbon-hydrogen bonds.

APPLICATION

To ensure optimal assay performance, AREX recommends conducting reagent titration tailored to each testing system for optimal detection results.

WB	1:500 - 1:1000
IF/ICC	1:50 - 1:200

*Results are sample-specific. Please refer to your local assay conditions and test parameters for reference.

PRODUCT OVERVIEW

Description	Rabbit polyclonal antibody to Cytochrome P450 2D6
Specificity	Recognizes endogenous levels of Cytochrome P450 2D6 protein.
Antibody Type	Primary antibody
Immunogen	KLH-conjugated synthetic peptide encompassing a sequence within the center region of human Cytochrome P450 2D6. The exact sequence is proprietary.
Purification	The antibody was purified by immunogen affinity chromatography.
Molecular Weight	Predicted: 55 kD; Observed: 55 kD
Form/Buffer	Liquid in 0.42% Potassium phosphate, 0.87% Sodium chloride, pH 7.3, 30% glycerol, and 0.01% sodium azide.
Alternative Names	CYP2DL1; Cytochrome P450 2D6; CYP1D6; Cytochrome P450-DB1; Debrisoquine 4-hydroxylase
Gene Symbol	CYP2D6
Entrez Gene	1565(Human)
SwissProt	P10635(Human)

*AREX continuously optimizes our products. Webpage content may not reflect the latest updates. For inquiries, please contact info@arexbio.com or your local distributor.

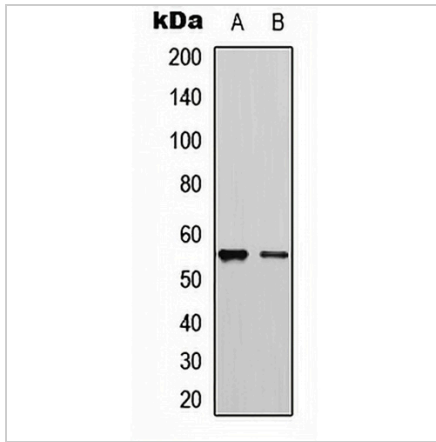
*Clone Number, Reactivity, Source/Host and Clonality can be found in the product name and Key Features section above.

DATASHEET

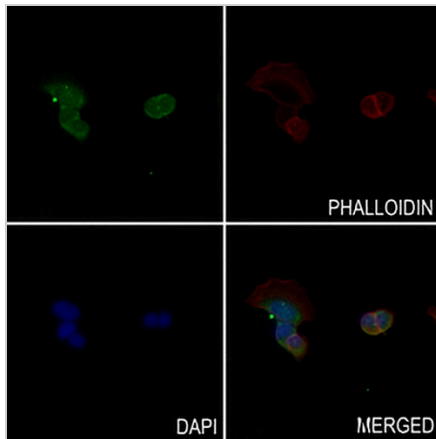
Cytochrome P450 2D6 Rabbit Polyclonal Antibody

CAT. NO. APA10108

DATA



Western blot analysis of Cytochrome P450 2D6 expression in HeLa (A), HEK293T (B) whole cell lysates. (Predicted band size: 55 kD; Observed band size: 55 kD)



Immunofluorescent analysis of Cytochrome P450 2D6 staining in SVHUC1 cells. Formalin-fixed cells were permeabilized with 0.1% Triton X-100 in TBS for 5-10 minutes and blocked with 3% BSA-PBS for 30 minutes at room temperature. Cells were probed with the primary antibody in 3% BSA-PBS and incubated overnight at 4 °C in a humidified chamber. Cells were washed with PBST and incubated with a AREX® Fluor 488 - conjugated secondary antibody (green) in PBS at room temperature in the dark. Phalloidin - AREX® Fluor 594 was used to stain Actin filaments (red). DAPI was used to stain the cell nuclei (blue).

STORAGE

Store at 4°C short term. For long term storage, store at -20°C, avoiding freeze/thaw cycles.

NOTE

For Research Use Only. Not for diagnostic, therapeutics, prophylactic or in vivo use.