

DATASHEET

CD278 Rabbit Polyclonal Antibody

CAT. NO. APA10125

KEY FEATURES

Target	CD278	Source / Host	Rabbit
Reactivity	Human, Mouse, Rat	Clonality	Polyclonal
Applications	WB	Conjugation	Unconjugated
Form / Buffer	Liquid in 0.42% Potassium phosphate, 0.87% Sodium chloride, pH 7.3, 30% glycerol, and 0.01% sodium azide.		Storage at -20°C

BACKGROUND

Stimulatory receptor expressed in activated or antigen-experienced T-cells that plays an important role in the immune response . Upon binding to its ligand ICOSL expressed on antigen presenting cells (APCs), delivers costimulatory signals that enhances all basic T-cell responses to a foreign antigen, namely proliferation, secretion of lymphokines including IL10, up-regulation of molecules that mediate cell-cell interaction, and effective help for antibody secretion by B-cells . Also acts as a costimulatory receptor critical for the differentiation of T follicular regulatory cells upon immune challenges such as viral infection . Mechanistically, potentiates TCR-induced calcium flux by augmenting PLCG1 activation and actin remodeling .

APPLICATION

To ensure optimal assay performance, AREX recommends conducting reagent titration tailored to each testing system for optimal detection results.

WB	1:500 - 1:1000
----	----------------

*Results are sample-specific. Please refer to your local assay conditions and test parameters for reference.

PRODUCT OVERVIEW

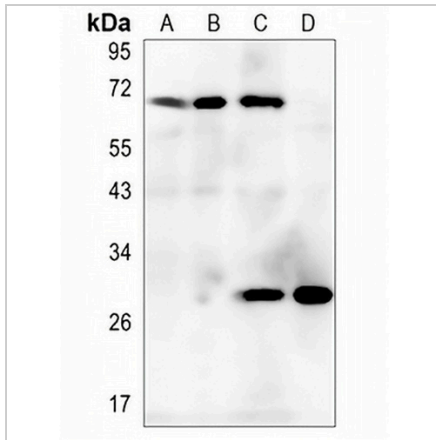
Description	Rabbit polyclonal antibody to CD278
Specificity	Recognizes endogenous levels of CD278 protein.
Antibody Type	Primary antibody
Immunogen	KLH-conjugated synthetic peptide encompassing a sequence within the center region of human CD278. The exact sequence is proprietary.
Purification	The antibody was purified by immunogen affinity chromatography.
Molecular Weight	Predicted: 22 kD; Observed: 27; 60 kD
Form/Buffer	Liquid in 0.42% Potassium phosphate, 0.87% Sodium chloride, pH 7.3, 30% glycerol, and 0.01% sodium azide.
Alternative Names	AILIM; Inducible T-cell costimulator; Activation-inducible lymphocyte immunomediatory molecule; CD278
Gene Symbol	ICOS
Entrez Gene	29851(Human); 54167(Mouse); 64545(Rat)
SwissProt	Q9Y6W8(Human); Q9WVS0(Mouse); Q9R1T7(Rat)

*AREX continuously optimizes our products. Webpage content may not reflect the latest updates. For inquiries, please contact info@arexbio.com or your local distributor.

*Clone Number, Reactivity, Source/Host and Clonality can be found in the product name and Key Features section above.

DATASHEET**CD278 Rabbit Polyclonal Antibody**

CAT. NO. APA10125

DATA

Western blot analysis of CD278 expression in EC9706 (A), Panc1 (B), mouse brain (C), mouse kidney (D) whole cell lysates. (Predicted band size: 22 kD; Observed band size: 27; 60 kD)

STORAGE

Store at 4°C short term. For long term storage, store at -20°C, avoiding freeze/thaw cycles.

NOTE

For Research Use Only. Not for diagnostic, therapeutics, prophylactic or in vivo use.