

DATASHEET

Sugen Kinase 269 Rabbit Polyclonal Antibody

CAT. NO. APA10142

KEY FEATURES

Target	Sugen Kinase 269	Source / Host	Rabbit
Reactivity	Human, Mouse	Clonality	Polyclonal
Applications	WB	Conjugation	Unconjugated
Form / Buffer	Liquid in 0.42% Potassium phosphate, 0.87% Sodium chloride, pH 7.3, 30% glycerol, and 0.01% sodium azide.		Storage at -20°C

BACKGROUND

Probable catalytically inactive kinase. Scaffolding protein that regulates the cytoskeleton to control cell spreading and migration by modulating focal adhesion dynamics . Acts as a scaffold for mediating EGFR signaling .

APPLICATION

To ensure optimal assay performance, AREX recommends conducting reagent titration tailored to each testing system for optimal detection results.

WB	1:500 - 1:1000
----	----------------

*Results are sample-specific. Please refer to your local assay conditions and test parameters for reference.

PRODUCT OVERVIEW

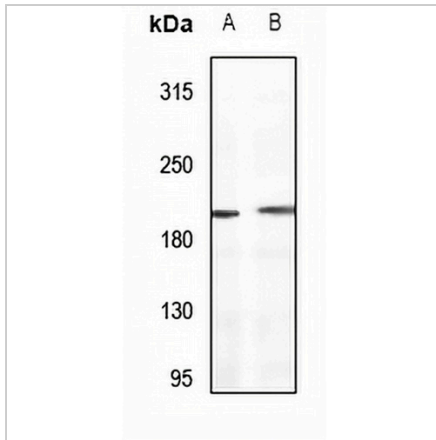
Description	Rabbit polyclonal antibody to Sugen Kinase 269
Specificity	Recognizes endogenous levels of Sugen Kinase 269 protein.
Antibody Type	Primary antibody
Immunogen	KLH-conjugated synthetic peptide encompassing a sequence within the N-term region of human Sugen Kinase 269. The exact sequence is proprietary.
Purification	The antibody was purified by immunogen affinity chromatography.
Molecular Weight	Predicted: 193 kD; Observed: 193 kD
Form/Buffer	Liquid in 0.42% Potassium phosphate, 0.87% Sodium chloride, pH 7.3, 30% glycerol, and 0.01% sodium azide.
Alternative Names	KIAA2002; Pseudopodium-enriched atypical kinase 1; Sugen kinase 269; Tyrosine-protein kinase SgK269
Gene Symbol	PEAK1
Entrez Gene	79834(Human); 244895(Mouse)
SwissProt	Q9H792(Human); Q69Z38(Mouse)

*AREX continuously optimizes our products. Webpage content may not reflect the latest updates. For inquiries, please contact info@arexbio.com or your local distributor.

*Clone Number, Reactivity, Source/Host and Clonality can be found in the product name and Key Features section above.

DATASHEET**Sugen Kinase 269 Rabbit Polyclonal Antibody**

CAT. NO. APA10142

DATA

Western blot analysis of Sugden Kinase 269 expression in HEK293T (A), LO2 (B) whole cell lysates. (Predicted band size: 193 kD; Observed band size: 193 kD)

STORAGE

Store at 4°C short term. For long term storage, store at -20°C, avoiding freeze/thaw cycles.

NOTE

For Research Use Only. Not for diagnostic, therapeutics, prophylactic or in vivo use.