

DATASHEET

TTC23 Rabbit Polyclonal Antibody

CAT. NO. APA10154

KEY FEATURES

Target	TTC23	Source / Host	Rabbit
Reactivity	Human, Mouse, Rat, Monkey	Clonality	Polyclonal
Applications	WB	Conjugation	Unconjugated
Form / Buffer	Liquid in 0.42% Potassium phosphate, 0.87% Sodium chloride, pH 7.3, 30% glycerol, and 0.01% sodium azide.		Storage at-20°C

BACKGROUND

Participates positively in the ciliary Hedgehog (Hh) signaling.

APPLICATION

To ensure optimal assay performance, AREX recommends conducting reagent titration tailored to each testing system for optimal detection results.

WB	1:500 - 1:1000
----	----------------

*Results are sample-specific. Please refer to your local assay conditions and test parameters for reference.

PRODUCT OVERVIEW

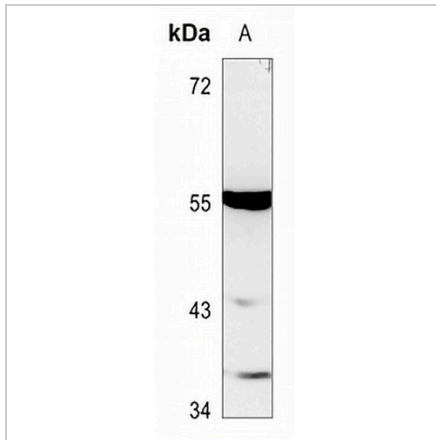
Description	Rabbit polyclonal antibody to TTC23
Specificity	Recognizes endogenous levels of TTC23 protein.
Antibody Type	Primary antibody
Immunogen	KLH-conjugated synthetic peptide encompassing a sequence within the C-term region of human TTC23. The exact sequence is proprietary.
Purification	The antibody was purified by immunogen affinity chromatography.
Molecular Weight	Predicted: 50 kD; Observed: 55 kD
Form/Buffer	Liquid in 0.42% Potassium phosphate, 0.87% Sodium chloride, pH 7.3, 30% glycerol, and 0.01% sodium azide.
Alternative Names	Tetratricopeptide repeat protein 23; TPR repeat protein 23; Cervical cancer proto-oncogene 8 protein; HCC-8
Gene Symbol	TTC23
Entrez Gene	64927(Human); 67009(Mouse); 308708(Rat)
SwissProt	Q5W5X9(Human); Q8CHY7(Mouse); Q4V7F0(Rat)

*AREX continuously optimizes our products. Webpage content may not reflect the latest updates. For inquiries, please contact info@arexbio.com or your local distributor.

*Clone Number, Reactivity, Source/Host and Clonality can be found in the product name and Key Features section above.

DATASHEET**TTC23 Rabbit Polyclonal Antibody**

CAT. NO. APA10154

DATA

Western blot analysis of TTC23 expression in rat liver (A) whole cell lysates. (Predicted band size: 50 kD; Observed band size: 55 kD)

STORAGE

Store at 4°C short term. For long term storage, store at -20°C, avoiding freeze/thaw cycles.

NOTE

For Research Use Only. Not for diagnostic, therapeutics, prophylactic or in vivo use.