

**DATASHEET**

**ZFP36L2 Rabbit Polyclonal Antibody**

CAT. NO. APA10179

**KEY FEATURES**

|               |   |               |                     |
|---------------|---|---------------|---------------------|
| Target        | ZFP36L2   | Source / Host | Rabbit              |
| Reactivity    | Human, Mouse, Bovine  | Clonality     | Polyclonal          |
| Applications  | WB, IHC   | Conjugation   | Unconjugated        |
| Form / Buffer | Liquid in 0.42% Potassium phosphate, 0.87% Sodium chloride, pH 7.3, 30% glycerol, and 0.01% sodium azide. |               | Storage<br>at -20°C |

**BACKGROUND**

Zinc-finger RNA-binding protein that destabilizes several cytoplasmic AU-rich element (ARE)-containing mRNA transcripts by promoting their poly(A) tail removal or deadenylation, and hence provide a mechanism for attenuating protein synthesis - containing mRNA transcripts by promoting their poly(A) tail removal or deadenylation, and hence provide a mechanism for attenuating protein synthesis . Acts as a 3'-untranslated region (UTR) ARE mRNA-binding adapter protein to communicate signaling events to the mRNA decay machinery . Functions by recruiting the CCR4-NOT deadenylase complex and probably other components of the cytoplasmic RNA decay machinery to the bound ARE-containing mRNAs, and hence promotes ARE-mediated mRNA deadenylation and decay processes .

**APPLICATION**

To ensure optimal assay performance, AREX recommends conducting reagent titration tailored to each testing system for optimal detection results.

|     |                |
|-----|----------------|
| WB  | 1:500 - 1:1000 |
| IHC | 1:100 - 1:200  |

\*Results are sample-specific. Please refer to your local assay conditions and test parameters for reference.

**PRODUCT OVERVIEW**

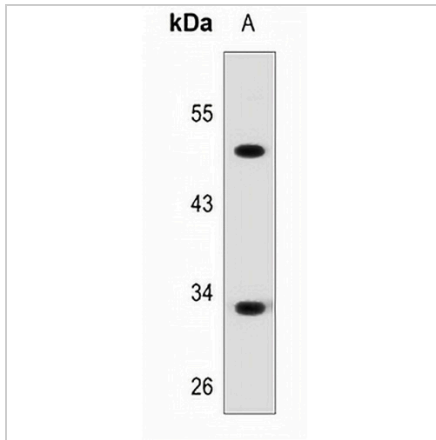
|                   |   |
|-------------------|---|
| Description       | Rabbit polyclonal antibody to ZFP36L2   |
| Specificity       | Recognizes endogenous levels of ZFP36L2 protein.  |
| Antibody Type     | Primary antibody  |
| Immunogen         | KLH-conjugated synthetic peptide encompassing a sequence within the center region of human ZFP36L2. The exact sequence is proprietary.                        |
| Purification      | The antibody was purified by immunogen affinity chromatography.   |
| Molecular Weight  | Predicted: 51 kD; Observed: 51 kD   |
| Form/Buffer       | Liquid in 0.42% Potassium phosphate, 0.87% Sodium chloride, pH 7.3, 30% glycerol, and 0.01% sodium azide.   |
| Alternative Names | BRF2; ERF2; RNF162C; TIS11D; Zinc finger protein 36, C3H1 type-like 2; ZFP36-like 2; Butyrate response factor 2; EGF-response factor 2; ERF-2; Protein TIS11D |
| Gene Symbol       | ZFP36L2   |
| Entrez Gene       | 678(Human); 12193(Mouse)  |
| SwissProt         | P47974(Human); P23949(Mouse)  |

\*AREX continuously optimizes our products. Webpage content may not reflect the latest updates. For inquiries, please contact [info@arexbio.com](mailto:info@arexbio.com) or your local distributor.

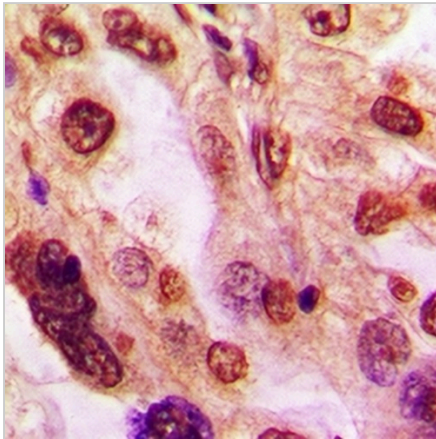
\*Clone Number, Reactivity, Source/Host and Clonality can be found in the product name and Key Features section above.

**DATASHEET****ZFP36L2 Rabbit Polyclonal Antibody**

CAT. NO. APA10179

**DATA**

Western blot analysis of ZFP36L2 expression in HepG2 (A) whole cell lysates. (Predicted band size: 51 kD; Observed band size: 51 kD)



Immunohistochemical analysis of ZFP36L2 staining in human lung cancer formalin fixed paraffin embedded tissue section. The section was pre-treated using heat mediated antigen retrieval with sodium citrate buffer (pH 6.0). The section was then incubated with the antibody at room temperature and detected using an HRP conjugated compact polymer system. DAB was used as the chromogen. The section was then counterstained with haematoxylin and mounted with DPX.

**STORAGE**

Store at 4°C short term. For long term storage, store at -20°C, avoiding freeze/thaw cycles.

**NOTE**

For Research Use Only. Not for diagnostic, therapeutics, prophylactic or in vivo use.