

DATASHEET

MRPL41 Rabbit Polyclonal Antibody

CAT. NO. APA10199

KEY FEATURES

Target	MRPL41	Source / Host	Rabbit
Reactivity	Human	Clonality	Polyclonal
Applications	WB, IHC	Conjugation	Unconjugated
Form / Buffer	Liquid in 0.42% Potassium phosphate, 0.87% Sodium chloride, pH 7.3, 30% glycerol, and 0.01% sodium azide.		Storage at-20°C

BACKGROUND

Component of the mitochondrial ribosome large subunit . Also involved in apoptosis and cell cycle . Enhances p53/TP53 stability, thereby contributing to p53/TP53-induced apoptosis in response to growth-inhibitory condition. Enhances p53/TP53 translocation to the mitochondria. Has the ability to arrest the cell cycle at the G1 phase, possibly by stabilizing the CDKN1A and CDKN1B (p27Kip1) proteins .

APPLICATION

To ensure optimal assay performance, AREX recommends conducting reagent titration tailored to each testing system for optimal detection results.

WB	1:500 - 1:1000
IHC	1:100 - 1:200

*Results are sample-specific. Please refer to your local assay conditions and test parameters for reference.

PRODUCT OVERVIEW

Description	Rabbit polyclonal antibody to MRPL41
Specificity	Recognizes endogenous levels of MRPL41 protein.
Antibody Type	Primary antibody
Immunogen	KLH-conjugated synthetic peptide encompassing a sequence within the center region of human MRPL41. The exact sequence is proprietary.
Purification	The antibody was purified by immunogen affinity chromatography.
Molecular Weight	Predicted: 15 kD; Observed: 15 kD
Form/Buffer	Liquid in 0.42% Potassium phosphate, 0.87% Sodium chloride, pH 7.3, 30% glycerol, and 0.01% sodium azide.
Alternative Names	BMRP; MRPL27; RPML27; 39S ribosomal protein L41 mitochondrial; L41mt; MRP-L41; 39S ribosomal protein L27 homolog; Bcl-2-interacting mitochondrial ribosomal protein L41; Cell proliferation-inducing gene 3 protein; MRP-L27 homolog
Gene Symbol	MRPL41
Entrez Gene	64975(Human)
SwissProt	Q8IXM3(Human)

*AREX continuously optimizes our products. Webpage content may not reflect the latest updates. For inquiries, please contact info@arex.bio or your local distributor.

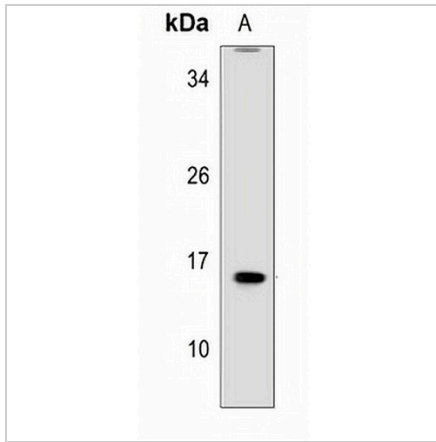
*Clone Number, Reactivity, Source/Host and Clonality can be found in the product name and Key Features section above.

DATASHEET

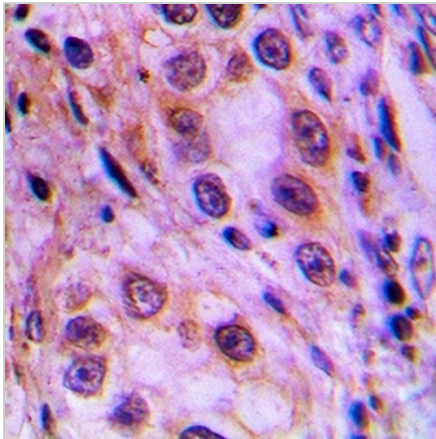
MRPL41 Rabbit Polyclonal Antibody

CAT. NO. APA10199

DATA



Western blot analysis of MRPL41 expression in human liver (A) whole cell lysates. (Predicted band size: 15 kD; Observed band size: 15 kD)



Immunohistochemical analysis of MRPL41 staining in human lung cancer formalin fixed paraffin embedded tissue section. The section was pre-treated using heat mediated antigen retrieval with sodium citrate buffer (pH 6.0). The section was then incubated with the antibody at room temperature and detected using an HRP conjugated compact polymer system. DAB was used as the chromogen. The section was then counterstained with haematoxylin and mounted with DPX.

STORAGE

Store at 4°C short term. For long term storage, store at -20°C, avoiding freeze/thaw cycles.

NOTE

For Research Use Only. Not for diagnostic, therapeutics, prophylactic or in vivo use.