

DATASHEET

ACSS1 Rabbit Polyclonal Antibody

CAT. NO. APA10204

KEY FEATURES

| | | | |
|---------------|---|---------------|---------------------|
| Target | ACSS1 | Source / Host | Rabbit |
| Reactivity | Human, Mouse, Rat, Bovine, Monkey | Clonality | Polyclonal |
| Applications | WB, IHC | Conjugation | Unconjugated |
| Form / Buffer | Liquid in 0.42% Potassium phosphate, 0.87% Sodium chloride, pH 7.3, 30% glycerol, and 0.01% sodium azide. | | Storage at -20°C |

BACKGROUND

Catalyzes the synthesis of acetyl-CoA from short-chain fatty acids . Acetate is the preferred substrate . Can also utilize propionate with a much lower affinity . Provides acetyl-CoA that is utilized mainly for oxidation under ketogenic conditions . Involved in thermogenesis under ketogenic conditions, using acetate as a vital fuel when carbohydrate availability is insufficient .

APPLICATION

To ensure optimal assay performance, AREX recommends conducting reagent titration tailored to each testing system for optimal detection results.

| | |
|-----|----------------|
| WB | 1:500 - 1:1000 |
| IHC | 1:100 - 1:200 |

*Results are sample-specific. Please refer to your local assay conditions and test parameters for reference.

PRODUCT OVERVIEW

| | |
|-------------------|--|
| Description | Rabbit polyclonal antibody to ACSS1 |
| Specificity | Recognizes endogenous levels of ACSS1 protein. |
| Antibody Type | Primary antibody |
| Immunogen | KLH-conjugated synthetic peptide encompassing a sequence within the C-term region of human ACSS1. The exact sequence is proprietary. |
| Purification | The antibody was purified by immunogen affinity chromatography. |
| Molecular Weight | Predicted: 74 kD; Observed: 75 kD |
| Form/Buffer | Liquid in 0.42% Potassium phosphate, 0.87% Sodium chloride, pH 7.3, 30% glycerol, and 0.01% sodium azide. |
| Alternative Names | ACAS2L; KIAA1846; Acetyl-coenzyme A synthetase 2-like mitochondrial; Acetate--CoA ligase 2; Acetyl-CoA synthetase 2; AceCS2; Acyl-CoA synthetase short-chain family member 1 |
| Gene Symbol | ACSS1 |
| Entrez Gene | 84532(Human); 68738(Mouse) |
| SwissProt | Q9NUB1(Human); Q99NB1(Mouse) |

*AREX continuously optimizes our products. Webpage content may not reflect the latest updates. For inquiries, please contact info@arexbio.com or your local distributor.

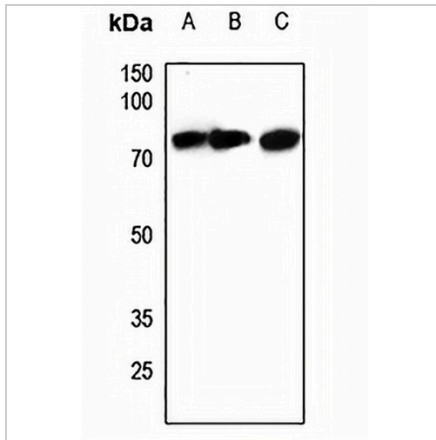
*Clone Number, Reactivity, Source/Host and Clonality can be found in the product name and Key Features section above.

DATASHEET

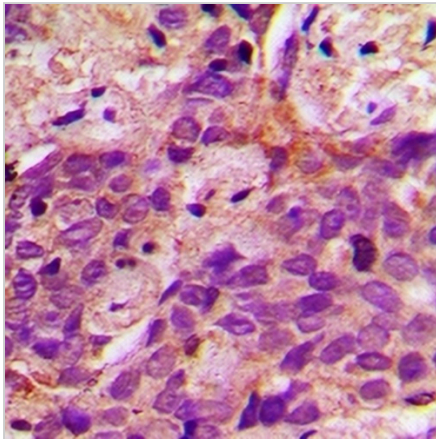
ACSS1 Rabbit Polyclonal Antibody

CAT. NO. APA10204

DATA



Western blot analysis of ACSS1 expression in H446 (A), mouse testis (B), mouse kidney (C) whole cell lysates. (Predicted band size: 74 kD; Observed band size: 75 kD)



Immunohistochemical analysis of ACSS1 staining in human prostate cancer formalin fixed paraffin embedded tissue section. The section was pre-treated using heat mediated antigen retrieval with sodium citrate buffer (pH 6.0). The section was then incubated with the antibody at room temperature and detected using an HRP conjugated compact polymer system. DAB was used as the chromogen. The section was then counterstained with haematoxylin and mounted with DPX.

STORAGE

Store at 4°C short term. For long term storage, store at -20°C, avoiding freeze/thaw cycles.

NOTE

For Research Use Only. Not for diagnostic, therapeutics, prophylactic or in vivo use.