

**DATASHEET**

**CEP78 Rabbit Polyclonal Antibody**

CAT. NO. APA10210

**KEY FEATURES**

Target	CEP78	Source / Host	Rabbit
Reactivity	Human, Mouse, Rat	Clonality	Polyclonal
Applications	WB, IHC	Conjugation	Unconjugated
Form / Buffer	Liquid in 0.42% Potassium phosphate, 0.87% Sodium chloride, pH 7.3, 30% glycerol, and 0.01% sodium azide.		Storage at -20°C

**BACKGROUND**

Centriole wall protein that localizes to mature centrioles and regulates centriole and cilia biogenesis . Involved in centrosome duplication: required for efficient PLK4 centrosomal localization and PLK4-induced overduplication of centrioles . Involved in cilium biogenesis and controls cilium length . Acts as a regulator of protein stability by preventing ubiquitination of centrosomal proteins, such as CCP110 and tektins . Associates with the EDVP complex, preventing ubiquitination and degradation of CCP110 . Promotes deubiquitination of tektin proteins (TEKT1, TEKT2, TEKT3, TEKT4 and TEKT5) via its interaction with USP16 .

**APPLICATION**

To ensure optimal assay performance, AREX recommends conducting reagent titration tailored to each testing system for optimal detection results.

WB	1:500 - 1:1000
IHC	1:100 - 1:200

\*Results are sample-specific. Please refer to your local assay conditions and test parameters for reference.

**PRODUCT OVERVIEW**

Description	Rabbit polyclonal antibody to CEP78
Specificity	Recognizes endogenous levels of CEP78 protein.
Antibody Type	Primary antibody
Immunogen	KLH-conjugated synthetic peptide encompassing a sequence within the center region of human CEP78. The exact sequence is proprietary.
Purification	The antibody was purified by immunogen affinity chromatography.
Molecular Weight	Predicted: 76 kD; Observed: 78 kD
Form/Buffer	Liquid in 0.42% Potassium phosphate, 0.87% Sodium chloride, pH 7.3, 30% glycerol, and 0.01% sodium azide.
Alternative Names	C9orf81; Centrosomal protein of 78 kDa; Cep78
Gene Symbol	CEP78
Entrez Gene	84131(Human)
SwissProt	Q5JTW2(Human)

\*AREX continuously optimizes our products. Webpage content may not reflect the latest updates. For inquiries, please contact [info@arexbio.com](mailto:info@arexbio.com) or your local distributor.

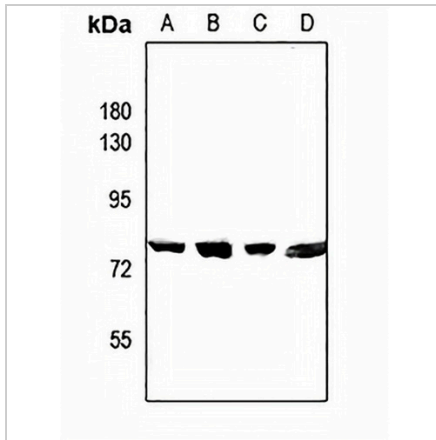
\*Clone Number, Reactivity, Source/Host and Clonality can be found in the product name and Key Features section above.

**DATASHEET**

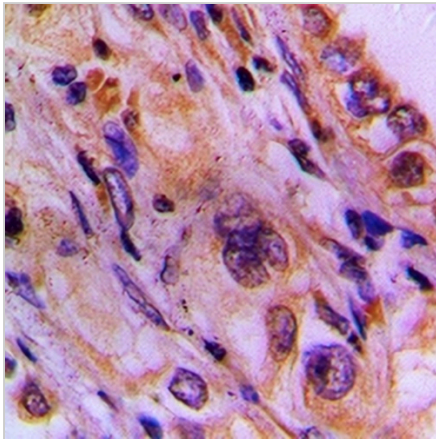
**CEP78 Rabbit Polyclonal Antibody**

CAT. NO. APA10210

**DATA**



Western blot analysis of CEP78 expression in COS7 (A), HEK293T (B), CT26 (C), H9C2 (D) whole cell lysates. (Predicted band size: 76 kD; Observed band size: 78 kD)



Immunohistochemical analysis of CEP78 staining in human lung cancer formalin fixed paraffin embedded tissue section. The section was pre-treated using heat mediated antigen retrieval with sodium citrate buffer (pH 6.0). The section was then incubated with the antibody at room temperature and detected using an HRP conjugated compact polymer system. DAB was used as the chromogen. The section was then counterstained with haematoxylin and mounted with DPX.

**STORAGE**

Store at 4°C short term. For long term storage, store at -20°C, avoiding freeze/thaw cycles.

**NOTE**

For Research Use Only. Not for diagnostic, therapeutics, prophylactic or in vivo use.