

DATASHEET

GHITM Rabbit Polyclonal Antibody

CAT. NO. APA10217

KEY FEATURES

Target	GHITM	Source / Host	Rabbit
Reactivity	Human, Mouse, Rat	Clonality	Polyclonal
Applications	WB	Conjugation	Unconjugated
Form / Buffer	Liquid in 0.42% Potassium phosphate, 0.87% Sodium chloride, pH 7.3, 30% glycerol, and 0.01% sodium azide.		Storage at-20°C

BACKGROUND

Plays an important role in maintenance of mitochondrial morphology and in mediating either calcium or potassium/proton antiport . Mediates proton-dependent calcium efflux from mitochondrion . Also functions as an electroneutral mitochondrial proton/potassium exchanger . Required for the mitochondrial tubular network and cristae organization . Involved in apoptotic release of cytochrome c . Inhibits the proteolytic activity of AFG3L2, stimulating respiration and stabilizing respiratory enzymes in actively respiring mitochondria .

APPLICATION

To ensure optimal assay performance, AREX recommends conducting reagent titration tailored to each testing system for optimal detection results.

WB	1:500 - 1:1000
----	----------------

*Results are sample-specific. Please refer to your local assay conditions and test parameters for reference.

PRODUCT OVERVIEW

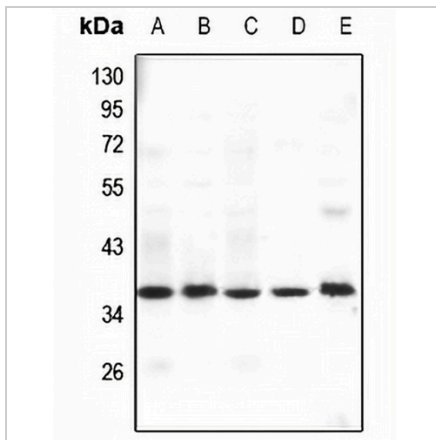
Description	Rabbit polyclonal antibody to GHITM
Specificity	Recognizes endogenous levels of GHITM protein.
Antibody Type	Primary antibody
Immunogen	KLH-conjugated synthetic peptide encompassing a sequence within the center region of human GHITM. The exact sequence is proprietary.
Purification	The antibody was purified by immunogen affinity chromatography.
Molecular Weight	Predicted: 37 kD; Observed: 37 kD
Form/Buffer	Liquid in 0.42% Potassium phosphate, 0.87% Sodium chloride, pH 7.3, 30% glycerol, and 0.01% sodium azide.
Alternative Names	DERP2; MICS1; TMBIM5; Growth hormone-inducible transmembrane protein; Dermal papilla-derived protein 2; Mitochondrial morphology and cristae structure 1; MICS1; Transmembrane BAX inhibitor motif-containing protein 5
Gene Symbol	GHITM
Entrez Gene	27069(Human)
SwissProt	Q9H3K2(Human)

*AREX continuously optimizes our products. Webpage content may not reflect the latest updates. For inquiries, please contact info@arexbio.com or your local distributor.

*Clone Number, Reactivity, Source/Host and Clonality can be found in the product name and Key Features section above.

DATASHEET**GHITM Rabbit Polyclonal Antibody**

CAT. NO. APA10217

DATA

Western blot analysis of GHITM expression in SGC7901 (A), HCT116 (B), HepG2 (C), H9C2 (D), AML12 (E) whole cell lysates. (Predicted band size: 37 kD; Observed band size: 37 kD)

STORAGE

Store at 4°C short term. For long term storage, store at -20°C, avoiding freeze/thaw cycles.

NOTE

For Research Use Only. Not for diagnostic, therapeutics, prophylactic or in vivo use.