

**DATASHEET**

**RSAD1 Rabbit Polyclonal Antibody**

CAT. NO. APA10229

**KEY FEATURES**

Target	RSAD1	Source / Host	Rabbit
Reactivity	Human, Mouse, Rat, Bovine	Clonality	Polyclonal
Applications	WB, IHC	Conjugation	Unconjugated
Form / Buffer	Liquid in 0.42% Potassium phosphate, 0.87% Sodium chloride, pH 7.3, 30% glycerol, and 0.01% sodium azide.		Storage at-20°C

**BACKGROUND**

May be a heme chaperone, appears to bind heme. Homologous bacterial proteins do not have oxygen-independent coproporphyrinogen-III oxidase activity (Probable). Binds 1 [4Fe-4S] cluster. The cluster is coordinated with 3 cysteines and an exchangeable S-adenosyl-L-methionine .

**APPLICATION**

To ensure optimal assay performance, AREX recommends conducting reagent titration tailored to each testing system for optimal detection results.

WB	1:500 - 1:1000
IHC	1:50 - 1:100

\*Results are sample-specific. Please refer to your local assay conditions and test parameters for reference.

**PRODUCT OVERVIEW**

Description	Rabbit polyclonal antibody to RSAD1
Specificity	Recognizes endogenous levels of RSAD1 protein.
Antibody Type	Primary antibody
Immunogen	KLH-conjugated synthetic peptide encompassing a sequence within the center region of human RSAD1. The exact sequence is proprietary.
Purification	The antibody was purified by immunogen affinity chromatography.
Molecular Weight	Predicted: 48 kD; Observed: 52 kD
Form/Buffer	Liquid in 0.42% Potassium phosphate, 0.87% Sodium chloride, pH 7.3, 30% glycerol, and 0.01% sodium azide.
Alternative Names	Radical S-adenosyl methionine domain-containing protein 1 mitochondrial; Oxygen-independent coproporphyrinogen-III oxidase-like protein RSAD1
Gene Symbol	RSAD1
Entrez Gene	55316(Human); 237926(Mouse)
SwissProt	Q9HA92(Human); Q5SUV1(Mouse)

\*AREX continuously optimizes our products. Webpage content may not reflect the latest updates. For inquiries, please contact [info@arexbio.com](mailto:info@arexbio.com) or your local distributor.

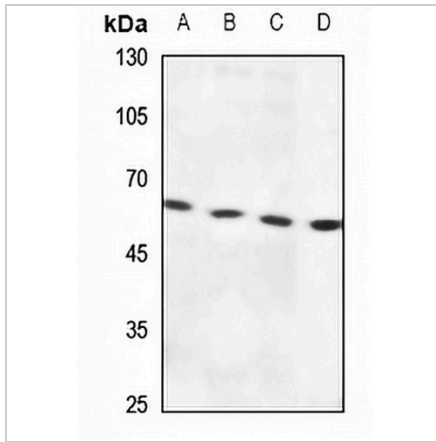
\*Clone Number, Reactivity, Source/Host and Clonality can be found in the product name and Key Features section above.

**DATASHEET**

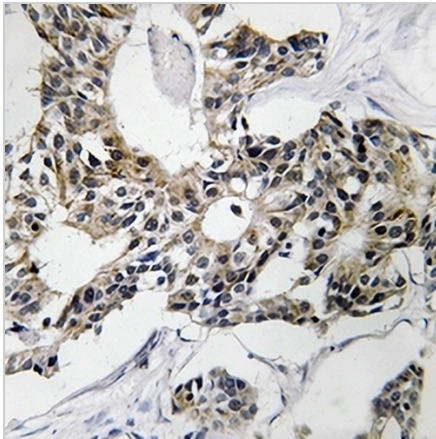
**RSAD1 Rabbit Polyclonal Antibody**

CAT. NO. APA10229

**DATA**



Western blot analysis of RSAD1 expression in HEK293T (A), HeLa (B), H1688 (C), rat liver (D) whole cell lysates. (Predicted band size: 48 kD; Observed band size: 52 kD)



Immunohistochemical analysis of RSAD1 staining in human breast cancer formalin fixed paraffin embedded tissue section. The section was pre-treated using heat mediated antigen retrieval with sodium citrate buffer (pH 6.0). The section was then incubated with the antibody at room temperature and detected using an HRP conjugated compact polymer system. DAB was used as the chromogen. The section was then counterstained with haematoxylin and mounted with DPX.

**STORAGE**

Store at 4°C short term. For long term storage, store at -20°C, avoiding freeze/thaw cycles.

**NOTE**

For Research Use Only. Not for diagnostic, therapeutics, prophylactic or in vivo use.