

DATASHEET

RhoG Rabbit Polyclonal Antibody

CAT. NO. APA10232

KEY FEATURES

Target	RhoG	Source / Host	Rabbit
Reactivity	Human, Mouse, Rat	Clonality	Polyclonal
Applications	WB, IHC	Conjugation	Unconjugated
Form / Buffer	Liquid in 0.42% Potassium phosphate, 0.87% Sodium chloride, pH 7.3, 30% glycerol, and 0.01% sodium azide.		Storage at -20°C

BACKGROUND

Plays a role in immunological synaptic F-actin density and architecture organization . Regulates actin reorganization in lymphocytes, possibly through the modulation of Rac1 activity . Required for the formation of membrane ruffles during macropinocytosis . Plays a role in cell migration and is required for the formation of cup-like structures during trans-endothelial migration of leukocytes . Binds phospholipids in an activation-dependent manner; thereby acting as an anchor for other proteins to the plasma membrane (PM) . Plays a role in exocytosis of cytotoxic granules (CG) by lymphocytes/Component of the exocytosis machinery in natural killer (NK) and CD8+ T cells . Promotes the docking of cytotoxic granules (CG) to the plasma membrane through the interaction with UNC13D .

APPLICATION

To ensure optimal assay performance, AREX recommends conducting reagent titration tailored to each testing system for optimal detection results.

WB	1:500 - 1:1000
IHC	1:50 - 1:100

*Results are sample-specific. Please refer to your local assay conditions and test parameters for reference.

PRODUCT OVERVIEW

Description	Rabbit polyclonal antibody to RhoG
Specificity	Recognizes endogenous levels of RhoG protein.
Antibody Type	Primary antibody
Immunogen	KLH-conjugated synthetic peptide encompassing a sequence within the center region of human RhoG. The exact sequence is proprietary.
Purification	The antibody was purified by immunogen affinity chromatography.
Molecular Weight	Predicted: 21 kD; Observed: 21 kD
Form/Buffer	Liquid in 0.42% Potassium phosphate, 0.87% Sodium chloride, pH 7.3, 30% glycerol, and 0.01% sodium azide.
Alternative Names	ARHG; Rho-related GTP-binding protein RhoG
Gene Symbol	RHOG
Entrez Gene	391(Human); 56212(Mouse)
SwissProt	P84095(Human); P84096(Mouse)

*AREX continuously optimizes our products. Webpage content may not reflect the latest updates. For inquiries, please contact info@arexbio.com or your local distributor.

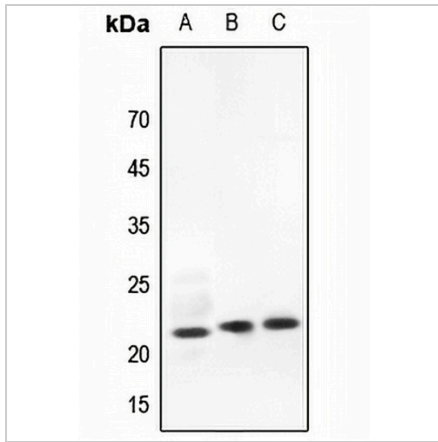
*Clone Number, Reactivity, Source/Host and Clonality can be found in the product name and Key Features section above.

DATASHEET

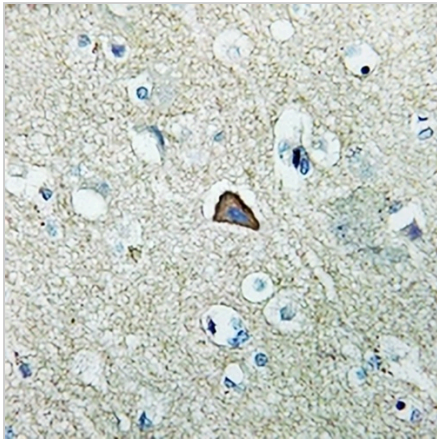
RhoG Rabbit Polyclonal Antibody

CAT. NO. APA10232

DATA



Western blot analysis of RhoG expression in mouse spleen (A), rat spleen (B), rat lung (C) whole cell lysates. (Predicted band size: 21 kD; Observed band size: 21 kD)



Immunohistochemical analysis of RhoG staining in human brain formalin fixed paraffin embedded tissue section. The section was pre-treated using heat mediated antigen retrieval with sodium citrate buffer (pH 6.0). The section was then incubated with the antibody at room temperature and detected using an HRP conjugated compact polymer system. DAB was used as the chromogen. The section was then counterstained with haematoxylin and mounted with DPX.

STORAGE

Store at 4°C short term. For long term storage, store at -20°C, avoiding freeze/thaw cycles.

NOTE

For Research Use Only. Not for diagnostic, therapeutics, prophylactic or in vivo use.