

DATASHEET

ECI1 Rabbit Polyclonal Antibody

CAT. NO. APA10247

KEY FEATURES

Target	ECI1	Source / Host	Rabbit
Reactivity	Human, Mouse, Rat	Clonality	Polyclonal
Applications	WB, IHC	Conjugation	Unconjugated
Form / Buffer	Liquid in 0.42% Potassium phosphate, 0.87% Sodium chloride, pH 7.3, 30% glycerol, and 0.01% sodium azide.		Storage at-20°C

BACKGROUND

Key enzyme of fatty acid beta-oxidation (Probable). Able to isomerize both 3-cis (3Z) and 3-trans (3E) double bonds into the 2-trans (2E) form in a range of enoyl-CoA species, with a preference for (3Z)-enoyl-CoAs over (3E)-enoyl-CoAs . Able to isomerize both 3-cis (3Z) and 3-trans (3E) double bonds into the 2-trans (2E) form in a range of enoyl-CoA species, with a preference for (3Z)-enoyl-CoAs over (3E)-enoyl-CoAs . The catalytic efficiency of this enzyme is not affected by the fatty acyl chain length .

APPLICATION

To ensure optimal assay performance, AREX recommends conducting reagent titration tailored to each testing system for optimal detection results.

WB	1:500 - 1:1000
IHC	1:50 - 1:100

*Results are sample-specific. Please refer to your local assay conditions and test parameters for reference.

PRODUCT OVERVIEW

Description	Rabbit polyclonal antibody to ECI1
Specificity	Recognizes endogenous levels of ECI1 protein.
Antibody Type	Primary antibody
Immunogen	KLH-conjugated synthetic peptide encompassing a sequence within the C-term region of human ECI1. The exact sequence is proprietary.
Purification	The antibody was purified by immunogen affinity chromatography.
Molecular Weight	Predicted: 32 kD; Observed: 32 kD
Form/Buffer	Liquid in 0.42% Potassium phosphate, 0.87% Sodium chloride, pH 7.3, 30% glycerol, and 0.01% sodium azide.
Alternative Names	DCI; Enoyl-CoA delta isomerase 1 mitochondrial; 3,2-trans-enoyl-CoA isomerase; Delta(3),Delta(2)-enoyl-CoA isomerase; D3,D2-enoyl-CoA isomerase; Dodecenoyl-CoA isomerase
Gene Symbol	ECI1
Entrez Gene	1632(Human)
SwissProt	P42126(Human)

*AREX continuously optimizes our products. Webpage content may not reflect the latest updates. For inquiries, please contact info@arexbio.com or your local distributor.

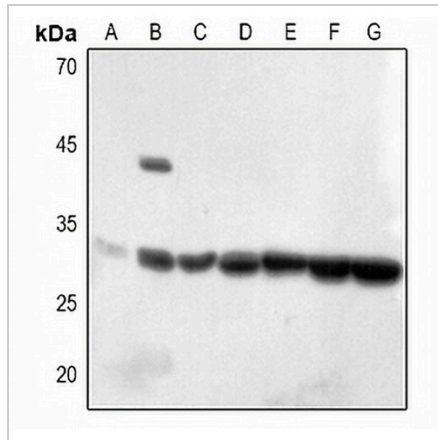
*Clone Number, Reactivity, Source/Host and Clonality can be found in the product name and Key Features section above.

DATASHEET

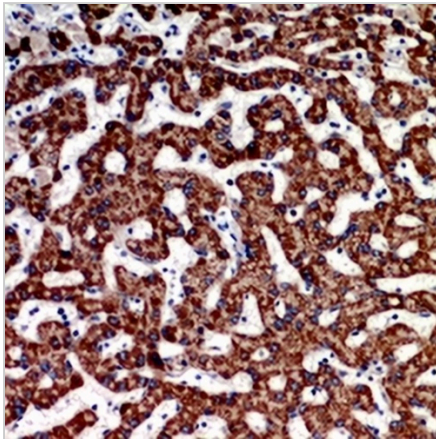
ECI1 Rabbit Polyclonal Antibody

CAT. NO. APA10247

DATA



Western blot analysis of ECI1 expression in HEK293T (A), HeLa (B), A2780 (C), mouse liver (D), mouse kidney (E), rat liver (F), rat kidney (G) whole cell lysates. (Predicted band size: 32 kD; Observed band size: 32 kD)



Immunohistochemical analysis of ECI1 staining in human liver formalin fixed paraffin embedded tissue section. The section was pre-treated using heat mediated antigen retrieval with sodium citrate buffer (pH 6.0). The section was then incubated with the antibody at room temperature and detected using an HRP conjugated compact polymer system. DAB was used as the chromogen. The section was then counterstained with haematoxylin and mounted with DPX.

STORAGE

Store at 4°C short term. For long term storage, store at -20°C, avoiding freeze/thaw cycles.

NOTE

For Research Use Only. Not for diagnostic, therapeutics, prophylactic or in vivo use.