

DATASHEET

CD300d Rabbit Polyclonal Antibody

CAT. NO. APA10255

KEY FEATURES

Target	CD300d	Source / Host	Rabbit
Reactivity	Human, Mouse, Rat	Clonality	Polyclonal
Applications	WB, IHC	Conjugation	Unconjugated
Form / Buffer	Liquid in 0.42% Potassium phosphate, 0.87% Sodium chloride, pH 7.3, 30% glycerol, and 0.01% sodium azide.		Storage at -20°C

BACKGROUND

CMRF35-like molecule 5 (CD300LD), also known as CD300 antigen-like family member D, CMRF35-A4. Belongs to the CD300 family Subunit: Forms complexes with the CD300 family members with exception of CD300c Subcellular location: Cell membrane Tissue specificity: Expression seems restricted to cells of myeloid lineage PTM: N-glycosylated

APPLICATION

To ensure optimal assay performance, AREX recommends conducting reagent titration tailored to each testing system for optimal detection results.

WB	1:500 - 1:1000
IHC	1:50 - 1:100

*Results are sample-specific. Please refer to your local assay conditions and test parameters for reference.

PRODUCT OVERVIEW

Description	Rabbit polyclonal antibody to CD300d
Specificity	Recognizes endogenous levels of CD300d protein.
Antibody Type	Primary antibody
Immunogen	KLH-conjugated synthetic peptide encompassing a sequence within the center region of human CD300d. The exact sequence is proprietary.
Purification	The antibody was purified by immunogen affinity chromatography.
Molecular Weight	Predicted: 21 kD; Observed: 40-43 kD
Form/Buffer	Liquid in 0.42% Potassium phosphate, 0.87% Sodium chloride, pH 7.3, 30% glycerol, and 0.01% sodium azide.
Alternative Names	CD300D; CMRF35A4; CMRF35-like molecule 4; CLM-4; CD300 antigen-like family member D; CMRF35-A4; CD300d
Gene Symbol	CD300LD
Entrez Gene	100131439(Human)
SwissProt	Q6UXZ3(Human)

*AREX continuously optimizes our products. Webpage content may not reflect the latest updates. For inquiries, please contact info@arexbio.com or your local distributor.

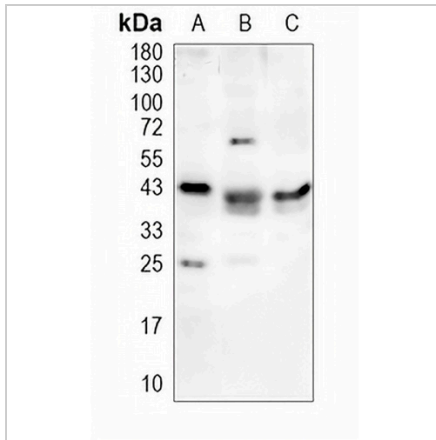
*Clone Number, Reactivity, Source/Host and Clonality can be found in the product name and Key Features section above.

DATASHEET

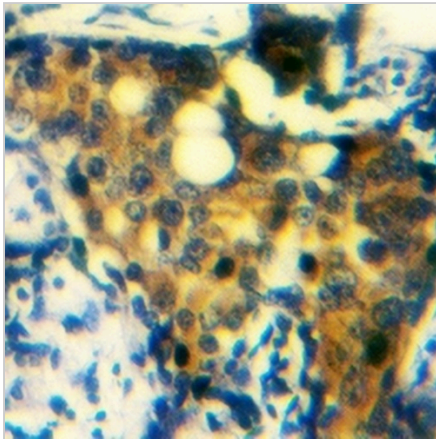
CD300d Rabbit Polyclonal Antibody

CAT. NO. APA10255

DATA



Western blot analysis of CD300d expression in MG63 (A), mouse muscle (B), rat muscle (C) whole cell lysates. (Predicted band size: 21 kD; Observed band size: 40-43 kD)



Immunohistochemical analysis of CD300d staining in human breast cancer formalin fixed paraffin embedded tissue section. The section was pre-treated using heat mediated antigen retrieval with sodium citrate buffer (pH 6.0). The section was then incubated with the antibody at room temperature and detected using an HRP conjugated compact polymer system. DAB was used as the chromogen. The section was then counterstained with haematoxylin and mounted with DPX.

STORAGE

Store at 4°C short term. For long term storage, store at -20°C, avoiding freeze/thaw cycles.

NOTE

For Research Use Only. Not for diagnostic, therapeutics, prophylactic or in vivo use.