

**DATASHEET**

**CD104 (Phospho-Y1510) Rabbit Polyclonal Antibody**

CAT. NO. APA10262

**KEY FEATURES**

Target	CD104 (Phospho-Y1510)	Source / Host	Rabbit
Reactivity	Human, Mouse, Rat	Clonality	Polyclonal
Applications	WB, IHC	Conjugation	Unconjugated
Form / Buffer	Liquid in 0.42% Potassium phosphate, 0.87% Sodium chloride, pH 7.3, 30% glycerol, and 0.01% sodium azide.	Storage	at-20°C

**BACKGROUND**

Integrin alpha-6/beta-4 is a receptor for laminin. Plays a critical structural role in the hemidesmosome of epithelial cells. Is required for the regulation of keratinocyte polarity and motility. ITGA6:ITGB4 binds to NRG1 (via EGF domain) and this binding is essential for NRG1-ERBB signaling and this binding is essential for NRG1-ERBB signaling . ITGA6:ITGB4 binds to IGF1 and this binding is essential for IGF1 signaling . ITGA6:ITGB4 binds to IGF2 and this binding is essential for IGF2 signaling .

**APPLICATION**

To ensure optimal assay performance, AREX recommends conducting reagent titration tailored to each testing system for optimal detection results.

WB	1:500 - 1:1000
IHC	1:100 - 1:200

\*Results are sample-specific. Please refer to your local assay conditions and test parameters for reference.

**PRODUCT OVERVIEW**

Description	Rabbit polyclonal antibody to CD104 (Phospho-Y1510)
Specificity	Recognizes endogenous levels of CD104 protein only when phosphorylated at Y1510.
Antibody Type	Primary antibody
Immunogen	KLH-conjugated synthetic phosphopeptide corresponding to residues surrounding Y1510 of human CD104 protein. The exact sequence is proprietary.
Purification	The antibody was purified by immunogen affinity chromatography.
Molecular Weight	Predicted: 202 kD; Observed: 202 kD
Form/Buffer	Liquid in 0.42% Potassium phosphate, 0.87% Sodium chloride, pH 7.3, 30% glycerol, and 0.01% sodium azide.
Alternative Names	Integrin beta-4; GP150; CD104
Gene Symbol	ITGB4
Entrez Gene	3691(Human); 192897(Mouse); 25724(Rat)
SwissProt	P16144(Human); A2A863(Mouse); Q64632(Rat)

\*AREX continuously optimizes our products. Webpage content may not reflect the latest updates. For inquiries, please contact [info@arexbio.com](mailto:info@arexbio.com) or your local distributor.

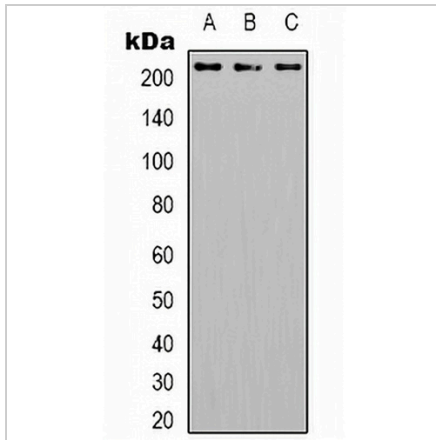
\*Clone Number, Reactivity, Source/Host and Clonality can be found in the product name and Key Features section above.

**DATASHEET**

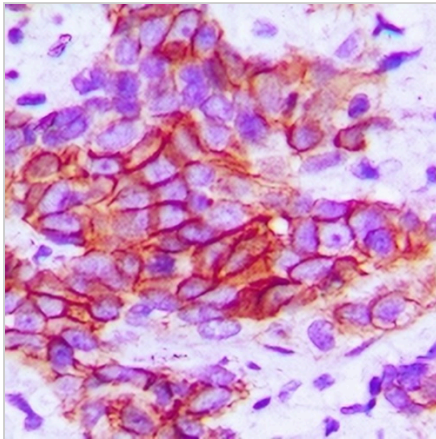
**CD104 (Phospho-Y1510) Rabbit Polyclonal Antibody**

CAT. NO. APA10262

**DATA**



Western blot analysis of CD104 (Phospho-Y1510) expression in HepG2 (A), SW480 (B), A431 (C) whole cell lysates. (Predicted band size: 202 kD; Observed band size: 202 kD)



Immunohistochemical analysis of CD104 (Phospho-Y1510) staining in human breast cancer formalin fixed paraffin embedded tissue section. The section was pre-treated using heat mediated antigen retrieval with sodium citrate buffer (pH 6.0). The section was then incubated with the antibody at room temperature and detected using an HRP conjugated compact polymer system. DAB was used as the chromogen. The section was then counterstained with haematoxylin and mounted with DPX.

**STORAGE**

Store at 4°C short term. For long term storage, store at -20°C, avoiding freeze/thaw cycles.

**NOTE**

For Research Use Only. Not for diagnostic, therapeutics, prophylactic or in vivo use.