

**DATASHEET**

**p300 (Acetyl-K1542) Rabbit Polyclonal Antibody**

CAT. NO. APA10288

**KEY FEATURES**

Target	p300 (Acetyl-K1542)	Source / Host	Rabbit
Reactivity	Human, Mouse	Clonality	Polyclonal
Applications	WB	Conjugation	Unconjugated
Form / Buffer	Liquid in 0.42% Potassium phosphate, 0.87% Sodium chloride, pH 7.3, 30% glycerol, and 0.01% sodium azide.		Storage at -20°C

**BACKGROUND**

Functions as a histone acetyltransferase and regulates transcription via chromatin remodeling . Acetylates all four core histones in nucleosomes . Histone acetylation gives an epigenetic tag for transcriptional activation . Mediates acetylation of histone H3 at 'Lys-122' (H3K122ac), a modification that localizes at the surface of the histone octamer and stimulates transcription, possibly by promoting nucleosome instability . Mediates acetylation of histone H3 at 'Lys-18' and 'Lys-27' (H3K18ac and H3K27ac, respectively) . Also able to acetylate histone lysine residues that are already monomethylated on the same side chain to form N6-acetyl-N6-methyllysine (Kacme), an epigenetic mark of active chromatin associated with increased transcriptional initiation .

**APPLICATION**

To ensure optimal assay performance, AREX recommends conducting reagent titration tailored to each testing system for optimal detection results.

WB	1:500 - 1:1000
----	----------------

\*Results are sample-specific. Please refer to your local assay conditions and test parameters for reference.

**PRODUCT OVERVIEW**

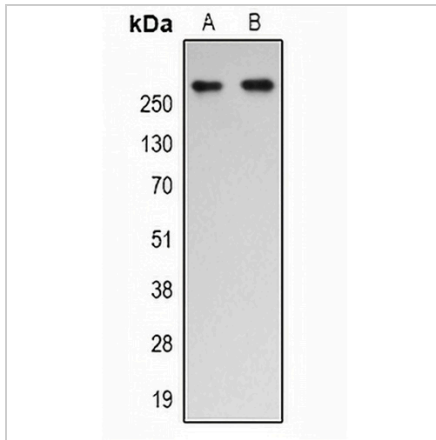
Description	Rabbit polyclonal antibody to p300 (Acetyl-K1542)
Specificity	Recognizes endogenous levels of p300 protein only when acetylated at K1542.
Antibody Type	Primary antibody
Immunogen	KLH-conjugated synthetic acetylated peptide corresponding to residues surrounding K1542 of human p300 protein. The exact sequence is proprietary.
Purification	The antibody was purified by immunogen affinity chromatography.
Molecular Weight	Predicted: 264 kD; Observed: 264 kD
Form/Buffer	Liquid in 0.42% Potassium phosphate, 0.87% Sodium chloride, pH 7.3, 30% glycerol, and 0.01% sodium azide.
Alternative Names	P300; Histone acetyltransferase p300; p300 HAT; E1A-associated protein p300
Gene Symbol	EP300
Entrez Gene	2033(Human); 328572(Mouse)
SwissProt	Q09472(Human); B2RWS6(Mouse)

\*AREX continuously optimizes our products. Webpage content may not reflect the latest updates. For inquiries, please contact [info@arexbio.com](mailto:info@arexbio.com) or your local distributor.

\*Clone Number, Reactivity, Source/Host and Clonality can be found in the product name and Key Features section above.

**DATASHEET****p300 (Acetyl-K1542) Rabbit Polyclonal Antibody**

CAT. NO. APA10288

**DATA**

Western blot analysis of p300 (Acetyl-K1542) expression in Jurkat (A), HeLa (B) whole cell lysates. (Predicted band size: 264 kD; Observed band size: 264 kD)

**STORAGE**

Store at 4°C short term. For long term storage, store at -20°C, avoiding freeze/thaw cycles.

**NOTE**

For Research Use Only. Not for diagnostic, therapeutics, prophylactic or in vivo use.