

DATASHEET

Tensin 2 (Phospho-Y483) Rabbit Polyclonal Antibody

CAT. NO. APA10293

KEY FEATURES

Target	Tensin 2 (Phospho-Y483)	Source / Host	Rabbit
Reactivity	Human, Mouse	Clonality	Polyclonal
Applications	WB	Conjugation	Unconjugated
Form / Buffer	Liquid in 0.42% Potassium phosphate, 0.87% Sodium chloride, pH 7.3, 30% glycerol, and 0.01% sodium azide.	Storage	at-20°C

BACKGROUND

Tyrosine-protein phosphatase which regulates cell motility, proliferation and muscle-response to insulin . Phosphatase activity is mediated by binding to phosphatidylinositol-3,4,5-triphosphate (PtdIns(3,4,5)P3) via the SH2 domain . In muscles and under catabolic conditions, dephosphorylates IRS1 leading to its degradation and muscle atrophy . Negatively regulates PI3K-AKT pathway activation . Dephosphorylates nephrin NPHS1 in podocytes which regulates activity of the mTORC1 complex .

APPLICATION

To ensure optimal assay performance, AREX recommends conducting reagent titration tailored to each testing system for optimal detection results.

WB	1:500 - 1:1000
----	----------------

*Results are sample-specific. Please refer to your local assay conditions and test parameters for reference.

PRODUCT OVERVIEW

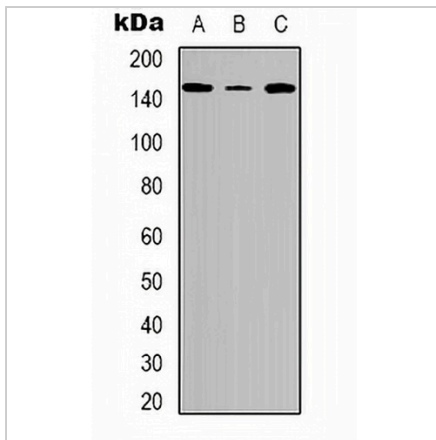
Description	Rabbit polyclonal antibody to Tensin 2 (Phospho-Y483)
Specificity	Recognizes endogenous levels of Tensin 2 protein only when phosphorylated at Y483.
Antibody Type	Primary antibody
Immunogen	KLH-conjugated synthetic phosphopeptide corresponding to residues surrounding Y483 of human Tensin 2 protein. The exact sequence is proprietary.
Purification	The antibody was purified by immunogen affinity chromatography.
Molecular Weight	Predicted: 152 kD; Observed: 152 kD
Form/Buffer	Liquid in 0.42% Potassium phosphate, 0.87% Sodium chloride, pH 7.3, 30% glycerol, and 0.01% sodium azide.
Alternative Names	KIAA1075; TNS2; Tensin-like C1 domain-containing phosphatase; C1 domain-containing phosphatase and tensin homolog; C1-TEN; Tensin-2
Gene Symbol	TENC1
Entrez Gene	23371(Human); 209039(Mouse)
SwissProt	Q63HR2(Human); Q8CGB6(Mouse)

*AREX continuously optimizes our products. Webpage content may not reflect the latest updates. For inquiries, please contact info@arexbio.com or your local distributor.

*Clone Number, Reactivity, Source/Host and Clonality can be found in the product name and Key Features section above.

DATASHEET**Tensin 2 (Phospho-Y483) Rabbit Polyclonal Antibody**

CAT. NO. APA10293

DATA

Western blot analysis of Tensin 2 (Phospho-Y483) expression in A549 (A), HeLa (B), NIH3T3 (C) whole cell lysates. (Predicted band size: 152 kD; Observed band size: 152 kD)

STORAGE

Store at 4°C short term. For long term storage, store at -20°C, avoiding freeze/thaw cycles.

NOTE

For Research Use Only. Not for diagnostic, therapeutics, prophylactic or in vivo use.