

DATASHEET

ALT2 Rabbit Polyclonal Antibody

CAT. NO. APA10304

KEY FEATURES

Target	ALT2	Source / Host	Rabbit
Reactivity	Human	Clonality	Polyclonal
Applications	WB	Conjugation	Unconjugated
Form / Buffer	Liquid in 0.42% Potassium phosphate, 0.87% Sodium chloride, pH 7.3, 30% glycerol, and 0.01% sodium azide.		Storage at -20°C

BACKGROUND

Catalyzes the reversible transamination between alanine and 2-oxoglutarate to form pyruvate and glutamate.

APPLICATION

To ensure optimal assay performance, AREX recommends conducting reagent titration tailored to each testing system for optimal detection results.

WB	1:500 - 1:1000
----	----------------

*Results are sample-specific. Please refer to your local assay conditions and test parameters for reference.

PRODUCT OVERVIEW

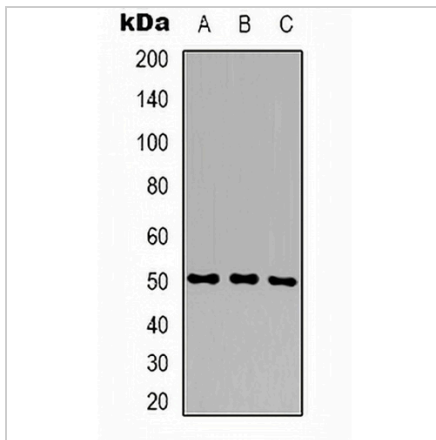
Description	Rabbit polyclonal antibody to ALT2
Specificity	Recognizes endogenous levels of ALT2 protein.
Antibody Type	Primary antibody
Immunogen	KLH-conjugated synthetic peptide encompassing a sequence within the center region of human ALT2. The exact sequence is proprietary.
Purification	The antibody was purified by immunogen affinity chromatography.
Molecular Weight	Predicted: 57 kD; Observed: 50 kD
Form/Buffer	Liquid in 0.42% Potassium phosphate, 0.87% Sodium chloride, pH 7.3, 30% glycerol, and 0.01% sodium azide.
Alternative Names	AAT2; ALT2; Alanine aminotransferase 2; ALT2; Glutamate pyruvate transaminase 2; GPT 2; Glutamic--alanine transaminase 2; Glutamic--pyruvic transaminase 2
Gene Symbol	GPT2
Entrez Gene	84706(Human)
SwissProt	Q8TD30(Human)

*AREX continuously optimizes our products. Webpage content may not reflect the latest updates. For inquiries, please contact info@arexbio.com or your local distributor.

*Clone Number, Reactivity, Source/Host and Clonality can be found in the product name and Key Features section above.

DATASHEET**ALT2 Rabbit Polyclonal Antibody**

CAT. NO. APA10304

DATA

Western blot analysis of ALT2 expression in SHSY5Y (A), HepG2 (B), HEK293T (C) whole cell lysates. (Predicted band size: 57 kD; Observed band size: 50 kD)

STORAGE

Store at 4°C short term. For long term storage, store at -20°C, avoiding freeze/thaw cycles.

NOTE

For Research Use Only. Not for diagnostic, therapeutics, prophylactic or in vivo use.